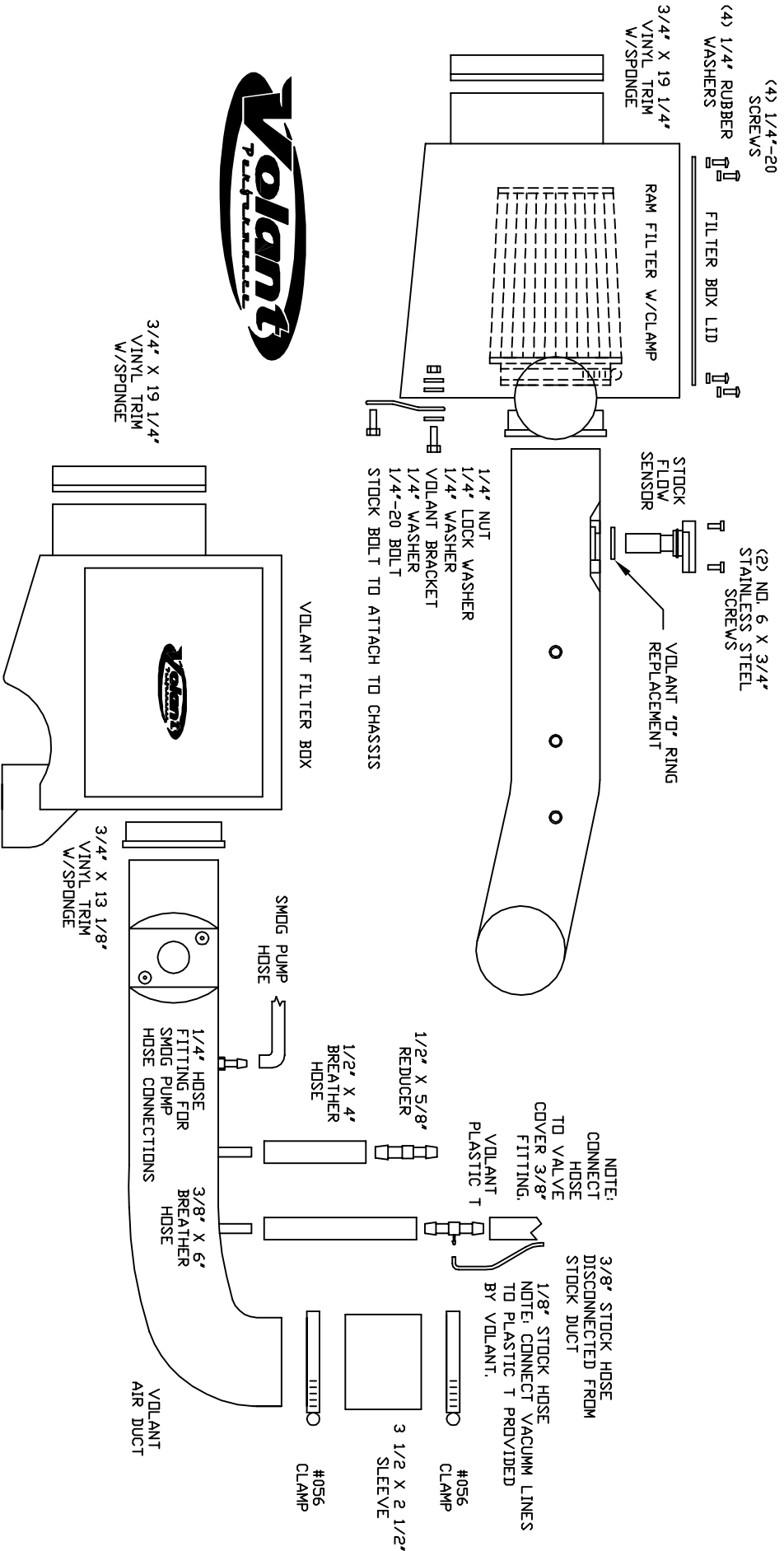


VOLANT COOL AIR INTAKES
 PART NO.: 18847
 INSTALLATION INSTRUCTIONS
 WWW.VOLANT.COM
 TECH SUPPORT: (909) 481-3888

18847 PARTS LIST		1	1/2" X 5/8" REDUCER FITTING
1	VOLANT FILTER BOX	2	1/4" HOSE FITTING
1	VOLANT FILTER BOX LID	1	1/2" X 4" BREATHER HOSE
1	VOLANT AIR FLOW DUCT	1	3/8" X 6" BREATHER HOSE
1	RAM FILTER W/CLAMP	4	3/4" X 19 1/4" VINYL TRIM
1	3 1/2" X 2 1/2" SLEEVE	4	3/4" X 13 1/8" VINYL TRIM
2	#056 CLAMP	2	VOLANT BRACKET
1	1/4"-20 BOLT	1	VOLANT "D" RING REPLACEMENT





Volant Performance
 Rancho Cucamonga, CA 91730
 (909) 481-3888 Tech Support
 (909) 476-1491 Fax
 www.volant.com

READ INSTRUCTIONS THOROUGHLY BEFORE DISASSEMBLING. DO NOT SKIP ANY STEPS. ANY QUESTIONS ON A VOLANT KIT MAY BE REFERRED TO OUR TECH SUPPORT LINE AT (909) 481-3888 OR VISIT OUR WEBSITE AT WWW.VOLANT.COM

INSTALLATION INSTRUCTIONS PART NO. 18847

Installation Instructions:

1. Disconnect the negative battery cable.
2. Remove the throttle body cover.
3. Loosen the clamp holding the duct to the throttle body.
4. Remove the breather hoses from the back of the air duct, if your duct has a 1/2 rubber plug this will also need to be removed.
5. Remove the factory MAF sensor.
6. Remove the bolts holding the factory airbox into place.
7. Remove the factory intake system.
8. Place the 19.25 trim on the volant box where the box meets the fender.
9. Place the 13.125 trim on the volant box where the air duct slides through.
10. Place the volant box into factory position and tighten down with the bracket provided.
11. Replace the factory o-ring with the supplied volant ring and attach the MAF to the volant duct.
12. Slide the Duct into the volant box and tighten the filter.
13. Attach the 3.5 sleeve to the throttle body and press the the duct into the sleeve and attach with #56 clamps
14. Attach breather hoses according to size, some models my require capping the open fitting with the cap removed in step 4.
15. Reinstall the throttle body cover and battery cable.

WARNING: OVER TIGHTENING HARDWARE MAY ALTAR THE INTEGRITY OF THE VOLANT AIR INTAKE SYSTEM.

BEFORE ROAD TESTING

1. Start engine, leaving the transmission in park and securing the parking brake.
2. Make sure to look and listen for any unusual noises or air leaks. Repair problems if needed.
3. Once completed it will be necessary to check periodically for realignment and tightening of all connections.
4. Once all tests are completed, enjoy the performance of your new Volant Air Intake System.

CARE AND CLEANING

Check the cotton reusable filter periodically and remove any excessive dirt build-up by tapping the filter on the ground and brushing off the loosened dirt. Clean the filter by using Volant's Filter Recharger Kit. Volant's Filter Recharger Kit is designed to restore original air flow. Re-oil every 10,000 miles without cleaning to improve filtering in sand and dirt. Clean only when dirt is very excessive or 50,000 miles.

RECOMMENDED SERVICE PARTS

RECOMMENDED SERVICE PARTS	PART NO.
REPLACEMENT FILTER	5113
PREFILTER	51901
CLEANING KIT	5100

APPLICATION GUIDE

MY	MAKE	MODEL	ENG.
00-04	TOYOTA	TUNDRA	4.7L
00-04	TOYOTA	SEQUOIA	4.7L

INSTALL

