



Installation Instructions

Eibach Springs, Inc. • 264 Mariah Circle • Corona, California 92879-1751 • USA • Tech Support 800-222-8811 Ext 114

Pro Truck Lift Kit – # E80-35-034-01-22

2017-19 Ford F-250/F-350 Super Duty, 4WD

Note: Installation of the Pro Truck Lift System requires extended length brake lines, stabilizer bar spacers and an extended vacuum line which are included in this kit.

Note: Installation of an adjustable track bar is required to assure centering of the front axle.

Warning: Longer brake lines must be installed. Failure to do so may cause damage to the braking system and cause a loss of control of the vehicle and may lead to death or serious injury. Do not attempt to install or drive this vehicle if any of these parts are missing.

Kit Contents	Description	Part Number	Qty
	Front Damper	E60-35-034-01-10	2
	Rear Damper	E60-35-034-01-01	2
	Front Spring	F31-35-034-01-FA	2
	Stabilizer Bar Spacer	AK31-35-034-01-FA	2
	Vacuum Line, Extended	8001311	1
	Brake Line Kit, Extended	8001312	1
	Instructions	E80-35-034-01-22INST	1

NOTES: Read All Instructions Before Beginning Installation

1. Park vehicle on level surface and set emergency brake. Raise and support the vehicle with safety stands. Refer to factory manual for proper location of safety stands.
2. Power washing your chassis will make the installation cleaner.
 - **NOTE:** Never work on or under a vehicle unless it is properly supported by safety stands.
3. Follow the manufacturers recommended procedure for removal and installation of the front and rear dampers.

Extended Brake Line Installation

1. Begin by raising the vehicle and supporting it with the proper safety equipment. **Note: Never work on or under a vehicle that is not supported by the proper safety equipment.**



Photo 1



Photo 2

2. Remove the spring clip and bolt that secures the brake line bracket to the frame as shown. (See Photos 1 & 2)



Photo 3

3. Unclip the brake line from the wheel speed sensor line as shown. (See **Photo 3**)



Photo 4



Photo 5



Photo 6

4. Remove/disconnect the vacuum line and wheel speed sensor line from the brake line bracket as shown. (See **Photos 4, 5 & 6**)

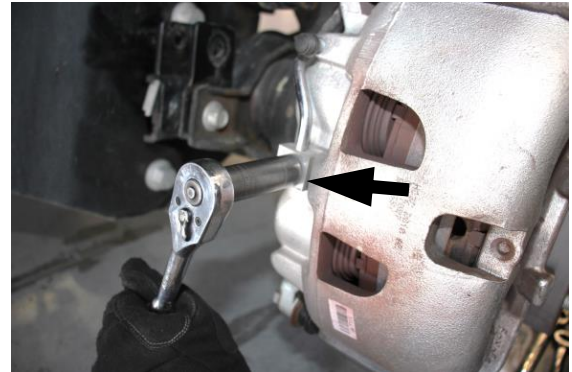


Photo 7

5. Loosen and remove the screw that secures the brake line to the caliper as shown. (See **Photo 7**)



Photo 8

6. Disconnect the brake line from the hard line as shown, then, remove the brake line. (See **Photo 8**)

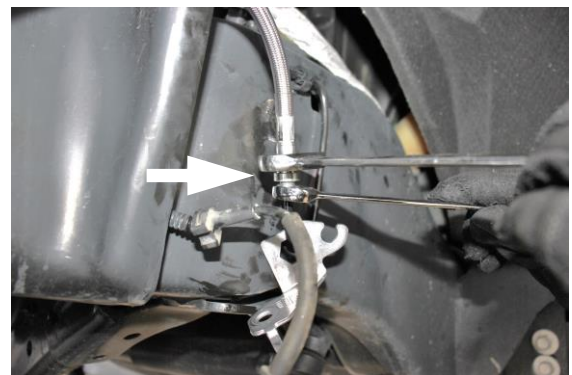


Photo 9

7. Secure the new brake line to the hard line as shown. (See **Photo 9**)

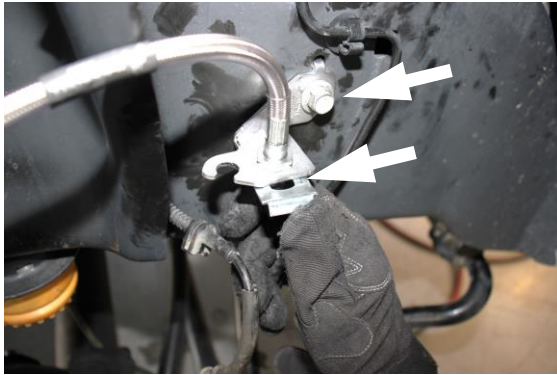


Photo 10

8. Secure the brake line bracket to the frame using the OE screw, then, secure the brake line to the bracket with the OE spring clip as shown. (See Photo 10)

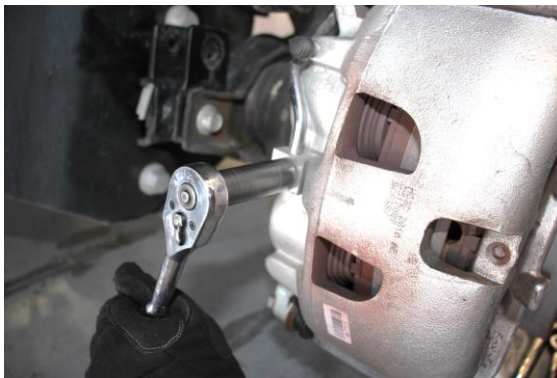


Photo 11

9. Secure the other end of the brake line to the caliper as shown. (See Photo 11)



Photo 12

10. Re-attach the vacuum line to the new bracket as shown. (See Photo 12)

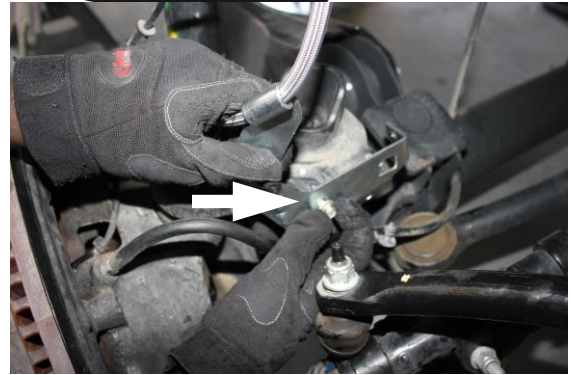


Photo 13

11. Secure the brake line bracket to the axle using the OE hardware. (See Photo 13)

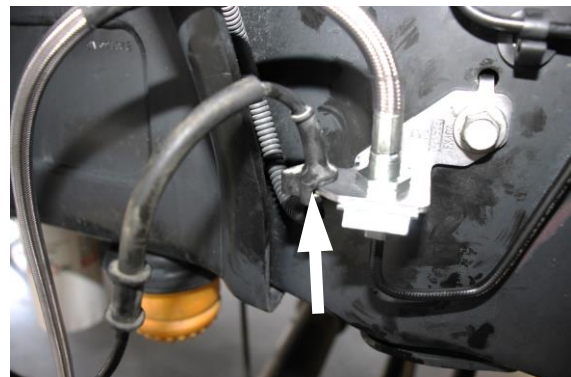


Photo 14

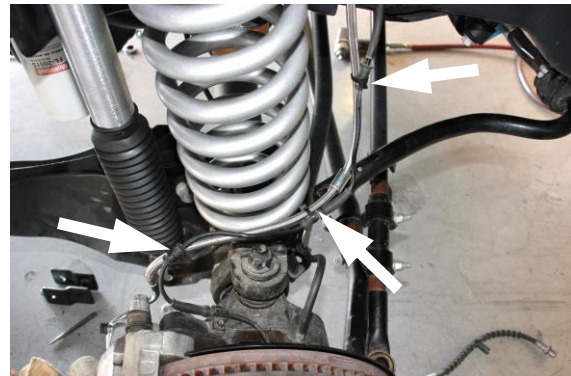


Photo 15

12. Re-attach the wheel speed sensor grommet to the bracket and use the provided zip ties to secure the brake line and wheel speed sensor line together as shown. (See Photos 14 & 15)
13. Bleed the brake lines per the factory procedure.

Stabilizer Bar Spacer Installation

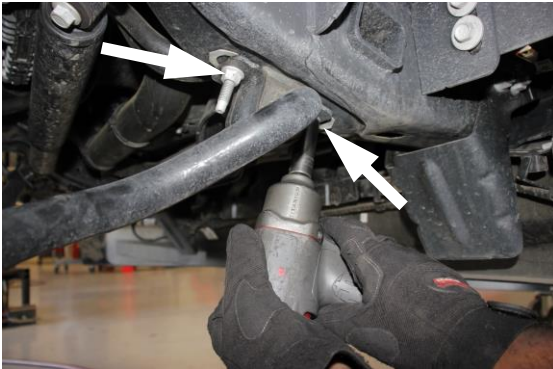


Photo 16



Photo 17

1. Loosen and remove the hardware that secures the bushing bracket to the frame, then, lower the bar downward as shown. (See **Photos 16 & 17**)



Photo 18



Photo 19

2. Install the provided spacer as shown, then, raise the bar upwards and secure it with the OE hardware. (See **Photos 18 & 19**)

Vacuum Line Installation



Photo 20



Photo 21

3. Disconnect the OE diff locker vacuum line at the upper and lower ports, then, install the new extended vacuum line in its place. (See **Photos 20 & 21**)
4. Doublecheck to make sure everything is properly tightened and positioned, then, road test the vehicle.
5. After road testing, double check all hardware to make sure everything is properly tightened and positioned.