

INSTALL INSTRUCTIONS FOR AS-1015

PART#: AS-1015

Vehicle Application

The S&B Hood Scoops are designed to fit the Wrangler JL and Gladiator Rubicon hood with vents and will be replacing the factory vents

- Mopar Hood p/n: 68281973AB
- Mopar Vent p/n: 68293749AD (Drivers Side)
- Mopar Vent p/n: 68293748AD (Passengers Side)

YEAR: 2018 - 2020

MAKE: Jeep

MODEL: Wrangler JL / 2020

Gladiator / 2020 3.0L Diesel

ENGINE: 2.0L Turbo, 3.0L Diesel, & 3.6L Gas

Tools Required

- Panel Popper
- Scissors
- Marker
- Box Cutter / Knife
- Strong Duct Tape
- Gloves
- Blanket or Towel
- T20 Torx bit and driver
- Phillips Head Screwdriver (Optional)
- Flat Head Screwdriver
- Step Stool /Step Ladder

Note: Approximate Install Time: 30 Mins.

S&B Filter Maintenance

KF-1057 Cotton Cleanable : If the enclosed filter is RED, it came pre-oiled from the factory. Click here for exact oil amount required for cleaning.

KF-1057D Dry Extendable : If the enclosed filters is WHITE, it is a disposable filter and should be discarded once it reaches capacity. This filter does not require oil.

Note: This intake kit may not fit with the following Aftermarket

Parts installed:

- Custom Hood
- Intercooler or Turbo upgrades

CARB Status

Before You Start

If at any point in the instructions it is difficult to access the scoops or hood liner. Open the hood completely until the hood rests on the cabin (place a blanket or towel in between to avoid damage). Use a step stool or ladder to reach. Also, it is optional

Related Products

- 75-5121 (2018 3.6L Jeep Wrangler/Gladiator JL Rubicon)
- 75-5129 (2018 2.0L Turbo Jeep Wrangler JL)
- Cotton Cleanable (KF-1057)



to remove the hood by removing the 4 hood bolts. See the manufacturer's instructions for removing the hood. These instructions will guide you to install the S&B Hood Scoops without needing to remove the hood

- Dry Extendable Filter (KF-1057D)
- Cleaning & Oiling Kit (88-0008)
- Filter Wrap (WF-1057)

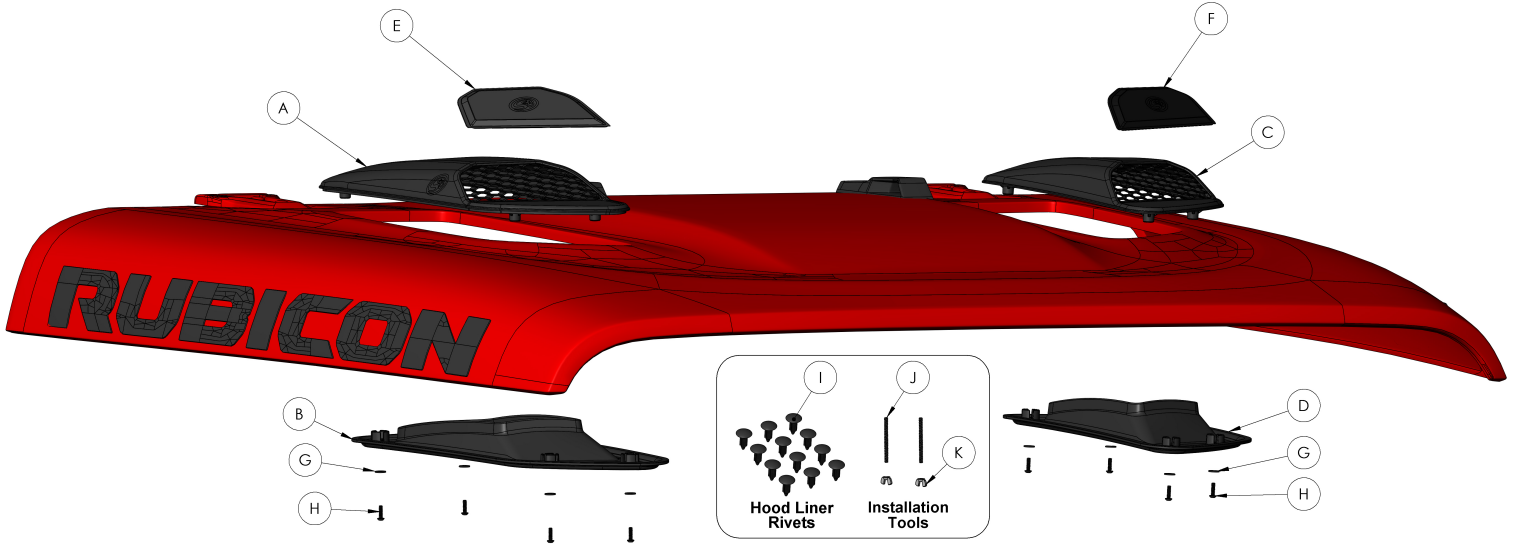
Performance Testing

- Engage parking brake and start your engine. Listen for abnormal noises. If an air leak is detected, re-inspect hoses and connections as they may need to be repositioned and tightened.
- S&B FILTERS recommends that you keep your OE intake system in the event it is required in the future.
- In order to maintain your warranty, all connections and components must be checked periodically for alignment and for proper tension on all connections. Failure to do so may void your warranty.
- Use only S&B FILTERS cleaning and oil products to service your filter. Using any other brand oil and or cleaners on your S&B air filter may void your warranty.

Warning!

If your vehicle has a Vehicle Emission Control Information decal affixed to the factory airbox, a new replacement label must be obtained and installed in a readily visible position in the engine compartment in order to remain CARB compliant. Failure to do so will prevent the vehicle from passing a smog check. Replacement labels can be ordered from your local dealership. Regulations state that the VECI label shall not be affixed to any equipment which is easily detached from the vehicle. Label placement, under the hood on a painted surface is recommended.

EXPLODED VIEW



PARTS LIST

ITEM	QTY.	DESCRIPTION	PART NUMBER
A	1	Passengers Side Hood Scoop, Top Side	Ai2220-00
B	1	Passengers Side Hood Scoop, Under Side	Ai2221-00
C	1	Drivers Side Hood Scoop, Top Side	Ai2216-00
D	1	Drivers Side Hood Scoop, Under Side	Ai2217-00
E	1	Passengers Side Scoop Plug	Ai2223-00
F	1	Drivers Side Scoop Plug	Ai2222-00
G	8	M4 Zinc Plated Washers	Ai2245-00
H	8	M4 x 14 mm Zinc Button Head Torx Screws	Ai2224-00
I	12	Hood Liner Rivets	AI1567-00
J	2	M4 x 0.7 mm x 50 mm Long Threaded Rods	AI2431-00
K	2	M4 Winged Nut	AI2474-00

TIP BEFORE STARTING

TIP 1

If at any point in the instructions it is difficult to access the scoops or hood liner. Open the hood completely until the hood rests on the cabin (place a blanket or towel in between to avoid damage). Use a step stool or ladder to reach. Also, it is optional to remove the hood by removing the 4 hood bolts. See the manufacturer's instructions for removing the hood. These instructions will guide you to install the S&B Hood Scoops without needing to remove the hood.



TIP 2



INSTALLATION STEPS

STEP 1

With the hood open, using a panel popper: remove the push-in rivets holding the hood liner/ insulation in place. There are 12 in total. A step stool will be required to reach. S&B supplies factory fit replacement hood liner rivets (P) in the kit in case any are damaged. Once all rivets have been removed set the hood liner to the side.



STEP 2

With the liner removed. Remove the factory hood bezels.



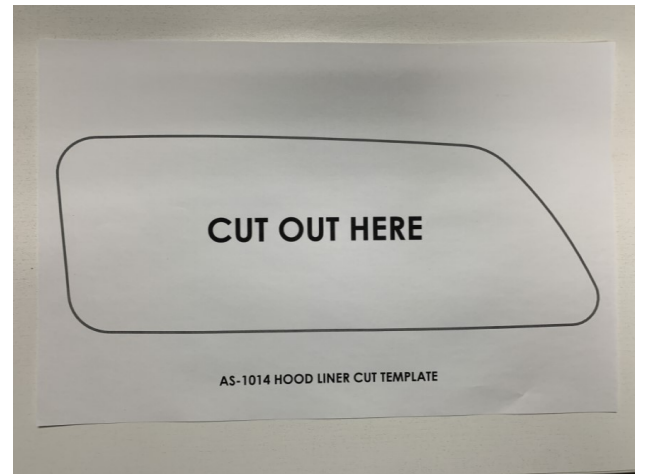
STEP 2 A

Pinch the six holding tabs inward towards the body of the bezel to release the bezels from the hood. If needed, a flat head screwdriver can be used to wedge these snap-in features.



STEP 3

Locate the printed cut template. Set the hood liner on the working surface with the silver side facing up.



STEP 3 A

With a pair of scissors cut within the line of the provided paper template.



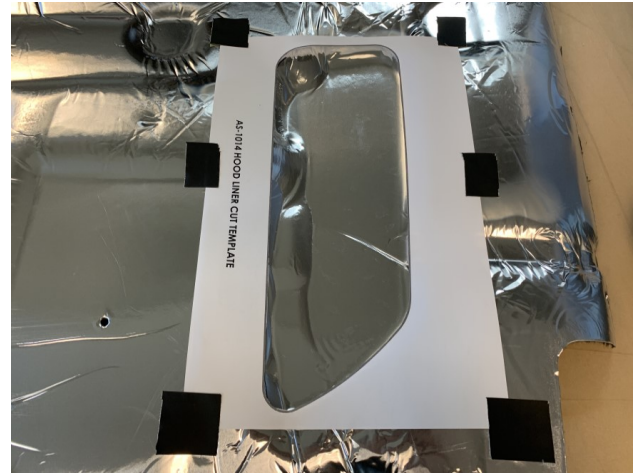
STEP 3 B

After cutting the template check with a hood scoop top side (A and C) that the cut template has sufficient clearance for the inserts



STEP 3 C

Align the template with the indentation of the factory vents on the hood liner. Tape down the template if needed



STEP 3 D

Using a marker, trace within the template onto the silver side of the hood liner. Hold down the edges of the paper template close to the surface for a better trace.



STEP 4

Remove the template from the liner if taped down. Using a blade or knife. Cut on the line of the traced pattern. For best results cut in a sawing motion to produce a clean cut. It is suggested to wear gloves when handling the exposed cut hood liner as this can irritate the skin on contact.



STEP 5

Flip over the paper template and Repeat Step 3-4 for the opposite scoop opening.



STEP 6

Insert the two provided threaded rods (Q) by hand onto one of the top sides of the hood scoops (A or C) with inserts at the topmost and bottommost insert locations at opposite corners.



STEP 7

Align one of the S&B Hood scoops tops through the hood liner. Make sure the inserts and threaded rods are unobstructed. Adjust the cut for clearance as needed



STEP 8

Remove the threaded rods by hand from the hood scoop top and insert them into the other hood scoop. repeat steps 6-7.



STEP 9

Once the cuts are done. Reattach the hood liner to the vehicle. Push in a Hood liner rivet (P) in each corner. This will make it easier to remove the liner in case adjustments need to be made.



STEP 10

Close the hood. Set down a hood scoop top (A or C) with the threaded rods installed into their matching openings on the hood. For ease of assembly on the next step tape the scoops down onto the hood firmly.



STEP 11

Open the hood with the Hood Scoop top taped down securely. Install the passenger's side hood scoop, underside (B) over the threaded rods (Q)



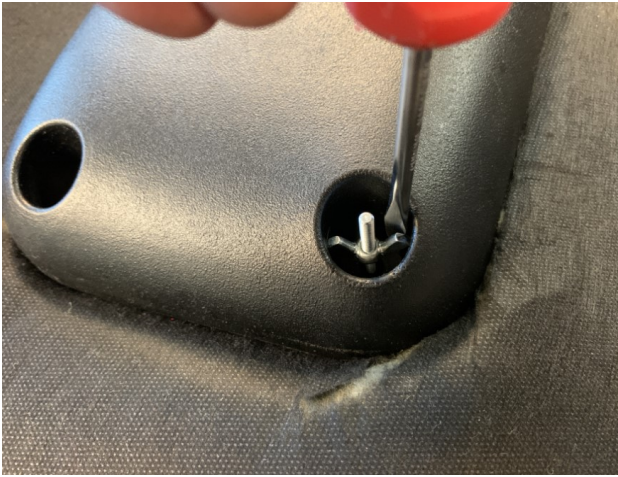
STEP 12

For easier alignment Compress the hood liner by tightening down with the provided wing nuts (R).



STEP 12 A

If access is difficult to turn the wingnut, a driver tool can be used to turn



STEP 13

Connect the underside of the scoops using a T20 Torx bit and driver into place. Using the two available positions thread the M4 x 14mm (**Short**) screws (H) and M4 washers (G). Tighten down until the liner is compressed and the scoop gasket seals to the hood. Recommended torque specification 10-15 in. lbs.



STEP 14

Once the screws are tightened in the two available positions, remove the installed threaded rods by hand one at a time and replace it with appropriate hardware



STEP 14 A

Tighten down all of the screws firmly.



STEP 15

Repeat Steps 9-14 for the other side



STEP 16

Once you are satisfied with the alignment of the scoops and liner. Make sure all of the screws are firmly tightened. Replace remaining push-in rivets securing the hood liner to the hood



STEP 17

Close the hood. Remove the tape holding down the hood scoops. The installation is now complete.



HOOD SCOOP PLUGS INSTALLATION

If extreme weather conditions arise such as heavy snow, dust or other debris grill plugs have been provided to prevent these elements from entering the hood scoops.

STEP 1

Locate the scoop plugs included with the kit (E & F)



STEP 2

Position the appropriate scoop plug in front of the corresponding scoop (A & C).



STEP 3

Make sure all the lower prong features of the plug are located into the appropriate grill features



STEP 4

Align the topmost prongs with the corresponding grill feature



STEP 5

Push the plug into the grill



STEP 6

To remove plugs pull from the innermost corner of the plug and peel away from the grill



STEP 7

Repeat steps 1-6 for the other hood scoop. Installation is now complete

