

INSTALL INSTRUCTIONS FOR 10-1027

PART#: 10-1027



PRINT

Vehicle Application

- YEAR: 2019-2022
- MAKE: Mercedes
- MODEL: 144" and 170" Wheelbases, 4x2 and 4x4,
- ENGINE: 4 & 6 Cylinder Diesel

Required Tools

- Flathead Screwdriver or 5/16" Nut Driver
- Mallet/Hammer
- 11mm Socket
- 3/4" Socket
- 3/4" Drill Bit
- Automotive paint or spray paint
- Ratchet
- 12" Driver Extension

Optional Tools

- Vehicle Lift
- Transmission Jack
- Precision Pick



Before You Start

- Please read the entire product guide before proceeding
- Ensure all parts are present.
- If you are missing any parts, please call or text us at (909)-675-1313
- Do not work on your vehicle while the underbody components are hot.
- Make sure the vehicle is in park or the parking brake is set if you plan on working on the ground. If working on a lift, make sure the vehicle is lifted safely and securely.

Before You Start

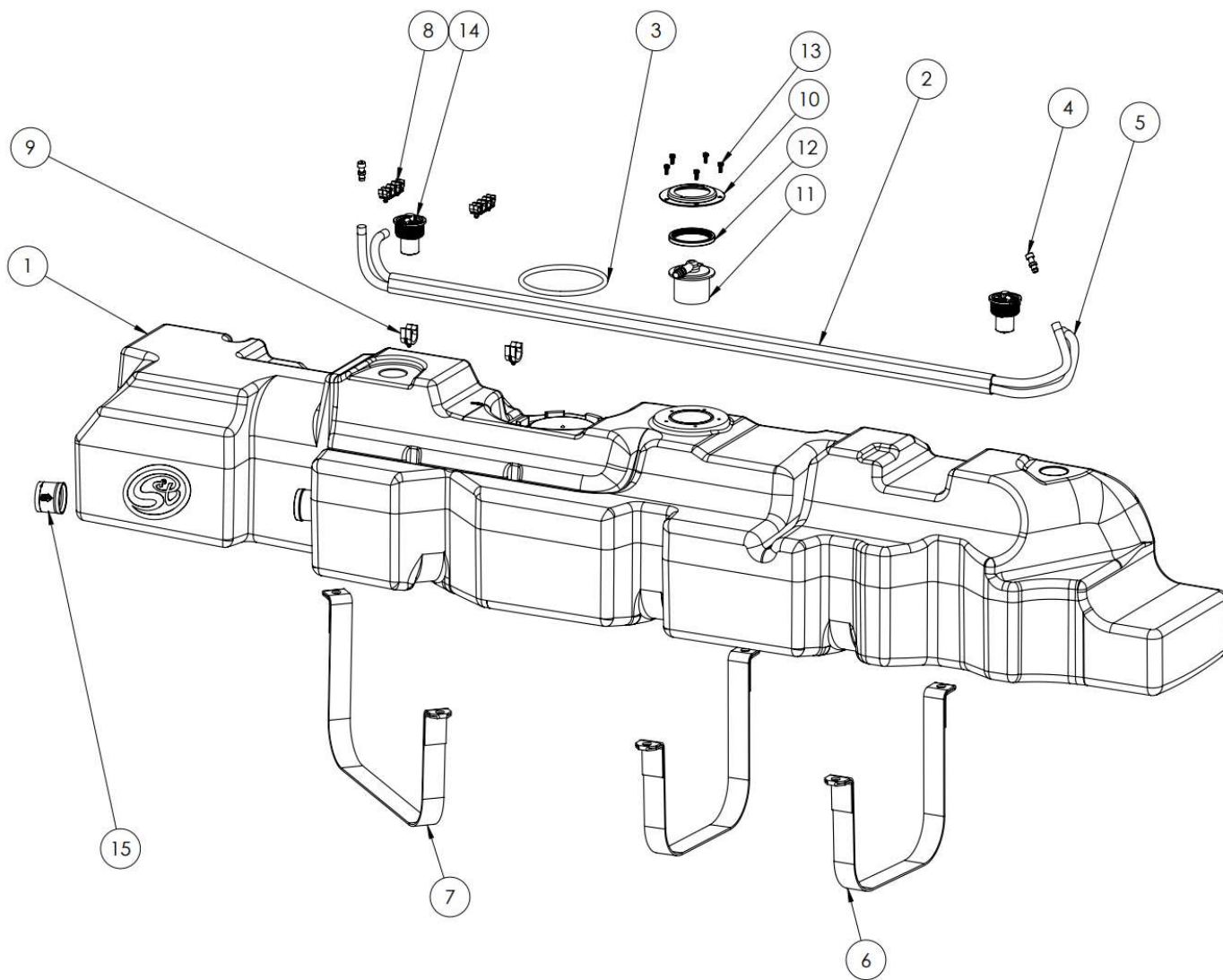
Disconnect and isolate both of the negative battery cables

Before installing S&B Tank, conduct pressure test to ensure o'ring is properly seated.

Auxiliary Fuel Tanks will void the Lifetime Warranty.

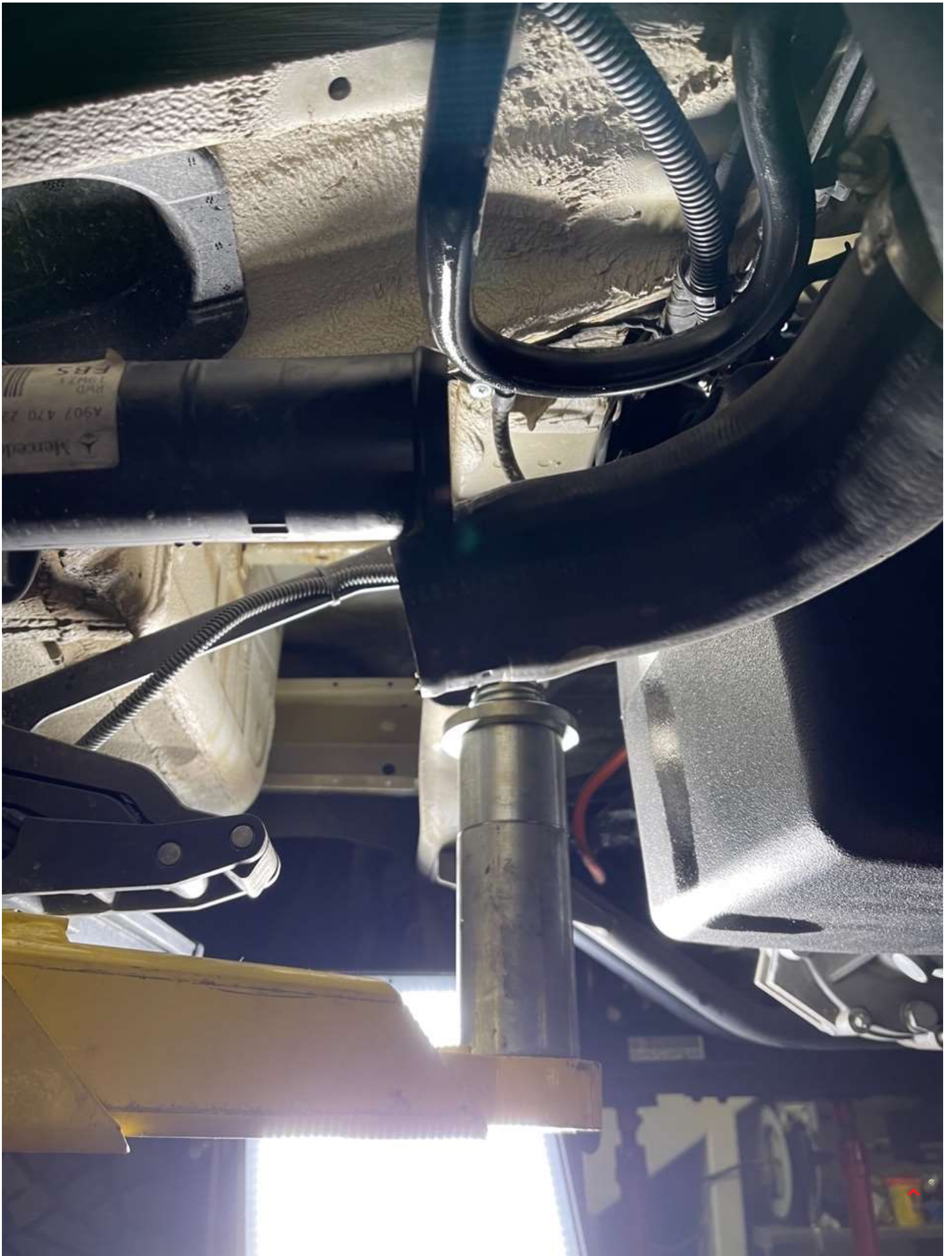
DIESEL FUEL ONLY





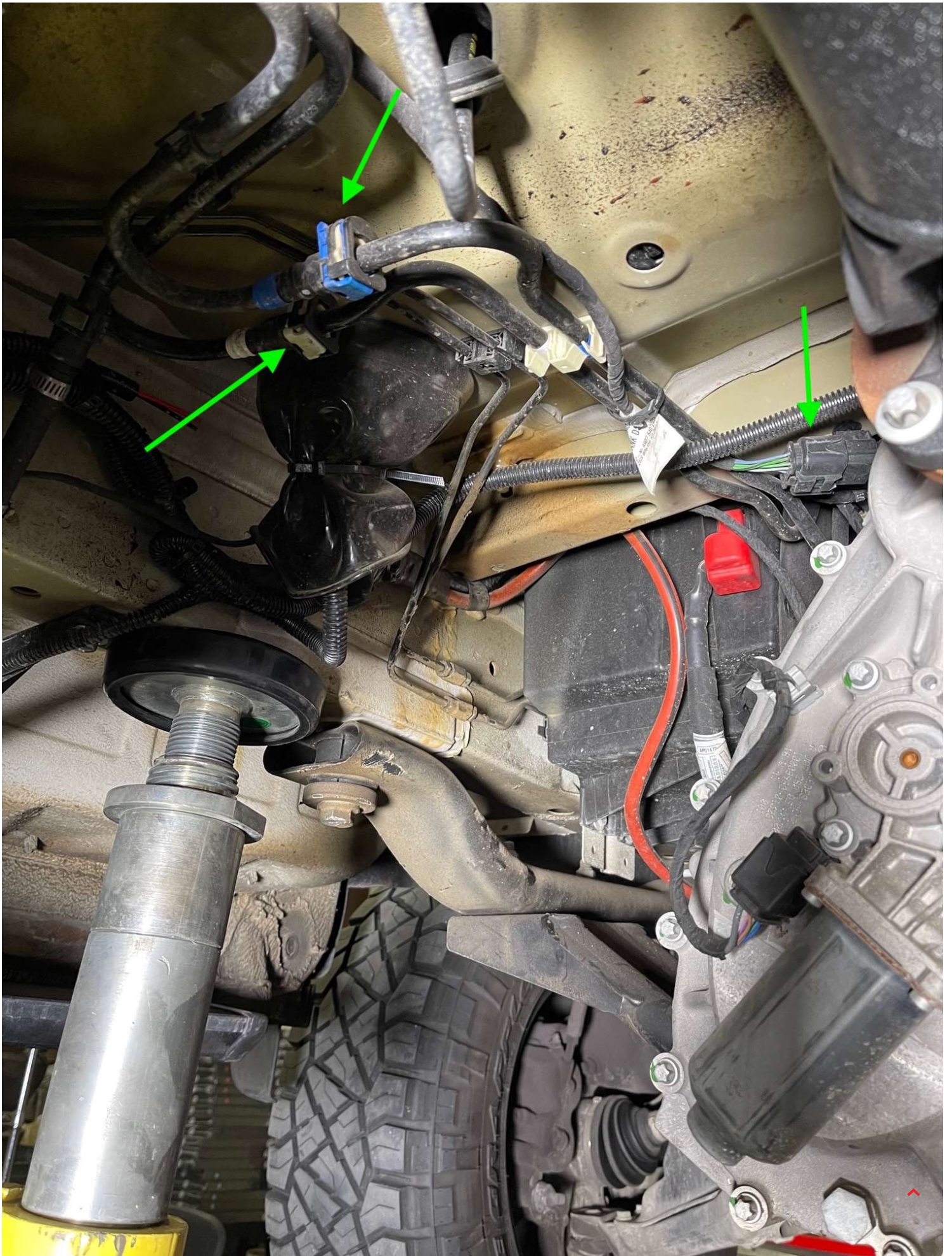
ITEM NO.	PART NUMBER	DESCRIPTION	QTY.
1	10-1027	HIGHT CAPACITY REPLACEMENT TANK	1
2	AI2107-45	FABRIC HEAT SHRINK, 45" LONG	1
3	TI1094-00	BUNA-N 50 DURO 8MM CS x 17.32" CUT LENGTH	1
4	TI1141-00	ROLLOVER VENT CAP	2
5	TI1149-60	FUEL HOSE, 5/16" x 60", BK	2
6	TI1214-00	MIDDLE STRAP FOR 10-1025	2
7	TI1216-00	FRONT STRAP FOR 10-1025	1
8	TI1217-00	FUEL LINE HOLDER (4 LINES)	2
9	TI1218-00	FLVV LINE HOLDER (1 LINES)	2
10	TI1219-00	FLVV METAL RING	1
11	TI1220-00	FILL LIMIT VENTING VALVE	1
12	TI1223-00	FLVV GASKET	1
13	TI1225-00	SCREW 10-24 THREAD SIZE, 3/8" LONG	5
14	TI1226-00	ROLLOVER VENT	2
15	TI1237-00	2" INLET CHECK VALVE	1

INSTALL INSTRUCTIONS



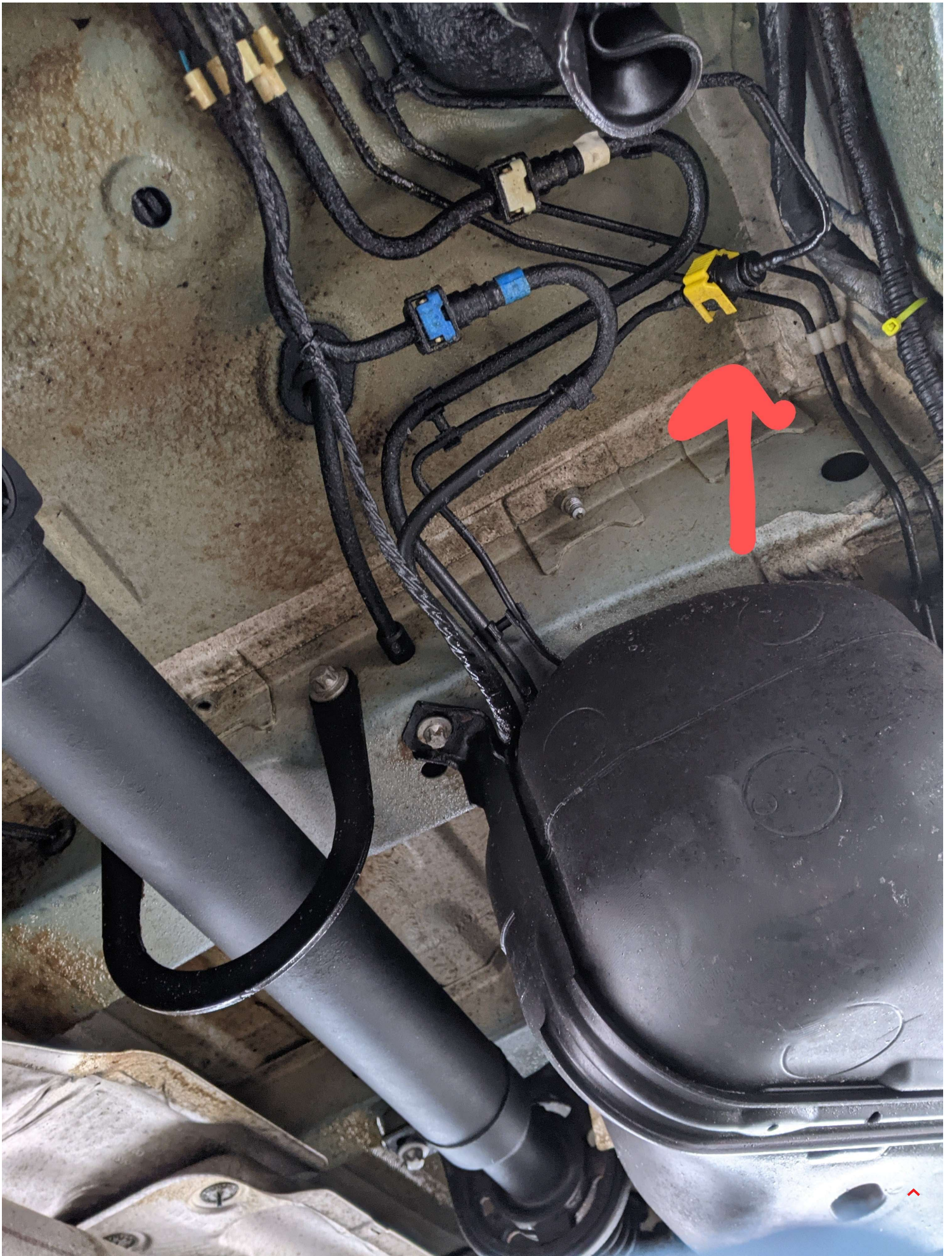
STEP 1

Start to remove the tank by disconnecting the filler neck. Use a flathead screwdriver to undo clamp on filler neck side of hose. There is a check valve in the tank preventing fuel from leaving the tank but there will be some fuel in the filled hose. If you slowly remove the hose, you can drain this remaining fuel into a bucket.



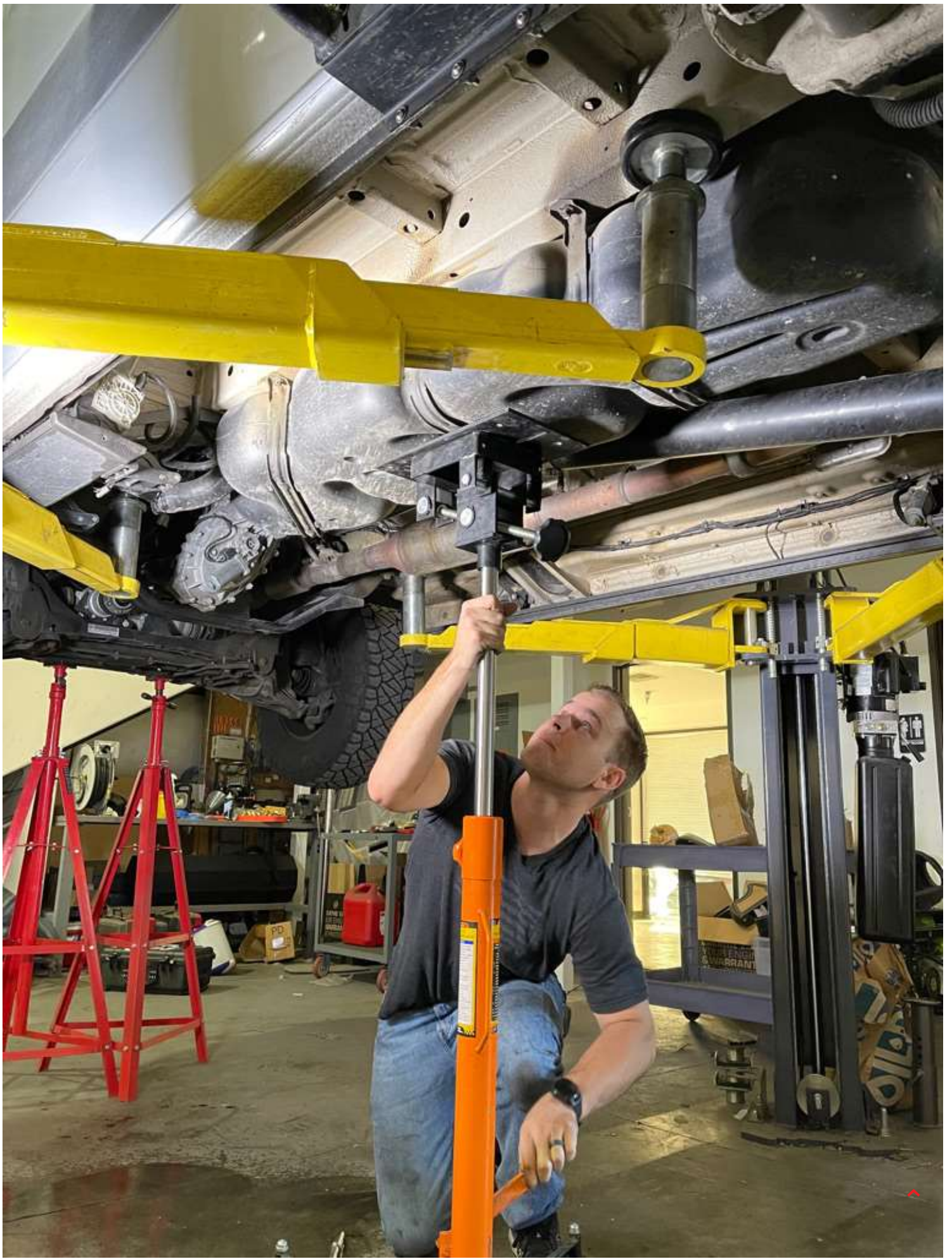
STEP 2

Next disconnect fuel sender/pump connector, and fuel lines Shown in Picture. To disconnect lines, use flathead screwdriver to pull up on lock (blue/white) and pull hard lines apart.



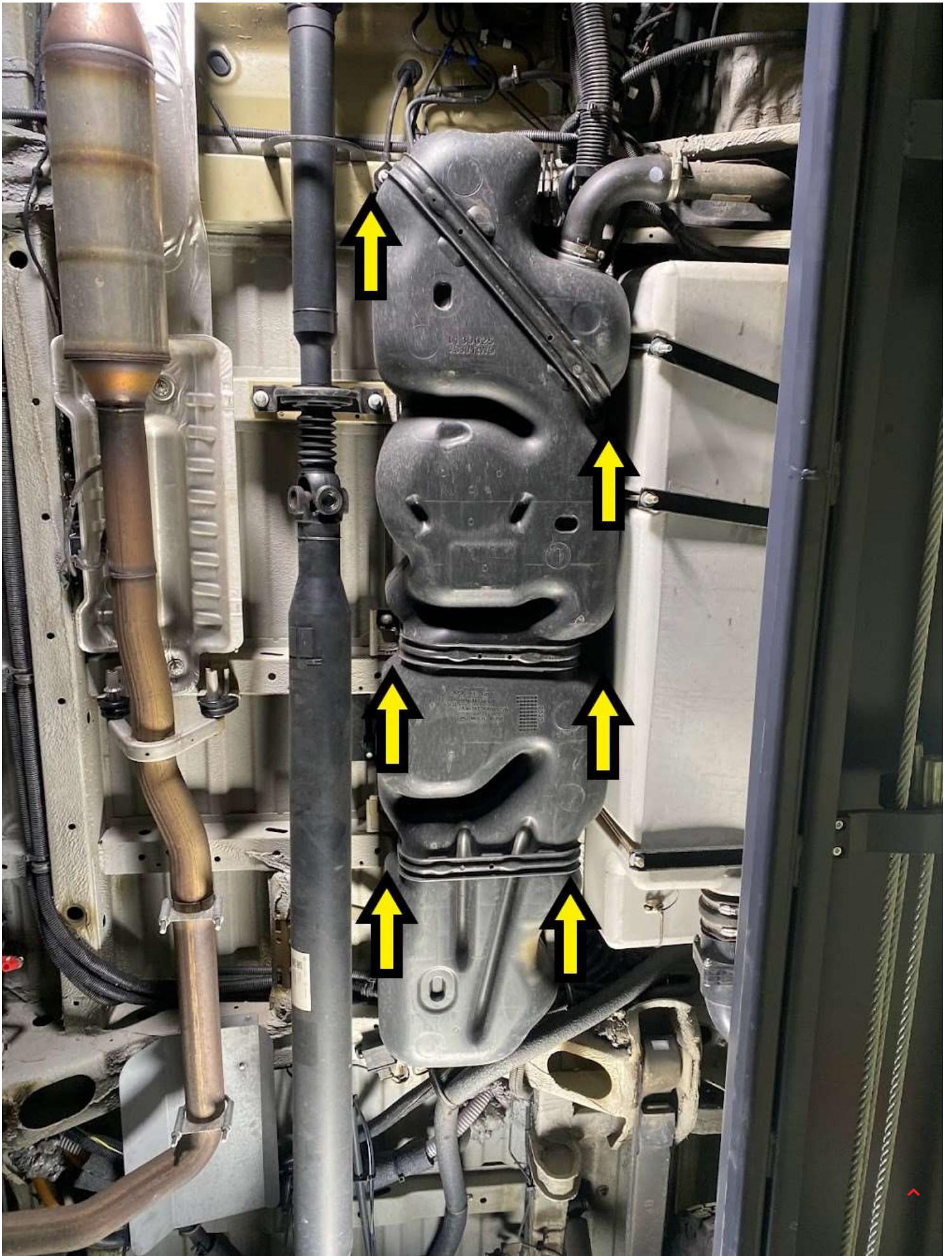
STEP 2A

If you have a factory heater booster, disconnect the yellow line. On vans with an aftermarket heater, the kind of connector might be different, but still disconnect so the tank is free to drop.



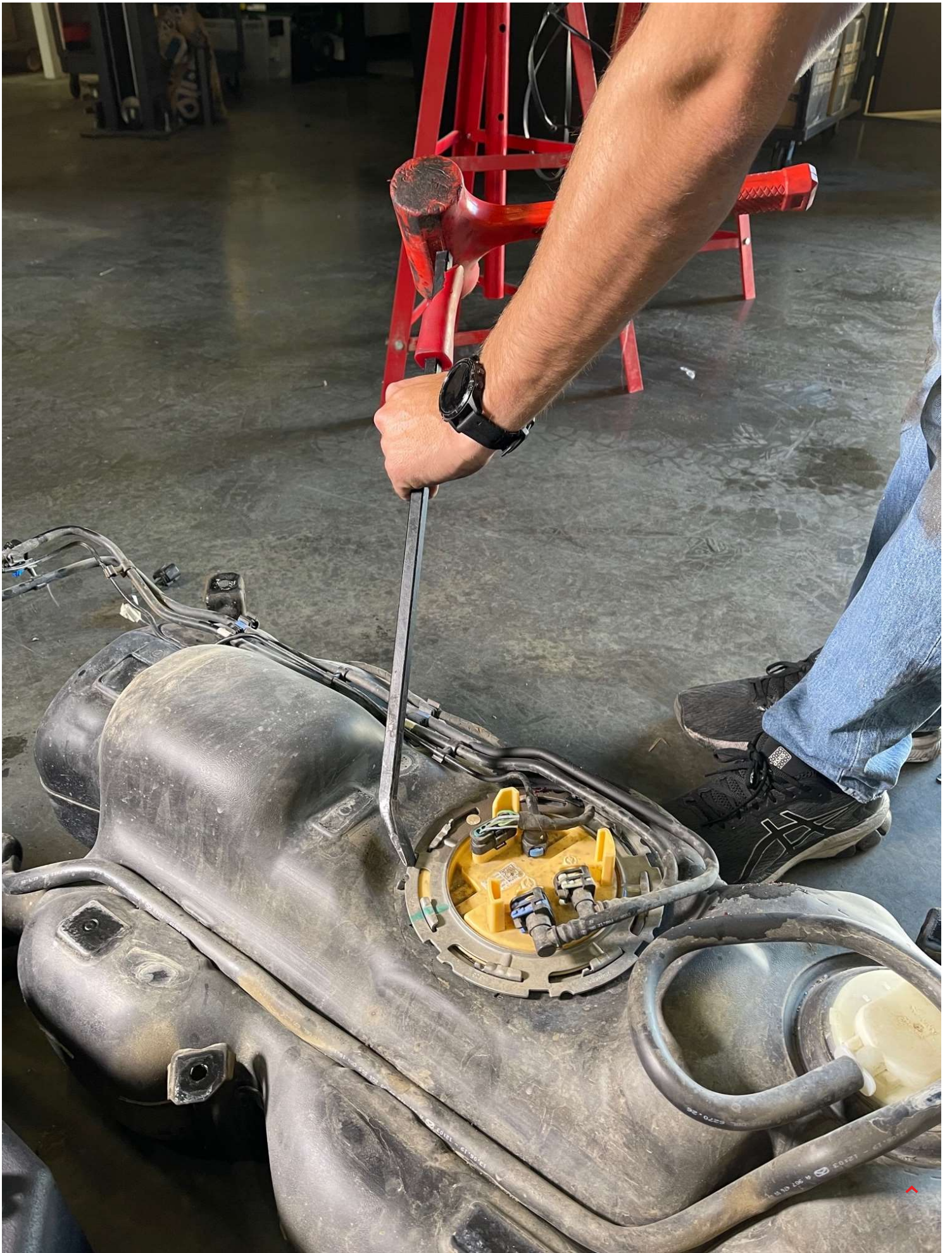
STEP 3

Position jack under fuel tank to support tank. It is now time to drop the tank (someone to assist you will make this part easier). If you are doing the install on the ground, support the underside of the tank with a floor jack or straps.



STEP 4

Next loosen (6) 11mm bolts holding 3 straps to the tank and retain the bolts for installation of the S&B tank. Lower tank and remove it from under the vehicle.



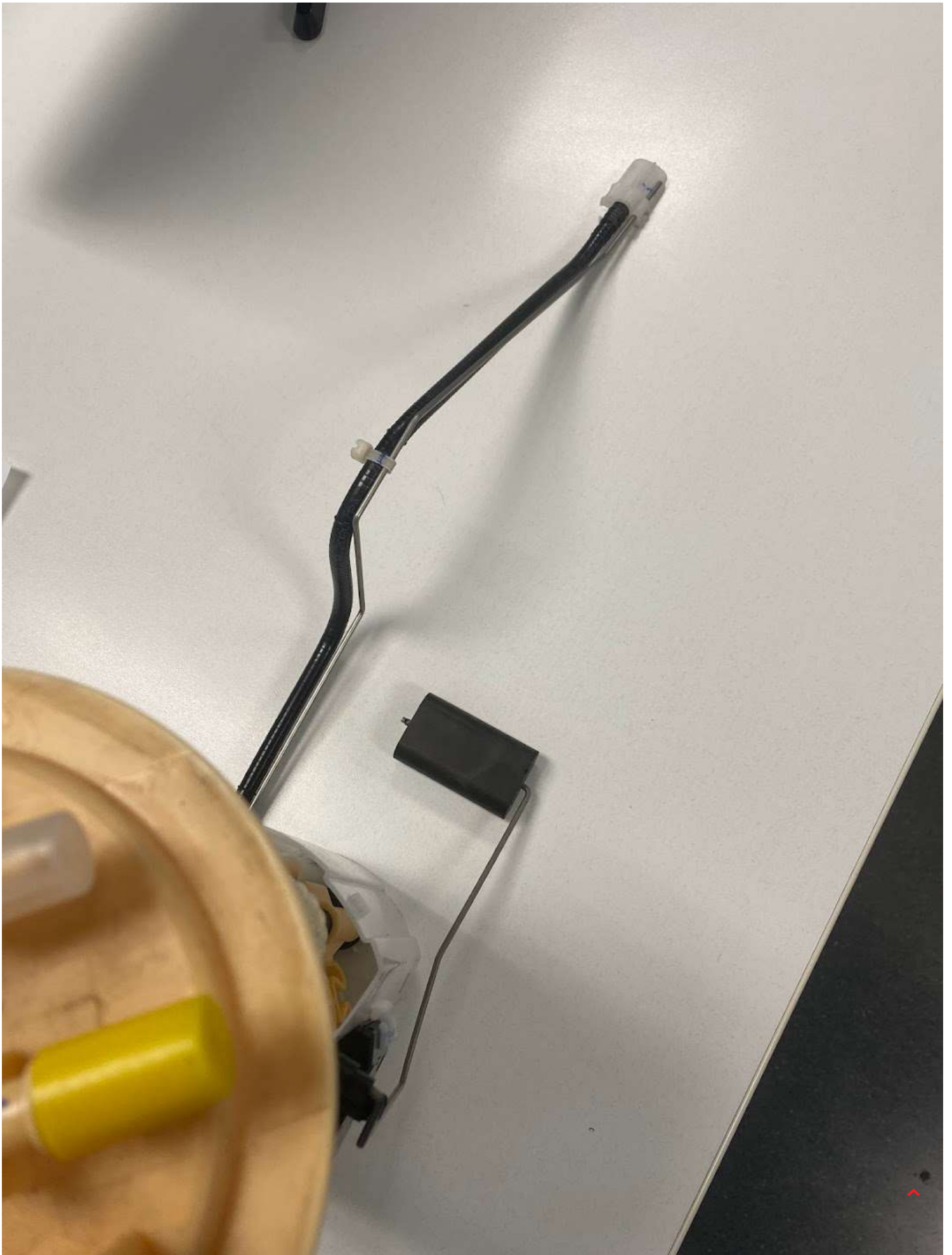
STEP 5

Remove fuel pump assembly from the old tank. This can be done by using a pry bar or screwdriver and hammer to remove the locking ring. Take the screwdriver and place it on the outside teeth of the locking ring and firmly pound the locking ring counter clockwise until it releases. Pull fuel pump module out being careful of the orientation as you pull out (be careful of the float and the black pickup snake).



STEP 6

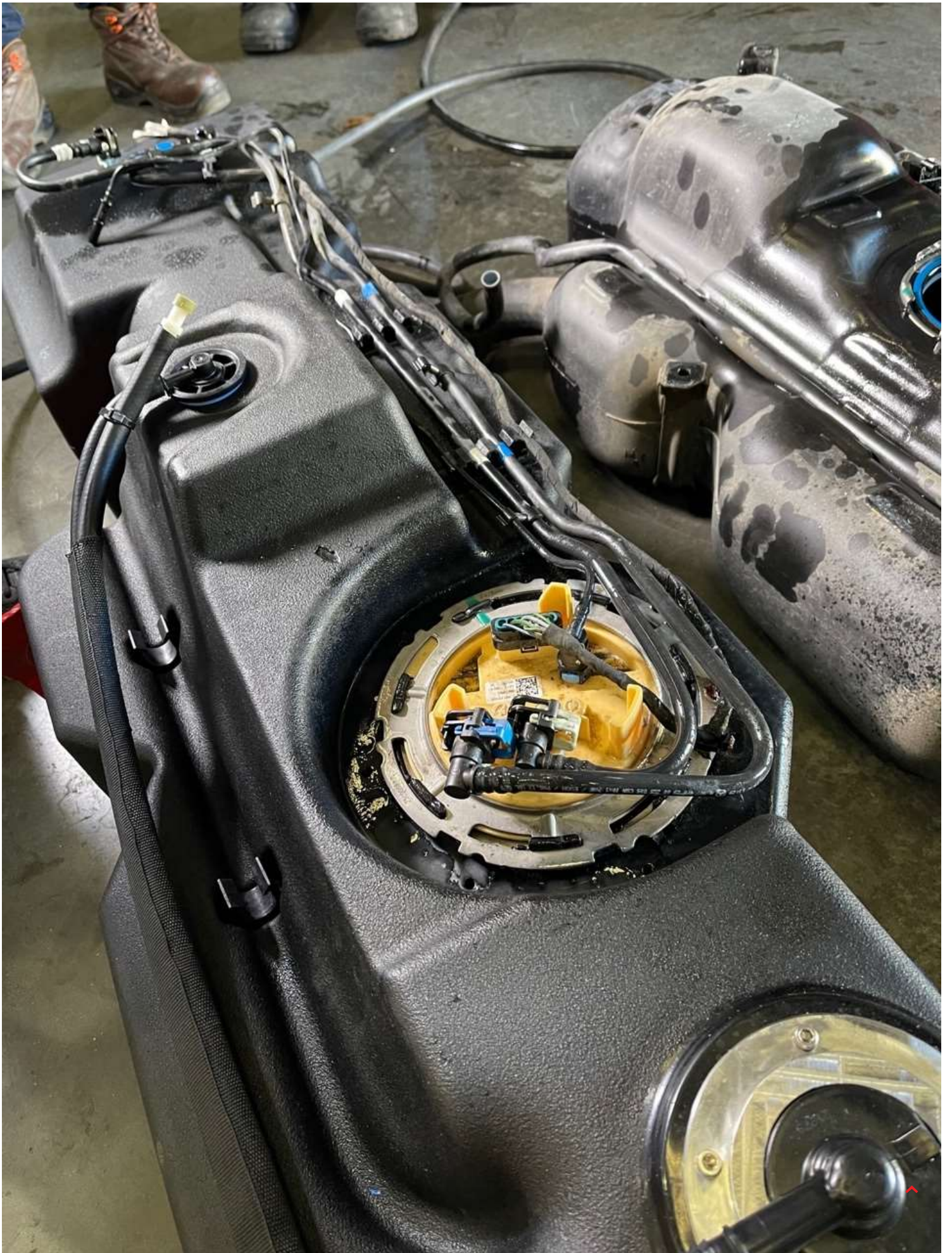
Place large black S&B O-ring in the S&B Tank O-ring groove. Place the sender/pump assembly into the S&B tank. Next using a screwdriver and hammer but now rotating the ring clockwise (be sure All tabs on ring lock under S&B tank tabs or tank will not seal!). The picture shows the ring before it is locked into place.



STEP 7

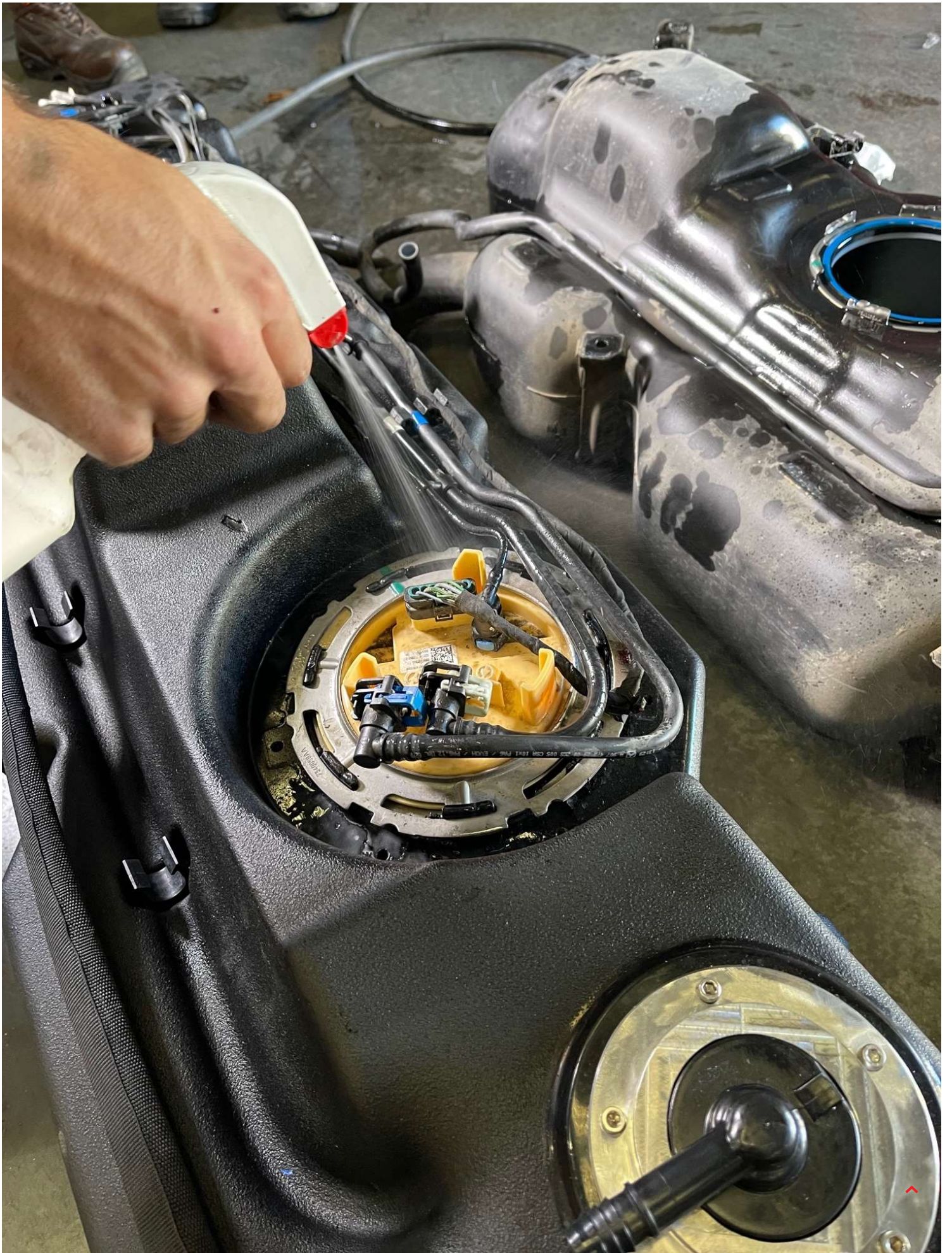
Make sure there is separation between the float and black tube once the bucket is in the tank. If the float contacts the black tube, the gauge will not work properly.





STEP 8

Route fuel lines and electrical harness along tabs on the top of tank just like the original tank.



STEP 9

Poke a small hole in the rubber cap covering the filler spout on the S&B Tank, block off the openings in the tank with electrical tape or cover with fingers, spray the sending unit o-ring area with soapy water and pressurize test the tank to make sure the o'ring was properly seated and there are no leaks in the tank.



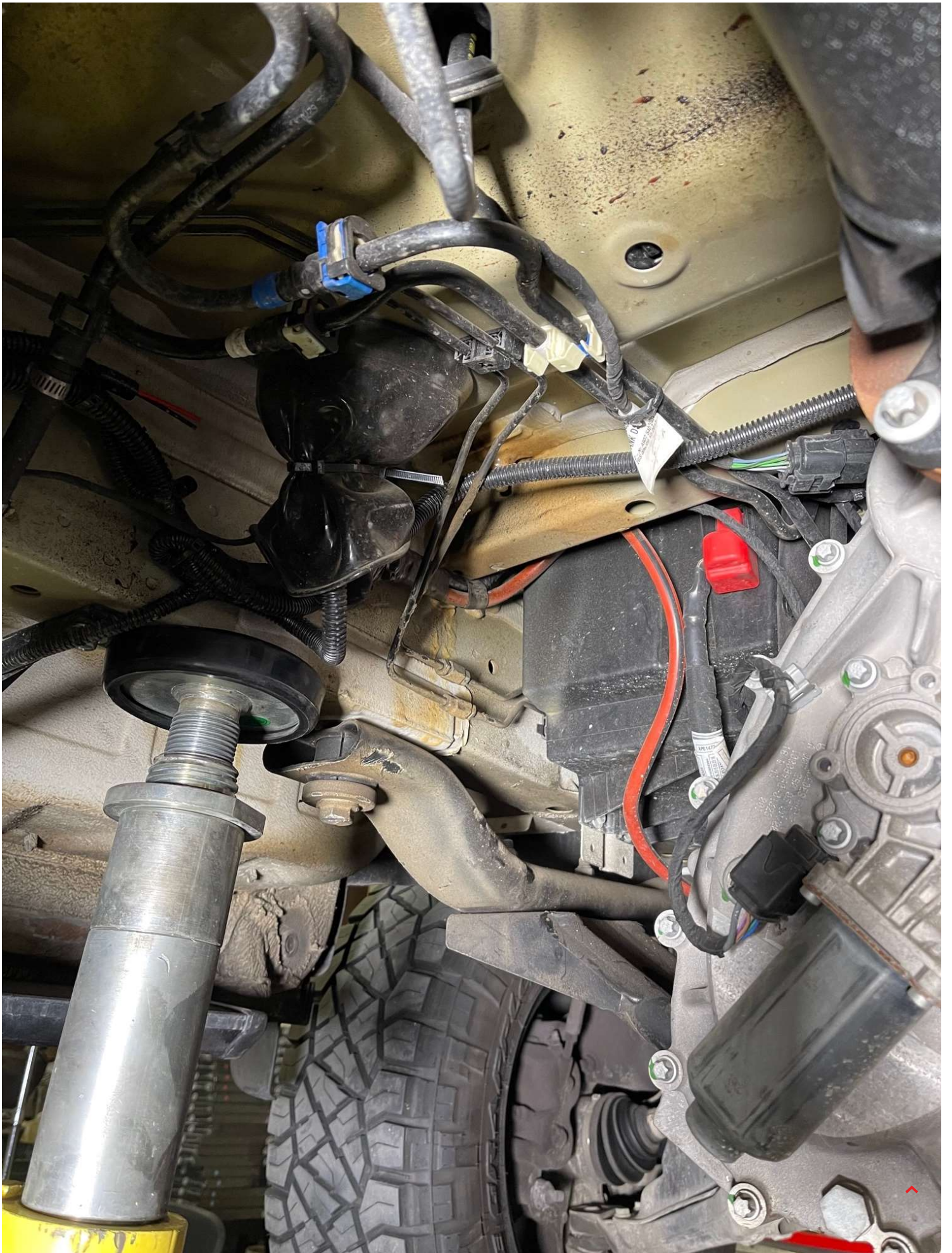
STEP 10

Transfer over the fill hose and put it onto the S&B Tank. Insert the check valve into the tank end of the hose with the arrow facing into the tank.



STEP 10B

Transfer over the vent hose onto the S&B Tank



STEP 11

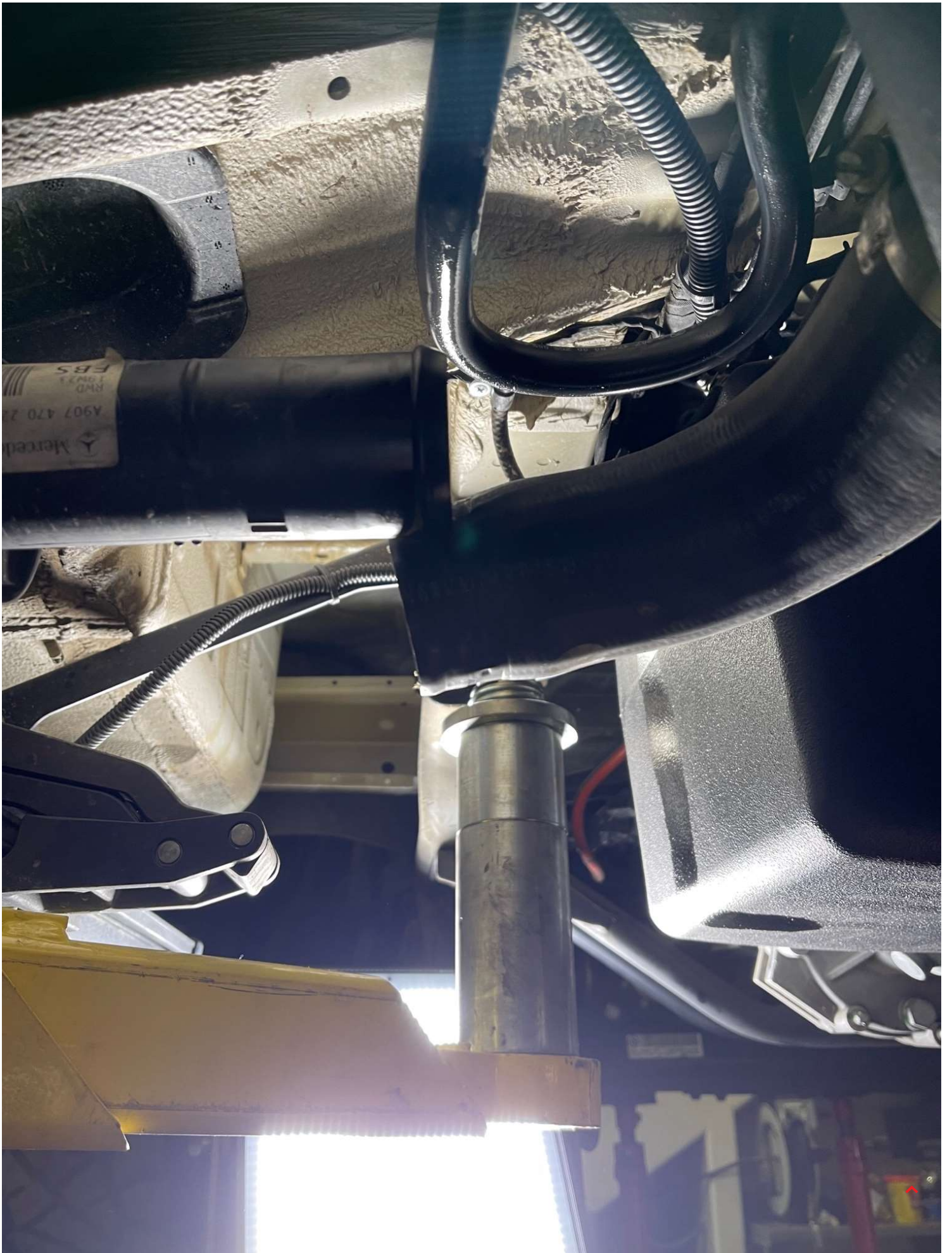
Reconnect fuel lines and electrical connector from step 2.



STEP 12

Install the included S&B Tank straps with the original fuel tank bolts. Tighten all 6 bolts.





STEP 13

Reinstall fuel filler hose to filler on vehicle side and tighten both clamps.



CHECKLIST

This final checklist is very important. #1 Make sure all nuts are safely fastened and torqued. #2 Ensure there is proper driveshaft clearance and the straps are tight #3 Double check fuel line connections, the electrical connection as well as the vent and fill lines. #4 Lastly, fill the tank full and check for any leaks. If you have any questions, call or text us at 909.675.1313



