

INSTALL INSTRUCTIONS FOR 10-1002

PART#: 10-1002

Vehicle Application

- YEAR: 2000-2010
- MAKE: Ford
- MODEL: F-350, F-450, and F-550 Cab & Chassis
- ENGINE: 7.3, 6.0, 6.4 Diesel

Tools Required

- 15mm Socket
- 19mm Socket
- Ratchet
- 10" or 12" driver extension
- Flathead Screwdriver or 8mm Nut Driver
- Mallet or Hammer
- Transmission or Floor Jack

Optional Tools

- Vehicle Lift
- Precision Pick
- Pry Bar

Before You Start

- Please read the entire product guide before proceeding
- Ensure all parts are present.
- If you are missing any parts, please call or text us at (909)-675-1313
- Do not work on your vehicle while the underbody components are hot.
- Make sure the vehicle is in park or the parking brake is set if you plan on working on the ground. If working on a lift, make sure the vehicle is lifted safely and securely.

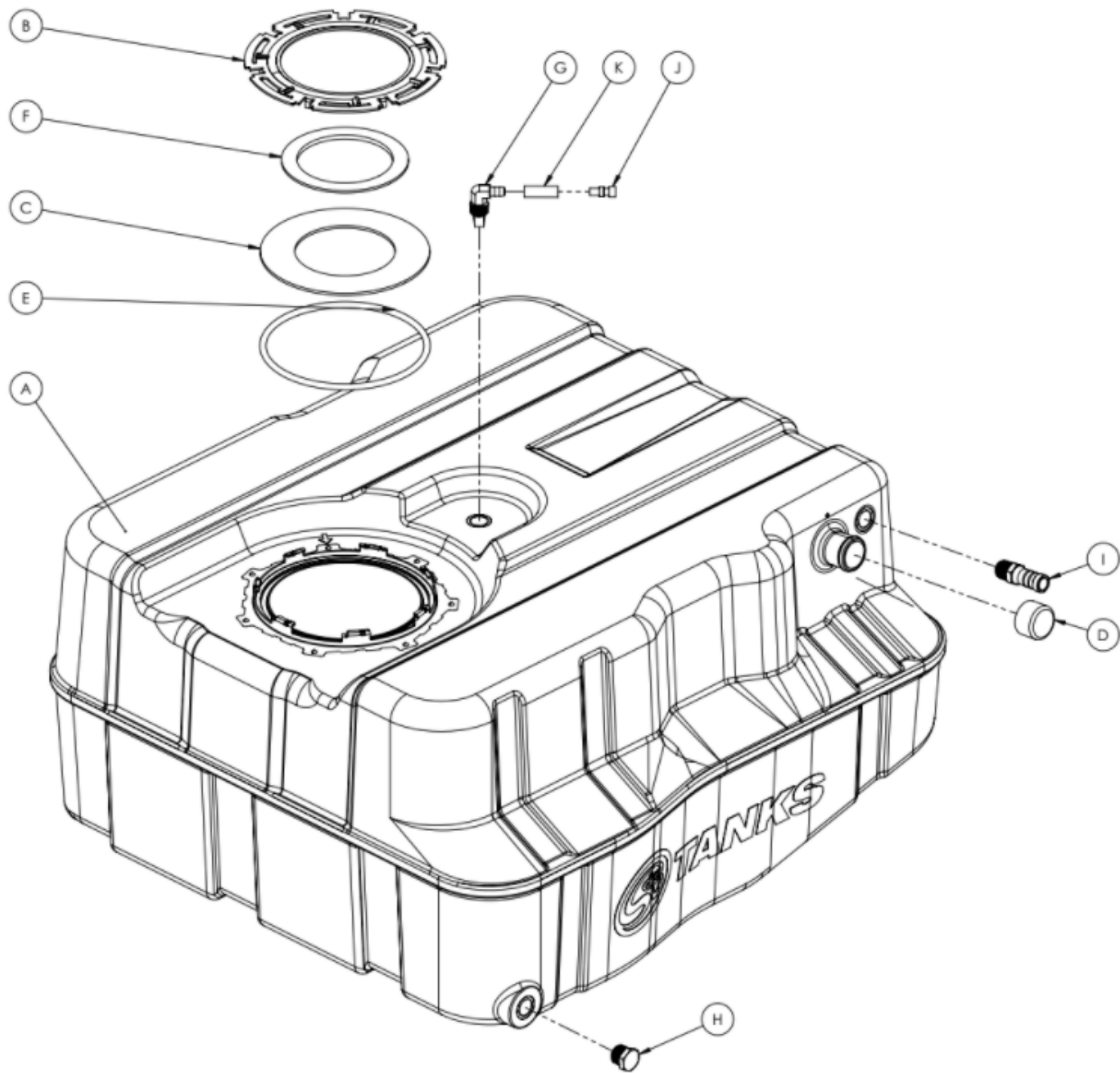
Before You Start

Drain your original fuel tank before beginning the S&B Installation process. S&B Tanks recommends removing only an empty or near empty tank for your safety. We recommend using a siphon or electronic transfer pump.

Disconnect and isolate both of the negative battery cables

Before installing S&B Tank, conduct pressure test to ensure o'ring is properly seated.

In-bed Auxiliary Fuel Tanks will void the Lifetime Warranty.



ITEM NO.	PART NUMBER	DESCRIPTION	QTY.
A	10-1002	HIGH CAPACITY REPLACEMENT TANK	1
B	TI0005-00	LOCKING RING FOR 10-1002	1
C	TI0006-00	ADAPTOR ROUND PLATE	1
D	TI1092-00	TANK FILLER COVER	1
E	TI1103-00	22.25" VOR-N50.275X6.999	1
F	TI1120-00	ADAPTOR RING GASKET	1
G	TI1122-00	ROLL OVER VENT FITTING, 1/2" NPT	1
H	TI1125-00	.5" PIPE PLUG	1
I	TI1128-00	BARBED VENT FITTING, STRAIGHT, 3/4" BARB TO 1/2" NPT	1
J	TI1141-00	ROLLOVER VENT CAP	1
K	TI1169-02	5/16" FUEL HOSE 2"	1

INSTALLATION INSTRUCTIONS

STEP 1

Raise the vehicle up on a lift to working height.

- Installation can be completed without a lift. Make sure the vehicle is safely parked with the parking brake set.



STEP 2

Disconnect the vent and fill hose from the filler/vent neck assembly.

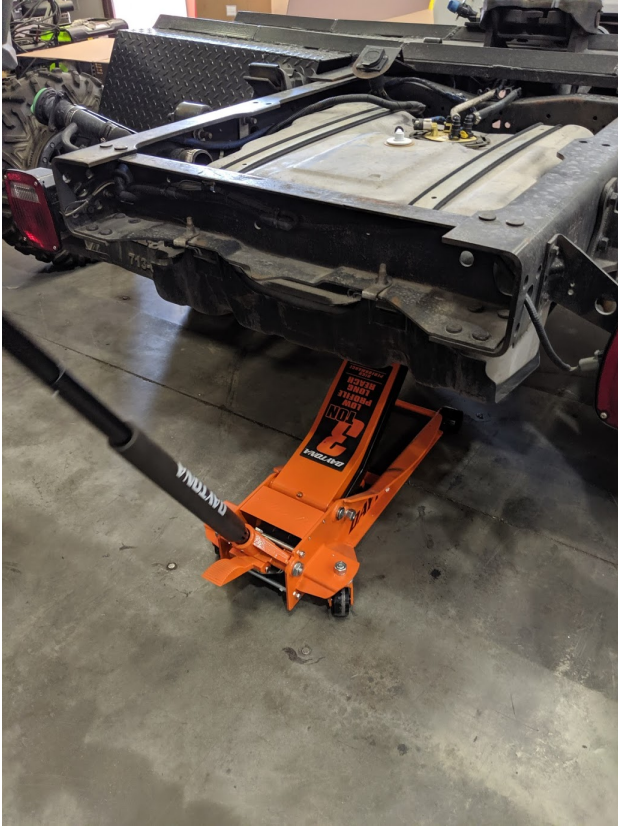
- Flathead Screwdriver or Nut Driver



STEP 3

Center the hydraulic jack underneath the fuel tank and raise until the jack contacts the tank. Caution: Support the tank properly as remaining fuel can slosh and cause the tank to shift.

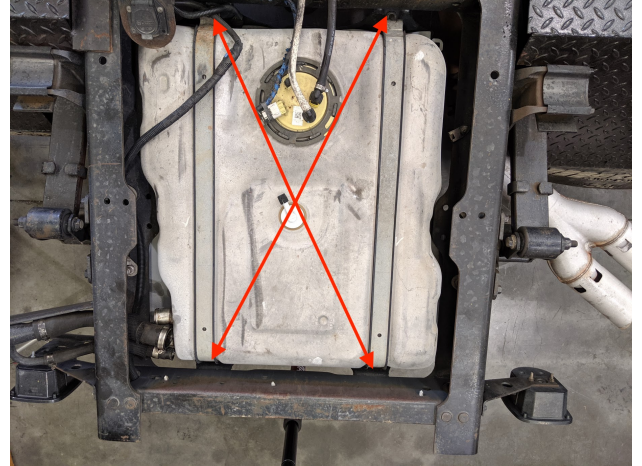
- Lift Install: Hydraulic Jack
- Floor Install: Floor jack with added support to properly hold tank



STEP 4

Remove the 4 bolts that fasten the skid plate to the frame. Make sure you only remove the 15mm that hold the skid plate to the frame. You will also see two 19mm bolts that hold the fuel tank in the skid plate. These will be removed later.

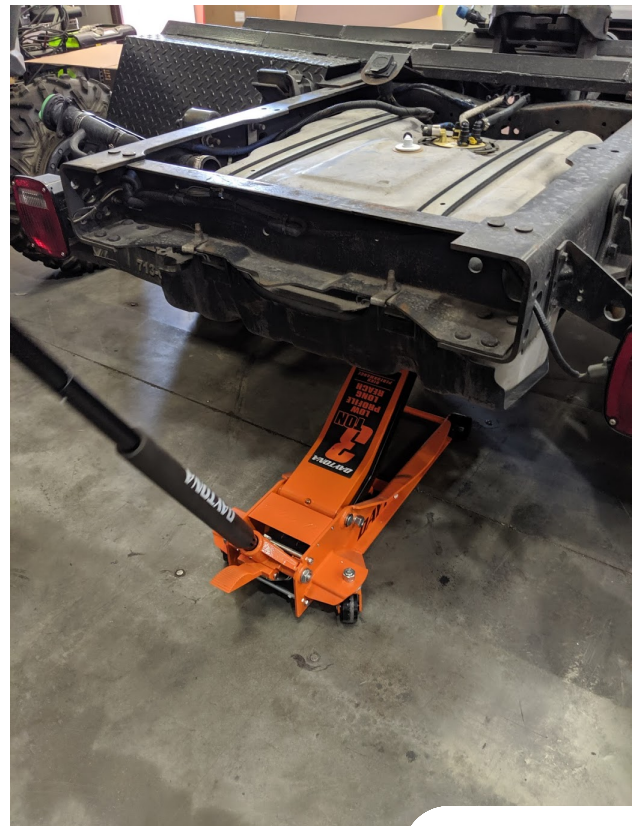
- 15mm Socket
- Ratchet



STEP 5

Lower the tank 6" until you can easily reach the fuel sending unit to disconnect all connectors.

- Floor Jack or Transmission Jack



STEP 6

Remove the electrical connector on the sending unit. Use a screwdriver or pick to slide the red locking tab out, then depress the tab and the connector will release.

- Flathead Screwdriver or Precision Pick



STEP 7

Remove both the feed and return lines from the sending unit. Squeeze the blue buttons on the fuel connector, gently press in towards the barb then pull off.



STEP 8

Now the tank is completely disconnected from the vehicle and can be lowered from the vehicle. Ensure the tank is still properly supported as remaining fuel can slosh and cause the tank to move.

- Transmission or Floor Jack



STEP 9

Clean the area around the fuel sending unit to prevent debris from getting into the tank when removing the sending unit. Now use a 8mm socket to remove the OEM sending unit. This sending unit will be reused with the S&B Tank



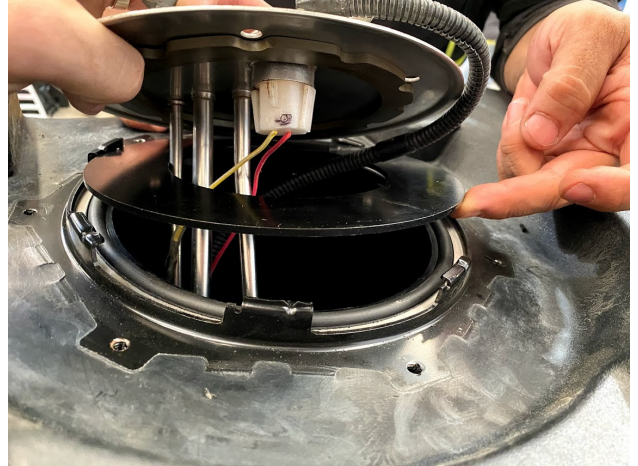
STEP 10

Place the S&B O ring into the groove on your S&B Tank.



STEP 11

IMPORTANT: If your OEM sending unit already has a gasket installed onto the sending unit flange, put the large S&B black washer onto the o'ring and then place the sending unit into the tank in the same orientation as the OEM tank. If your sending unit does not have a gasket then install our gasket(item F) after the black washer(item C).



STEP 12

Place the S&B locking ring over the sending unit and hit the ring clockwise until the rib on the OEM locking ring is fully seated past the indentation on the S&B receiving ring.



STEP 13

On the OEM fuel tank. Use a 19 metric socket to remove 2 strap bolts which hold the stock fuel tank into the skid plate.

- 19mm Deep Socket
- Ratchet

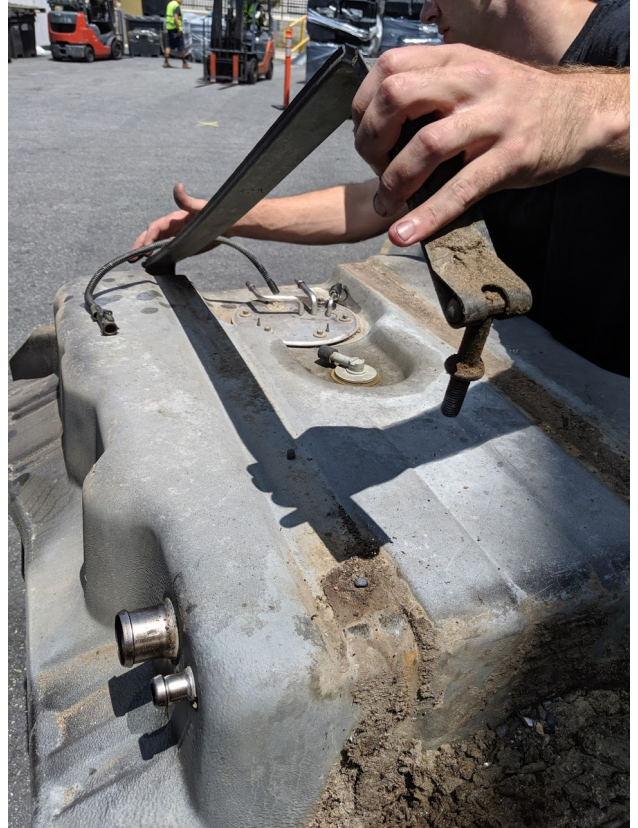


STEP 14

Remove the OEM tank from the skid plate. You may have to pry to get the OEM tank to pop out of the skid plate.

Optional Tools

- Pry Bar



STEP 15

Place the S&B Tank in the OEM skid plate, reassemble the straps using a 19mm socket.

- 19mm Deep Socket
- Ratchet



STEP 16

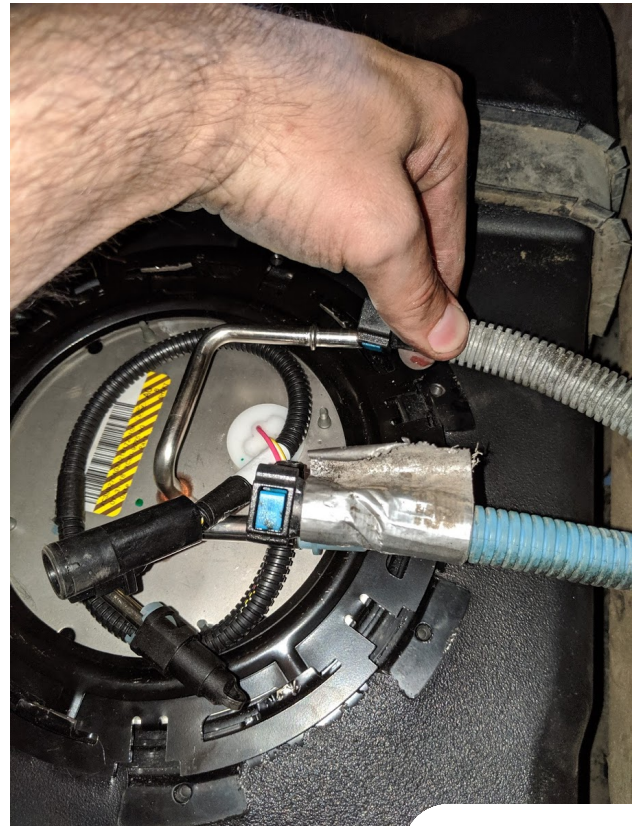
Position the S&B Tank on a jack and raise the tank until you are able to reconnect sending unit connections. Ensure the vent lines are positioned through the frame properly.

- Floor or Transmission Jack



STEP 17

Reconnect the electrical connector on the sending unit. Slide the red locking tab back into the locked position.



STEP 18

Reconnect the electrical connector.



STEP 19

With a 15 metric socket, reinstall the 4 bolts that hold the fuel tank skid plate assembly to the truck frame. Hand torque the bolts to make sure all 4 bolts are tight.

- 15mm Socket
- Ratchet



STEP 20

Slide the vent hoses onto your S&B Tank and use a flathead screwdriver to tighten hose clamps.

- Flathead Screwdriver or Nut Driver



INSTALLATION COMPLETE

If you have had any questions, please call or text us at (909)675-1313. If you installed your S&B Tank because of de-lamination issues, we recommend cleaning your fuel system and not re using any of the fuel from your previous tank. Thank you for purchasing an S&B Tank.

