

INSTALL INSTRUCTIONS FOR 10-1001

PART#: 10-1001

Vehicle Application

- YEAR: 2011-2016
- MAKE: Ford
- MODEL: F-350, F-450, and F-550 Cab & Chassis
- ENGINE: 6.7 Diesel

Tools Required

- 15mm Socket
- 19mm Socket
- Ratchet
- 10" or 12" driver extension
- Flathead Screwdriver or 8mm Nut Driver
- Mallet or Hammer
- Transmission or Floor Jack

Optional Tools

- Vehicle Lift
- Precision Pick
- Pry Bar

Before You Start

- Please read the entire product guide before proceeding
- Ensure all parts are present.
- If you are missing any parts, please call or text us at (909)-675-1313
- Do not work on your vehicle while the underbody components are hot.
- Make sure the vehicle is in park or the parking brake is set if you plan on working on the ground. If working on a lift, make sure the vehicle is lifted safely and securely.

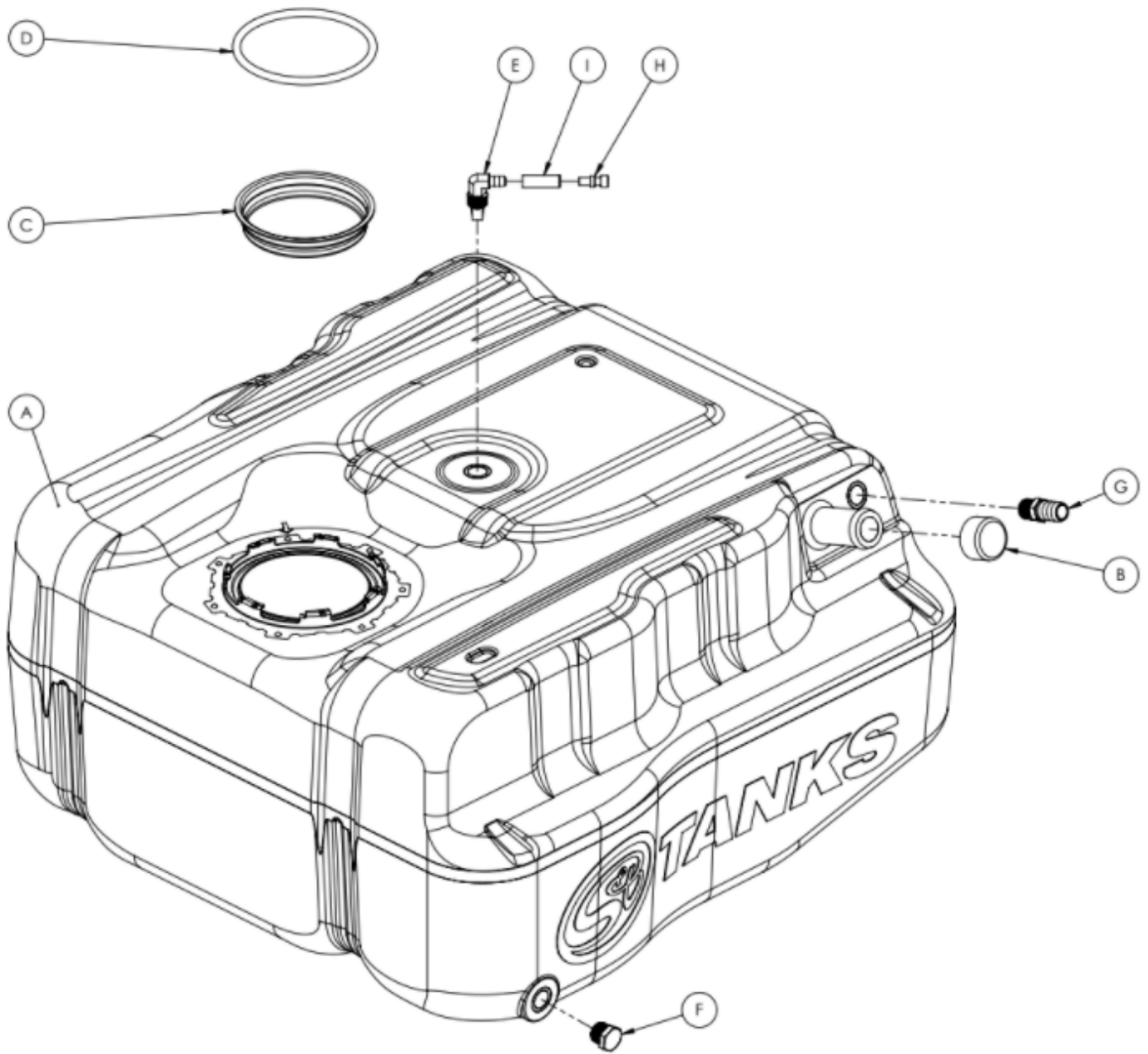
Before You Start

Drain your original fuel tank before beginning the S&B Installation process. S&B Tanks recommends removing only an empty or near empty tank for your safety. We recommend using a siphon or electronic transfer pump.

Disconnect and isolate both of the negative battery cables

Before installing S&B Tank, conduct pressure test to ensure o'ring is properly seated.

In-bed Auxiliary Fuel Tanks will void the Lifetime Warranty.



ITEM NO.	PART NUMBER	DESCRIPTION	QTY.
A	10-1001	HIGH CAPACITY REPLACEMENT TANK	1
B	T11092-00	TANK FILLER COVER	1
C	T11093-00	TANK OPENING PLUG	1
D	T11094-00	BUNA-N 50 DURO 8MM CS x 17.32" CUT LENGTH	1
E	T11122-00	ROLL OVER VENT FITTING, 1/2" NPT	1
F	T11125-00	.5" PIPE PLUG	1
G	T11128-00	BARBED VENT FITTING, STRAIGHT, 3/4" BARB TO 1/2" NPT	1
H	T11141-00	ROLLOVER VENT CAP	1
I	T11169-02	5/16" FUEL HOSE 2"	1

INSTALLATION INSTRUCTIONS

STEP 1

Raise the vehicle up on a lift to working height.

- Installation can be completed without a lift. Make sure the vehicle is safely parked with the parking brake set.



STEP 2

Disconnect the vent and fill hose from the filler/vent neck assembly.

- Flathead Screwdriver or Nut Driver



STEP 3

Center the hydraulic jack underneath the fuel tank and raise until the jack contacts the tank. Caution: Support the tank properly as remaining fuel can slosh and cause the tank to shift.

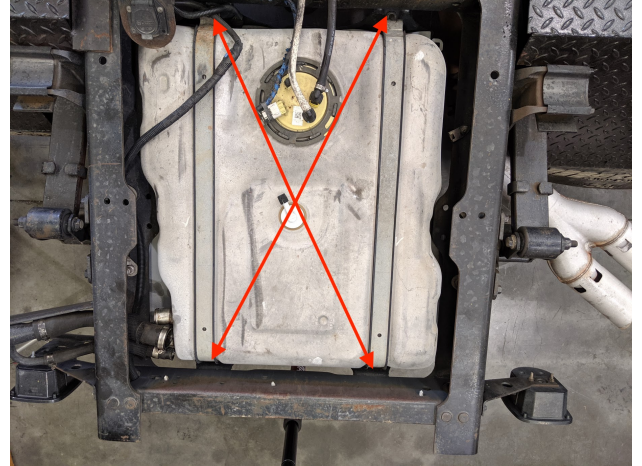
- Lift Install: Hydraulic Jack
- Floor Install: Floor jack with added support to properly hold tank



STEP 4

Remove the 4 bolts that fasten the skid plate to the frame. Make sure you only remove the 15mm that hold the skid plate to the frame. You will also see two 19mm bolts that hold the fuel tank in the skid plate. These will be removed later.

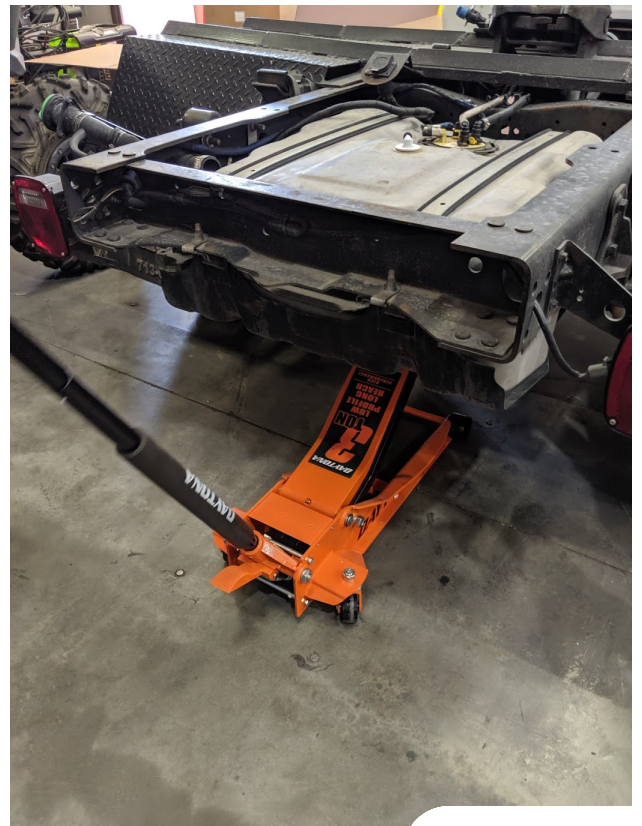
- 15mm Socket
- Ratchet



STEP 5

Lower the tank 6" until you can easily reach the fuel sending unit to disconnect all connectors.

- Floor Jack or Transmission Jack



STEP 6

Remove the electrical connector on the sending unit. Use a screwdriver or pick to slide the red locking tab out, then depress the tab and the connector will release.

- Flathead Screwdriver or Precision Pick



STEP 7

Slide the locking tab at the bottom of the fuel line connectors out. Be gentle as these connectors can become brittle with age.



STEP 8

Now that the locking tabs are slide out, depress the upper tab, push down on the connector, then pull up. The connector should release. These connectors can sometimes be the hardest part of the install.



STEP 9

Now the tank is completely disconnected from the vehicle and can be lowered from the vehicle. Ensure the tank is still properly supported as remaining fuel can slosh and cause the tank to move.

- Transmission or Floor Jack



STEP 10

Clean the area around the fuel sending unit to prevent debris from getting into the tank when removing the sending unit. Now use a hammer and flathead screwdriver to remove the OEM sending unit. Position the screwdriver on a locking ring tab and hammer the unit counter clockwise. Once the locking ring is released, remove the sending unit.



STEP 11

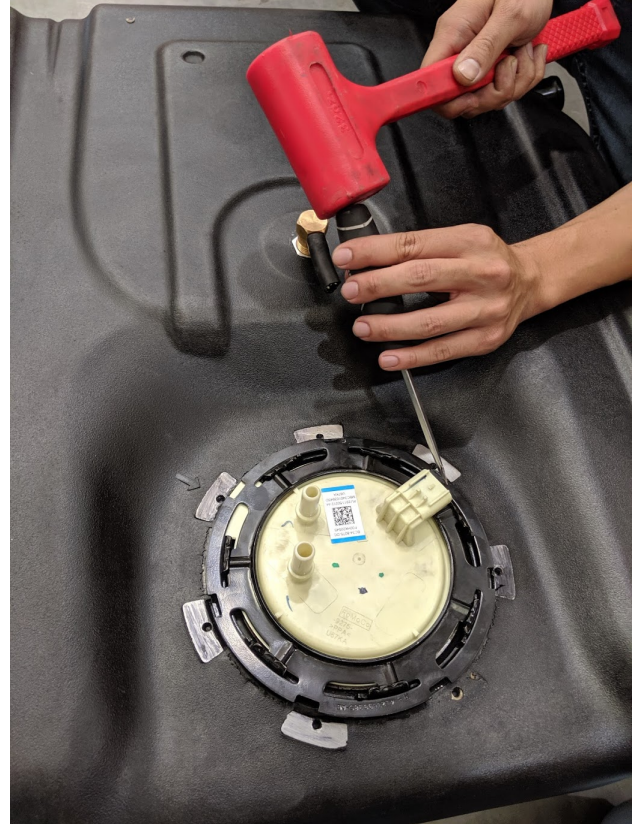
Place the S&B O ring into the groove on your S&B Tank.



STEP 12

Now place your OEM sending unit in the S&B Tank. Make sure the knob on the sending unit is pointing towards the arrow molded into your S&B Tank. Be careful to not bend the float when installing the sending unit. Place the OEM locking ring on and hammer it clockwise.

- Mallet
- Flathead Screwdriver



STEP 13

Make sure you rotate the locking ring until the rib on the OEM locking ring is fully seated into the indentation on the S&B receiving ring.



STEP 14

On the OEM fuel tank, use a 19 metric socket to 2 strap bolts which hold the stock fuel tank into the skid plate.

- 19mm Deep Socket
- Ratchet



STEP 15

Remove the OEM tank from the skid plate. You may have to pry to get the OEM tank to pop out of the skid plate.

Optional Tools

- Pry Bar



STEP 16

Place the S&B Tank in the OEM skid plate, reassemble the straps using a 19mm socket.

- 19mm Deep Socket
- Ratchet



STEP 17

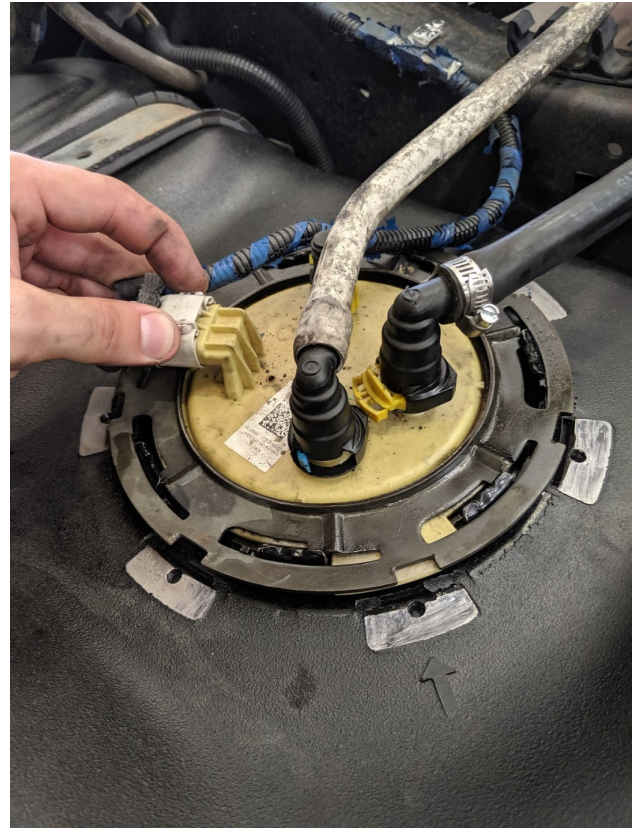
Position the S&B Tank on a jack and raise the tank until you are able to reconnect sending unit connections. Ensure the vent lines are positioned through the frame properly.

- Floor or Transmission Jack



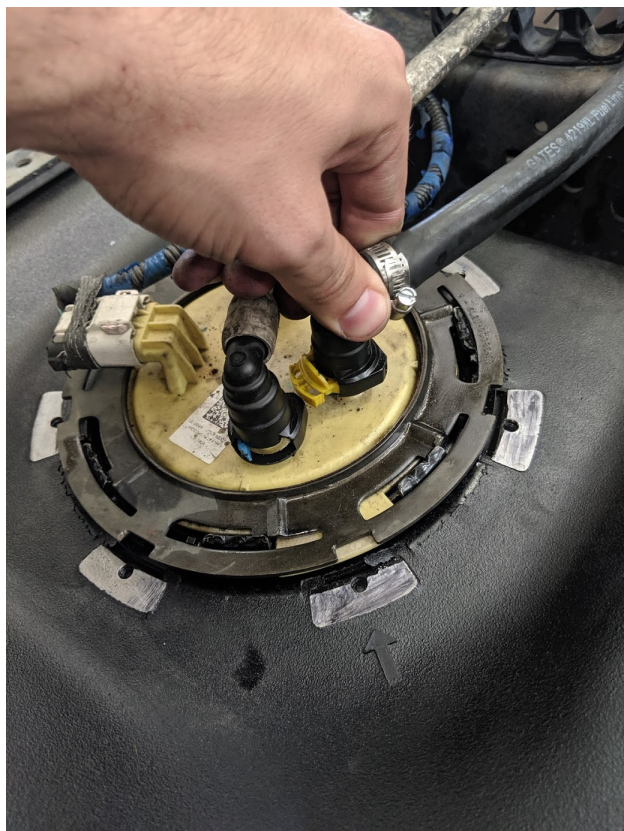
STEP 18

Reconnect the electrical connector on the sending unit. Slide the red locking tab back into the locked position.



STEP 19

Reconnect the fuel line connectors by pushing down until they are fully seated. Push the fuel connector locking tabs back in once the connectors are fully seated.



STEP 21

Slide the vent hoses onto your S&B Tank and use a flathead screwdriver to tighten hose clamps.

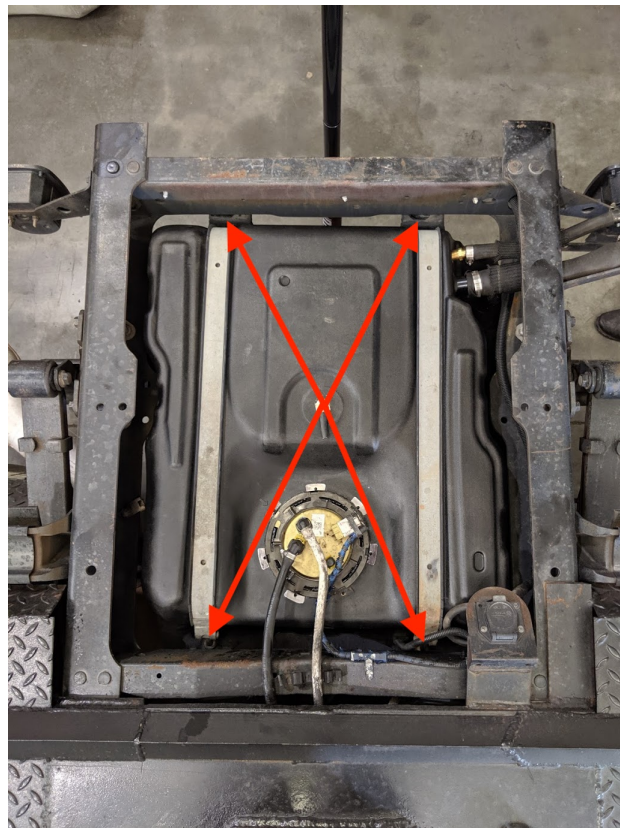
- Flathead Screwdriver or Nut Driver



STEP 20

With a 15 metric socket, reinstall the 4 bolts that hold the fuel tank skid plate assembly to the truck frame. Hand torque the bolts to make sure all 4 bolts are tight.

- 15mm Socket
- Ratchet



INSTALLATION COMPLETE

If you have had any questions, please call or text us at (909)675-1313. If you installed your S&B Tank because of de-lamination issues, we recommend cleaning your fuel system and not re using any of the fuel from your previous tank. Thank you for purchasing an S&B Tank.

