

FILTERS **COLD AIR INTAKE**

INSTALLATION INSTRUCTIONS:

P/N: 75-5106 / 75-5106D





FILTERS

BREATHE EASY. YOUR ENGINE & WARRANTY ARE PROTECTED.™

Thank You! for purchasing your new S&B Filters intake kit. If at any time you need additional assistance with installation or have any other questions or comments, feel free to call our customer service department at 909-947-0015. You can also take advantage of our live chat at www.sbfilters.com and connect with an S&B representative immediately. We hope you enjoy your new S&B Filters product and thank you for your continued support. Breathe Easy. Your Engine and Warranty Are Protected.

VEHICLE APPLICATION:

YEAR: 2009 - 2017

MAKE: RAM

MODEL: 1500/2500/3500

ENGINE: 5.7L Hemi

APPROX. INSTALL TIME: 1HRS | 30MIN

TOOLS REQUIRED:

- 8mm, 10mm, 11mm, 13mm Wrench/Socket
- 5/16" Nut Driver or Flat Blade Screwdriver
- Phillips Screwdriver
- Panel Popper

NOTES:

Kit may not fit with the following Aftermarket Parts installed:

- Body Lift or Lowering Kit
- Custom Hood
- Throttle Body Spacer/ Upgrade

CARB STATUS - EXEMPT

Product will be submitted to Air Resources Board for approval shortly.

Not Legal for use in CA or other states adopting CA emissions standards"
See Page 2 for more info.

S&B FILTER MAINTENANCE:

- Cleanable (KF-1056). If the enclosed filter is Red, it came preoiled from our factory. Please visit www.sbfilters.com for exact oil amount required after cleaning.
- Disposable (KF-1056D). If the enclosed filter is White, it is a disposable filter and should be discarded once it reaches capacity. This filter **(does not require oil)**. For more info on S&B's disposable filter, visit www.sbfilters.com.

BEFORE YOU START

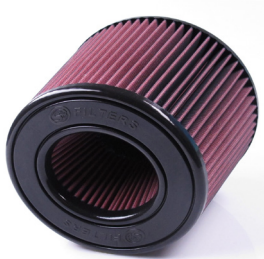
- Please read the entire product guide before proceeding.
- Ensure all components listed on pages 3 & 4 are present.
- If you are missing any of the components, call our customer support at (909) 947-0015.
- Do not work on your vehicle while engine is hot.
- Make sure the engine is turned off and the vehicle is in Park or the Parking Brake is set.

RELATED ITEMS FOR YOUR PURCHASE

Order Online today at www.sbfilters.com or through your local S&B distributor.



Filter Wrap
SKU# WF-1034



**Replacement
Cotton Filter**
SKU# KF-1056



**Replacement
Dry Filter**
SKU# KF-1056D



**Precision II:
Cleaning & Oil Kit**
SKU# 88-0008

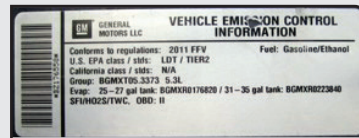
Air Box Plug Testing

Stock air boxes are a significant contributor to poor air flow which is why S&B designs custom air boxes with secondary and/or enlarged openings. With that said, S&B recognizes the benefits of cooler air, so we have included a plug to seal off the opening if so desired. For optimal performance, we recommend that the intake be used without the end cap except in conditions of extreme heat.

Performance Testing

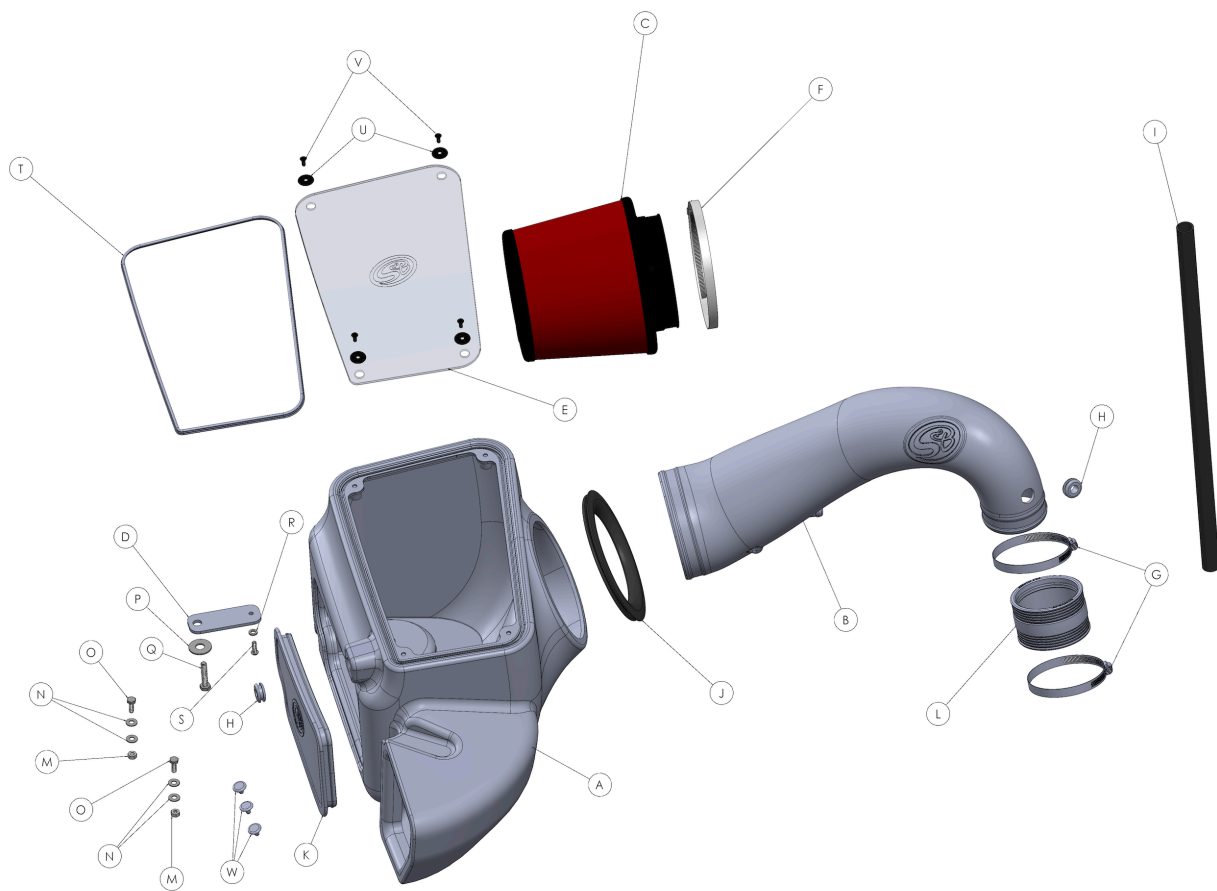
- Engage parking brake and start your engine. Listen for abnormal noises. If an air leak is detected, re-inspect hoses and connections as they may need to be repositioned and tightened.
- S&B FILTERS recommends that you keep your OE intake system in the event it is required in the future.
- In order to maintain your warranty, all connections and components must be checked periodically for alignment and for proper tension on all connections. Failure to do so may void your warranty.
- Use only S&B FILTERS cleaning and oil products to service your filter. Using any other brand oil and/or cleaners on your S&B air filter may void your warranty.

Warning! If your vehicle has a Vehicle Emission Control Information decal affixed to the factory airbox, a new replacement label must be obtained and installed in a readily visible position in the engine compartment in order to remain CARB compliant. Failure to do so will prevent the vehicle from passing a smog check. Replacement labels can be ordered from your local dealership. Regulations state that the VECI label shall not be affixed to any equipment which is easily detached from the vehicle. Label placement, under the hood on a painted surface is recommended.



Emissions Standard The California Air Resource Board (CARB) requires that an E.O. Identification label be applied to the vehicle in order to pass a smog check inspection when a Performance Intake Kit has been installed. You must place the E.O. Label provided on or near the intake kit after installation so that a smog check technician can easily verify the E.O. Number. As of April 2009, S&B has never had a product where CARB denied an exemption request; however, the exemption process with CARB can take as long as 18 months. Check the status of the exemption process by looking up a specific part number at www.sbfilters.com. The CARB Exemption number and/or status is listed under the Product Details section for each part number. If the status shows as "Pending," CARB has yet to issue an exemption but the product has been submitted. Products that have not been issued an E.O. number are street legal in most states, but may not be used on emission controlled vehicles in the state of California and are for off road use only. If you purchased your kit from S&B Filters directly, we will automatically mail you your Exemption Sticker when it is issued to us. If you purchased your kit from an authorized S&B Filters Dealer, log onto our web site and register to receive your Exemption Sticker.

EXPLODED VIEW:



PARTS LIST: 75-5106/75-5106D

ITEM	QTY	DESCRIPTION	PART NUMBER
A	1	AIR BOX	AL1309B-00
B	1	INTAKE TUBE	AL1309-00
C	1	AIR FILTER	KF-1056
D	1	MOUNTING BRACKET	AI2009-00
E	1	CLEAR LID	AI2008-00
F	1	HOSE CLAMP, #104	AG1012-00
G	2	HOSE CLAMP, #56	AG1008-00
H	2	GROMMET	AI1563-00
I	1	CCV HOSE	AI1040-06
J	1	TUBE SEAL	AI1972C-00
K	1	BOX PLUG	AI1947C-00
L	1	COUPLER	AI1678C-00
M	2	LOCKNUT, NYLOCK, 1/4-20	AI1074-00
N	4	WASHER, FLAT, 1/4	AI1073-00
O	2	SCREW, HEX, 1/4-20	AI1068-00
P	1	WASHER, FENDER, 1-1/4	AI1080-00
Q	1	SCREW, HEX, M8	AI1163-00
R	1	WASHER, M6	AI1755-00
S	1	FLANGE BOLT, HEX, M6	AI2014-00
T	1	LID SEAL	AI1766-06
U	4	WASHER, #10-24	AI2006-00
V	4	SCREW, #10-24	AI2005-00
W	3	PANEL RETAINER PIN	AI1567-00
ITEMS NOT SHOWN IN THE EXPLODED VIEW			
X	3	ZIP TIES	AI1750-00

AM0352-00 REV-E 08/08/2018

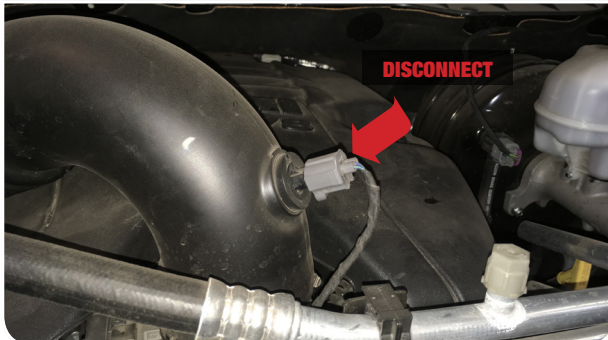
HARDWARE PACKS
HP1507-00
AG1008-00
HP1295-00
AI2005-00
AI2006-00
HP1246-00
AI1068-00
AI1074-00
AI1073-00
AI1163-00
AI1080-00
AI1563-00
AI1567-00
HP1509-00
AI2009-00
AI1755-00
AI2014-00
HP1508-00
AI2008-00
AI1766-06

INSTALLATION STEPS:

- 1 With the ignition switched off and the parking brake set, disconnect the negative battery cable on the driver side. **Note: Failure to disconnect the battery may cause the CEL to illuminate upon completion of the installation and subsequent operation. Do not skip this step!**
Tool Required: 10mm Socket/Wrench



- 2 Disconnect the electrical harness at the Air Temperature Sensor.



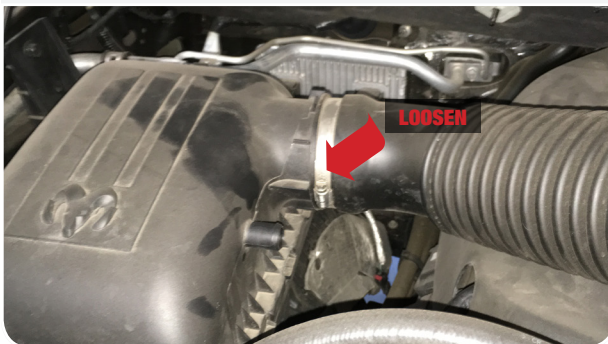
- 3 Disconnect the crank case vent tube from the air box.



- 4 Loosen the clamp at the throttle body.
Tool Required: 5/16" Nut Driver or Flat Blade Screwdriver



- 5 Loosen the clamp connecting the intake tube to the intake box then remove the intake tube from the vehicle.
Tool Required: 5/16" Nut Driver or Flat Blade Screwdriver



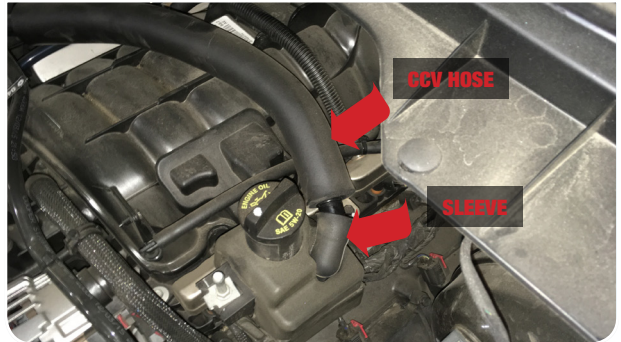
- 6 Lift up on the intake box to unseat the prongs from the grommets then remove the intake box from the vehicle.



- 7** Lift up to remove the engine cover from the vehicle. If necessary remove the oil cap if it gets in the way.



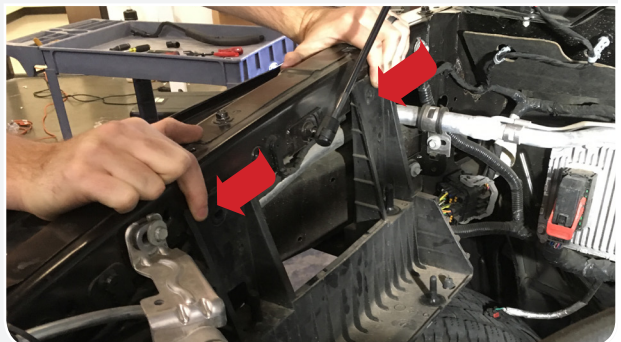
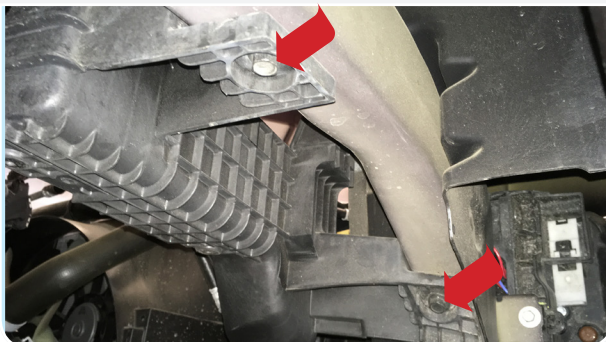
- 8** Remove both the CCV hose and sleeve from the engine side.



- 9** Remove the front passenger side wheel liner. There is a combination of screws and push pins that needs to be removed to take out the wheel liner. Before completely taking out the wheel liner, from inside the engine compartment carefully pull out the plastic tab securing a wiring harness to the wheel liner. Remove the wheel liner from the truck. Set the screws aside, they will be reused in Step 20 when you reinstall the wheel liner.
Tool Required: 8mm Socket/Wrench, Panel Popper

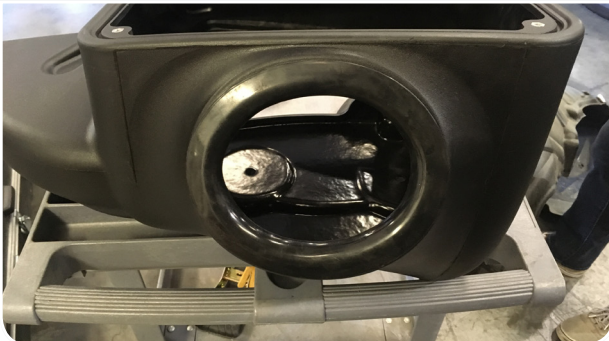


- 10** Remove the four screws then remove the intake box tray from the vehicle. Set one screw aside, it will be reused in Step 18.
Tool Required: 13mm Socket/Wrench



INSTALLATION STEPS:

- 11** Install the Tube Seal (J) onto the Air Box (A).



- 12** Install the Grommet (H) onto the Air Box (A).



- 13** Install the Mounting Bracket (D) onto the Air Box (A) with the M6 Flange Bolt (S).
Tool Required: 10mm Socket/Wrench



- 14** Determine if you want to install the Box Plug (K) onto the Air Box (A) or leave it open. See the "Air Box Plug" note on Page 2 for more information. If the Box Plug is desired, simply press the Box Plug into the box opening until it snaps into place.



- 15** Carefully rotate the IAT sensor counter clockwise and remove the sensor from the stock intake tube. Remove the O-Ring from the IAT sensor and install the IAT sensor into the Intake Tube (B) and Grommet (H). The tab on the IAT sensor on should be positioned straight up at 90 degrees.



- 16** Place the Air Box (A) into the vehicle. Line up the fender inlet and mounting holes.



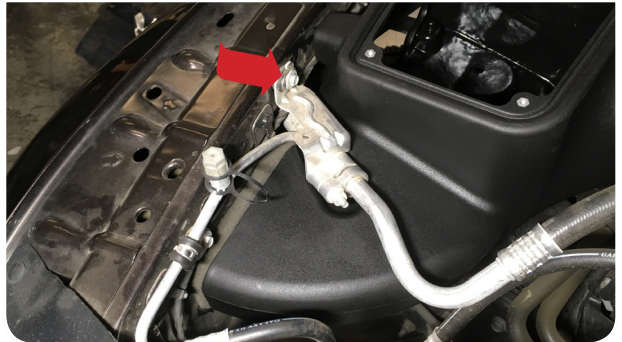
- 18** Install the screw removed in Step 10 to secure the Air Box (A) to the side fender. Do not fully tighten yet.
Tool Required: 13mm Socket/Wrench



- 17** Install the M8 Screw (Q) and Washer (P) through the Mounting Bracket (D) to secure the Air Box (A). Do not fully tighten yet.
Tool Required: 13mm Socket/Wrench



- 19** If needed, move the AC line away from the Air Box (A) and line up the AC line with the cut out on the scoop by loosening the screw on the bracket. Make any final adjustments then fully tightening the mounting screws in Step 17 & 18.
Tool Required: 10mm, 13mm Socket/Wrench



- 20** Reconnect the sensor into the wheel liner from Step 9 and secure the wheel liner with the air box with the 1/4-20 Screws (O), Washers (N), and Locknuts (M). Leave the Screws loose so adjustments can be made while reinstalling the wheel liner. Reinstall the wheel liner and the screws. Use the Panel Retainer Pins (W) to replace any pins broken during the removal process. You will need two 11mm Socket or Wrench to tighten both the screw and locknut.
Tool Required: 11mm Socket/Wrench



INSTALLATION NOTES:

- 21** Install the Coupler (L) and #56 Hose Clamps (G) onto the throttle body. Tighten the hose clamp on the throttle body side only.



- 22** Insert the CCV Hose (I) into the CCV port on the engine side. Zip Tie (X) the CCV Hose to the fuel line on top of the intake manifold to ease the installation of the engine cover in Step 23.



- 23** Reinstall the engine cover and route the other end of the CCV Hose (I) towards the engine cover cutout on the passenger side.



- 24** Place the Air Filter (C) into the Air Box (A). When placing the air filter into the air box, have the filter go in the long edge first.



- 25** If necessary, use some of the provided grease around the Tube Seal (J) so the Intake Tube (B) can go through the tube seal easier. Be careful not to get any of the grease on the Air Filter (C). Feed the Intake Tube (B) into the Air Box (A) then connect the other end of the intake tube into the Coupler (L). Slide the Air Filter (C) onto the Intake Tube (B) and tighten the #56 and #104 Hose Clamps (G & F).



- 26** Insert the CCV Hose (I) onto the bung on the Intake Tube (B).

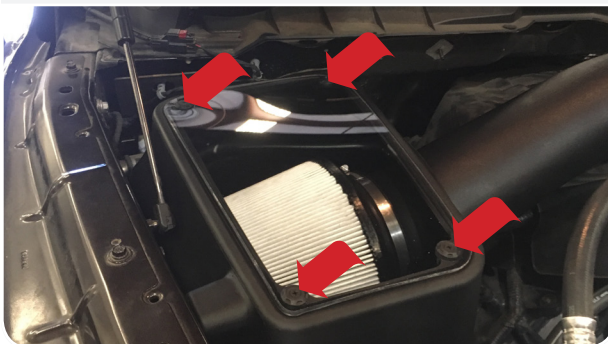


INSTALLATION NOTES:

- 27** Install the Lid Seal (T) into the grooves on top of the Air Box (A).



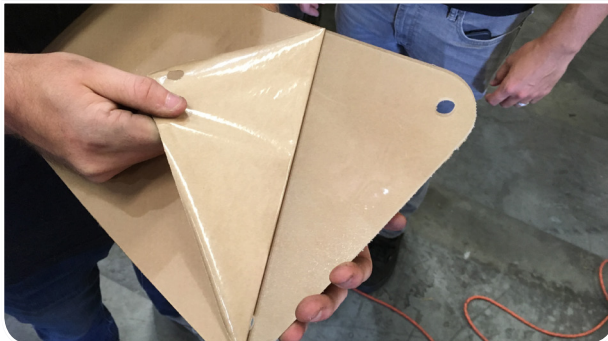
- 29** Place the Clear Lid (G) on top of the Intake Box (A) and secure with the 10-24 Screws (I) and Lid Washers (H).
Tool Required: Phillips Screwdriver



- 31** Reconnect the negative battery cable. Inspect your installation, make sure the kit is properly positioned and all fasteners are secured. Keep all stock parts in case you would ever need to reinstall the stock intake assembly. Affix the ID label near the intake kit. The installation is now complete.
Tool Required: 10mm Socket/Wrench



- 28** Peel off the protective covering on the Clear Lid (E).



- 30** Reconnect the electrical connection back into the IAT sensor.

