



# FILTERS

## COLD AIR INTAKE

### INSTALLATION INSTRUCTIONS:

P/N: 75-5096 / 75-5096D





# FILTERS

**BREATHE EASY. YOUR ENGINE & WARRANTY ARE PROTECTED.™**

**Thank You!** for purchasing your new S&B Filters intake kit. If at any time you need additional assistance with installation or have any other questions or comments, feel free to call our customer service department at 909-947-0015. You can also take advantage of our live chat at [www.sbfilters.com](http://www.sbfilters.com) and connect with an S&B representative immediately. We hope you enjoy your new S&B Filters product and thank you for your continued support. Breathe Easy. Your engine and warranty are protected.

## VEHICLE APPLICATION:

**YEAR:** 2016-18

**MAKE:** Toyota

**MODEL:** Tacoma

**ENGINE:** 3.5L

**APPROX. INSTALL TIME:** 1HRS | 00MIN

### TOOLS REQUIRED:

- 10mm, 12mm Wrench/Socket
- 5/16" Nut Driver or Flat Blade Screwdriver
- Phillips Screwdriver
- Panel Poppers

### NOTES:

Kit may not fit with the following Aftermarket Parts installed:

- Body Lift or Lowering Kit
- Custom Hood
- Throttle Body Spacer/ Upgrade

### CARB STATUS - EXEMPT

Product will be submitted to Air Resources Board for approval shortly.

*Not Legal for use in CA or other states adopting CA emissions standards"  
See Page 4 for more info.*

### S&B FILTER MAINTENANCE:

- Cleanable (KF-1035). If the enclosed filter is Red, it came preoiled from the factory. Please visit [www.sbfilters.com](http://www.sbfilters.com) for exact oil amount required after cleaning.
- Disposable (KF-1035D). If the enclosed filter is White, it is a disposable filter and should be discarded once it reaches capacity. This filter (does not require oil). For more info on S&B's disposable filter, visit [www.sbfilters.com](http://www.sbfilters.com).

### BEFORE YOU START

- Please read the entire product guide before proceeding.
- Ensure all components listed on pages 1 & 2 are present.
- If you are missing any of the components, call our customer support at (909) 947-0015.
- Do not work on your vehicle while engine is hot.
- Make sure the engine is turned off and the vehicle is in Park or the Parking Brake is set.

## RELATED ITEMS FOR YOUR PURCHASE

Order online today at [www.sbfilters.com](http://www.sbfilters.com) or through your local S&B distributor.



Replacement  
Cotton Filter  
SKU# KF-1035



Replacement  
Dry Filter  
SKU# KF-1035D



Precision II:  
Cleaning & Oil Kit  
SKU# 88-0008

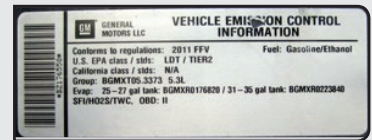
## Air Box Plug Testing

Stock air boxes are a significant contributor to poor air flow which is why S&B designs custom air boxes with secondary and/or enlarged openings. With that said, S&B recognizes the benefits of cooler air, so we have included a plug to seal off the opening if so desired. For optimal performance, we recommend that the intake be used without the end cap except in conditions of extreme heatwave.

## Performance Testing

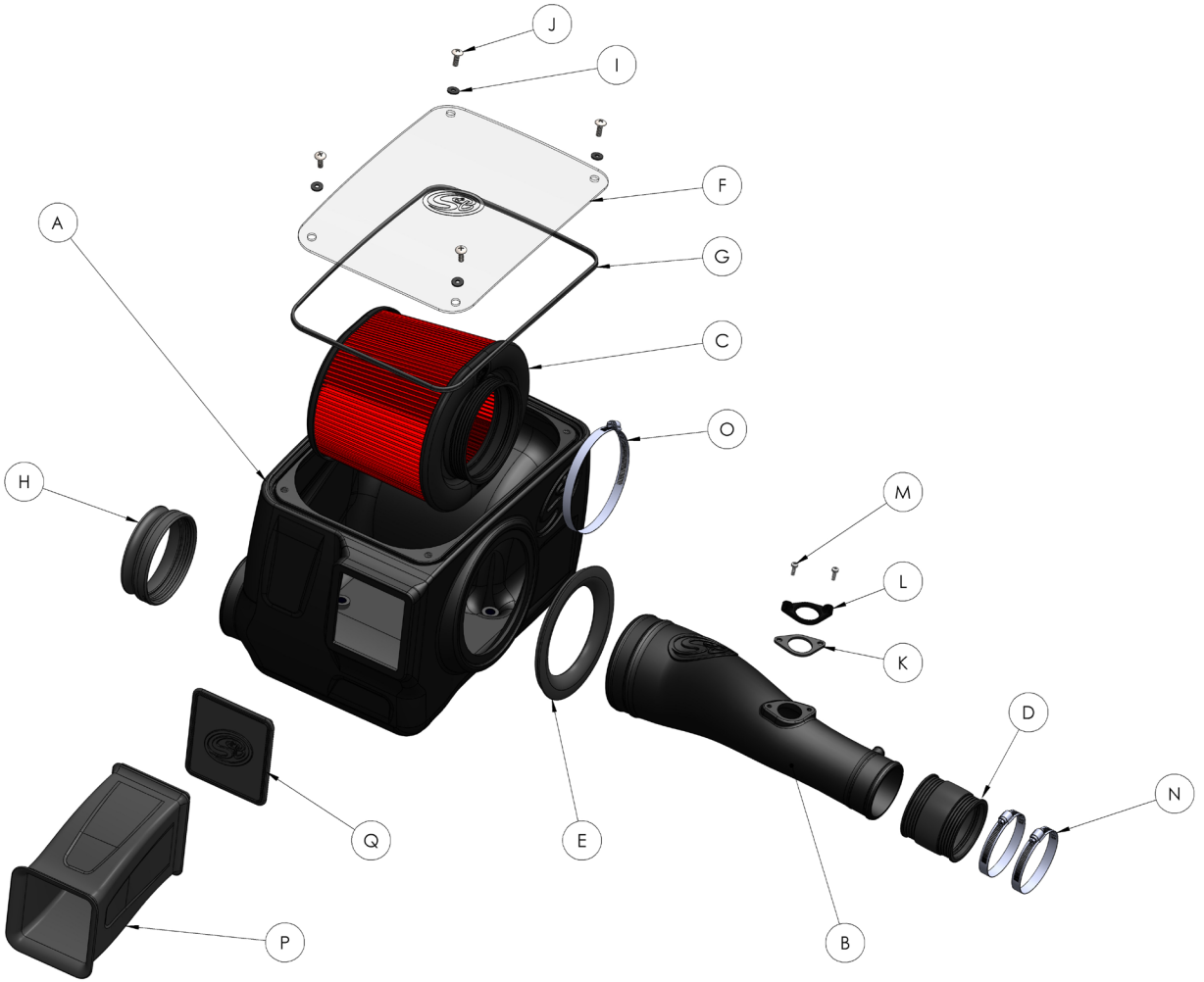
- Engage parking brake and start your engine. Listen for abnormal noises. If an air leak is detected, re-inspect hoses and connections as they may need to be repositioned and tightened.
- S&B FILTERS recommends that you keep your OE intake system in the event it is required in the future.
- In order to maintain your warranty, all connections and components must be checked periodically for alignment and for proper tension on all connections. Failure to do so may void your warranty.
- Use only S&B FILTERS cleaning and oil products to service your filter. Using any other brand oil and or cleaners on your S&B air filter may void your warranty.

**Warning!** If your vehicle has a Vehicle Emission Control Information decal affixed to the factory airbox, a new replacement label must be obtained and installed in a readily visible position in the engine compartment in order to remain CARB compliant. Failure to do so will prevent the vehicle from passing a smog check. Replacement labels can be ordered from your local dealership. Regulations state that the VECL label shall not be affixed to any equipment which is easily detached from the vehicle. Label placement, under the hood on a painted surface is recommended.



**Emissions Standard** The California Air Resource Board (CARB) requires that an E.O. identification label be applied to the vehicle in order to pass a smog check inspection when a Performance Intake Kit has been installed. You must place the E.O. label provided on or near the intake kit after installation so that a smog check technician can easily verify the E.O. number. As of April 2009, S&B has never had a product where CARB denied an exemption request; however, the exemption process with CARB can take as long as 18 months. Check the status of the exemption process by looking up a specific part number at [www.sbfilters.com](http://www.sbfilters.com). The CARB Exemption number and/or status is listed under the Product Details section for each part number. If the status shows as "Pending," CARB has yet to issue an exemption but the product has been submitted. Products that have not been issued an EO number are street legal in most states, but may not be used on emission controlled vehicles in the state of California and are for off road use only. If you purchased your kit from S&B Filters directly, we will automatically mail you your Exemption Sticker when it is issued to us. If you purchased your kit from an authorized S&B Filters Dealer, log onto our web site and register to receive your Exemption Sticker.

**EXPLODED VIEW:**



# PARTS LIST: 75-5096/75-5096D

ITEM	QTY	DESCRIPTION	PART NUMBER
A	1	AIR BOX	AL1278B-00
B	1	INTAKE TUBE	AL1278-00
C	1	AIR FILTER	KF-1035
D	1	COUPLER	AI1806C-00
E	1	TUBE SEAL	AI1717C-00
F	1	CLEAR LID	AI1890-00
G	1	LID SEAL	AI1766-05
H	1	FENDER SEAL	AI1859C-00
I	4	WASHER, SEALING	AI1571-00
J	4	SCREW, TRUSS, 1/4-20 X 3/4"	AI1684-00
K	1	MAF GASKET	AI1861-00
L	1	MAF PLATE	AI1860-00
M	2	SCREW, 8-32 X 3/4"	AI1252-00
N	2	HOSE CLAMP, #52	AG1007-00
O	1	HOSE CLAMP, #88	AG1011-00
P	1	AIR BOX SCOOP	AI1891C-00
Q	1	AIR BOX PLUG	AI1892C-00

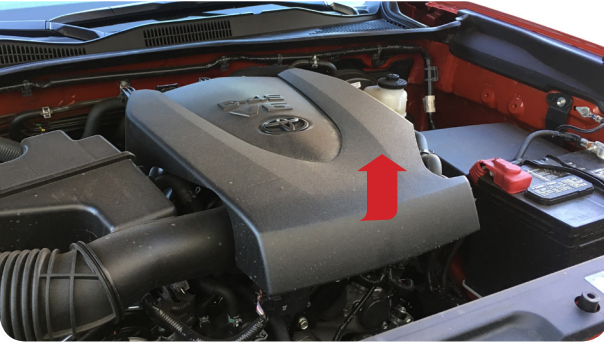
AM10329-00 REV-D 06/15/2018

HARDWARE PACKS
HP1457-00
AG-1019
HP1452-00
AI1860-00
AI1861-00
AI1252-00
HP1403-00
AI1684-00
AI1571-00
HP1458-00
AI1890-00
AI1766-05

## INSTALLATION STEPS:



- 2** Lift the engine cover and remove it from the vehicle.



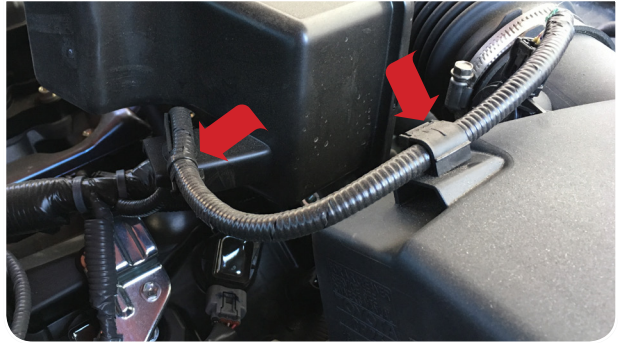
- 4** Disconnect the MAF harness from the sensor.



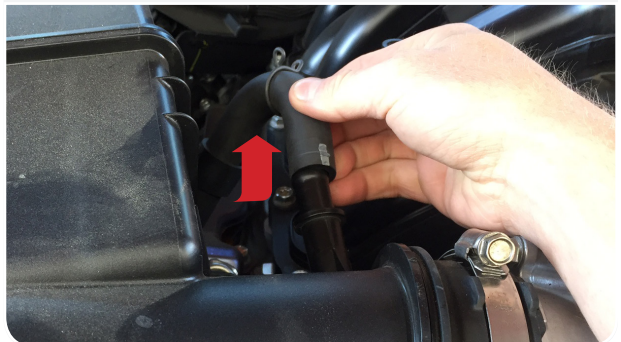
- 1** With the ignition switched off and the parking brake set, disconnect the negative battery cable on the passenger's side with a 10mm Socket/Wrench.



- 3** Unfasten the MAF harness wire from the clip on the air box lid and pop out the clip on the resonator.

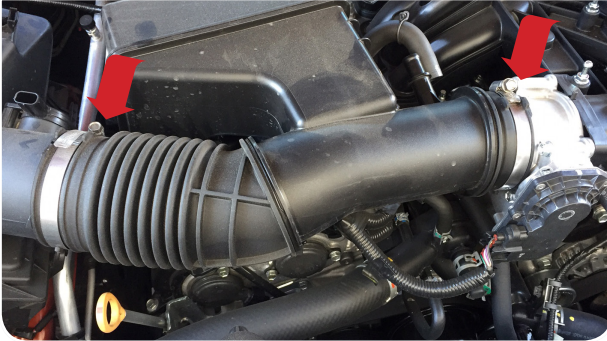


- 5** Disconnect the CCV hose from the stock intake tube. Squeeze the hose clamp and pull out.

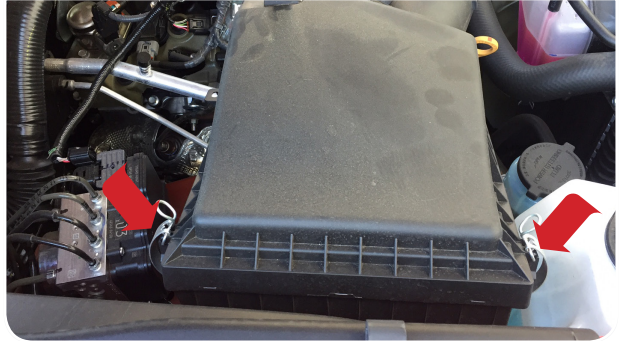


## INSTALLATION STEPS:

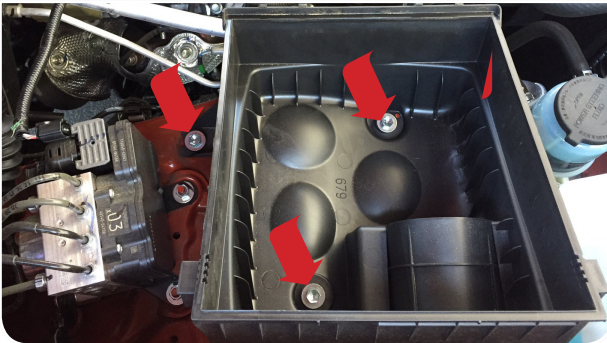
- 6** Loosen the hose clamp by the throttle body and stock air box with a 10mm Socket/Wrench and remove stock intake tube from the vehicle.



- 7** Unfastening the two clips securing the stock air box lid. Remove the stock air box lid and filter.



- 8** Remove the three screws securing the stock air box with a 12mm Socket/Wrench. These screws will be reused in Step 16.



- 9** Carefully remove the MAF sensor from the stock intake tube and install it onto the Intake Tube (B) with the supplied 8-32 Screws (M), MAF Plate (L), MAF Gasket (K) with a Screwdriver.



- 10** Remove the grommet and metal bushing from the stock air box. Removing the metal bushing first will help removing the grommet easier.



- 11** Install the grommet into Air Box (A) first and then the metal bushing.



## INSTALLATION STEPS:

**12** Install the Tube Seal (E) onto the Air Box (A).



**13** Install the Fender Seal (H) onto the Air Box (A).



**14** Determine if you want to install the Auxiliary Scoop (P) or Box Plug (Q) on the Air Box (A). See the "Air Box Plug" note in Page 2 to decide the desired setup



**15** Place Air Box (A) into the truck.



**16** Use the screws removed in Step 8 and secure the Air Box (A) with a 12mm Socket/Wrench.



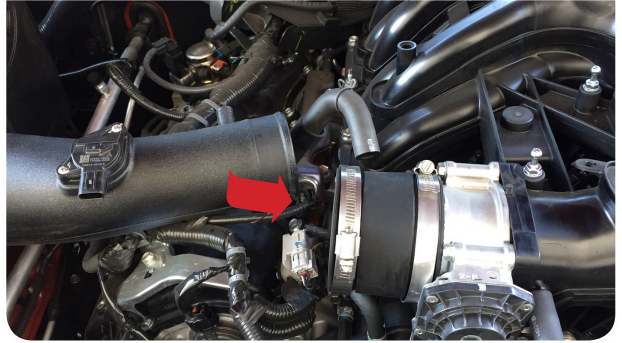


## INSTALLATION STEPS:

**17** Insert the Intake Tube (B) into the Air Box (A).



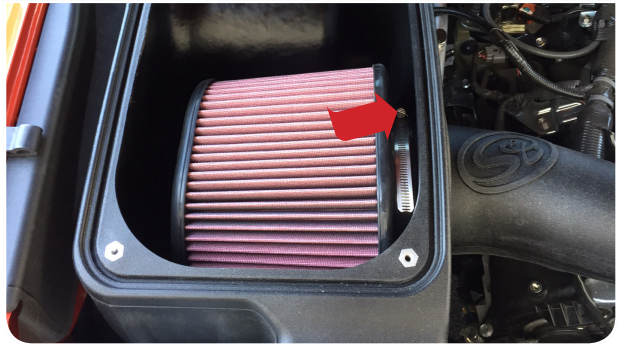
**18** Install the Coupler (D) onto the throttle body with two #52 Hose Clamps (N) then insert the Intake Tube (B) into the coupler. Tighten all hose clamps.



**19** Reconnect the CCV hose and hose clamp into the CCV vent on the Intake Tube (B).



**20** Install the Air Filter (C) onto the Intake Tube (B) and tighten the #88 Hose Clamp (O).



**21** Press the Lid Seal (G) into the grooves on top of the Air Box (A).



**22** Remove the protective covering on the Clear Lid (F) then install the clear lid onto the Air Box (A) with the 1/4-20 Screws (J) and Washers (I) using a Screwdriver.



## INSTALLATION STEPS:

**23** Reconnect the MAF harness into the sensor.



**24** Reinstall the engine cover.



**25** Reconnect the negative terminal on the battery. Inspect your installation, make sure the kit is properly positioned and all fasteners are secure. Affix the ID label near the intake kit. The installation is now complete.

