



FILTERS

COLD AIR INTAKE

INSTALLATION INSTRUCTIONS:

P/N: 75-5095 / 75-5095D





FILTERS

BREATHE EASY. YOUR ENGINE & WARRANTY ARE PROTECTED.™

Thank You! for purchasing your new S&B Filters intake kit. If at any time you need additional assistance with installation or have any other questions or comments, feel free to call our customer service department at 909-947-0015. You can also take advantage of our live chat at www.sbfilters.com and connect with an S&B representative immediately. We hope you enjoy your new S&B Filters product and thank you for your continued support. Breathe Easy. Your Engine and Warranty Are Protected.

VEHICLE APPLICATION:

YEAR: 2005 - 2011

MAKE: Toyota

MODEL: Tacoma

ENGINE: 4.0L

APPROX. INSTALL TIME: 1HRS | 00MIN

TOOLS REQUIRED:

- 8mm, 10mm, 12mm Wrench/Socket
- Phillips Screwdriver
- Adjustable Wrench
- Panel Removal Tool
- Pliers

NOTES:

Kit may not fit with the following Aftermarket Parts installed:

- Body Lift or Lowering Kit
- Custom Hood
- Throttle Body Spacer/ Upgrade

CARB STATUS - PENDING

Product will be submitted to Air Resources Board for approval shortly.

Not Legal for use in CA or other states adopting CA emissions standards"
See Page 2 for more info.

S&B FILTER MAINTENANCE:

- Cleanable (KF-1053). If the enclosed filter is Red, it came preoiled from the factory. Please visit www.sbfilters.com for exact oil amount required after cleaning.
- Disposable (KF-1053D). If the enclosed filter is White, it is a disposable filter and should be discarded once it reaches capacity. This filter **does not require oil**. For more info on S&B's disposable filter, visit www.sbfilters.com.

BEFORE YOU START

- Please read the entire product guide before proceeding.
- Ensure all components listed on pages 3 & 4 are present.
- If you are missing any of the components, call our customer support at (909) 947-0015.
- Do not work on your vehicle while engine is hot.
- Make sure the engine is turned off and the vehicle is in Park or the Parking Brake is set.

RELATED ITEMS FOR YOUR PURCHASE

Order Online today at www.sbfilters.com or through your local S&B distributor.



Replacement
Cotton Filter
SKU# KF-1053



Replacement
Dry Filter
SKU# KF-1053D

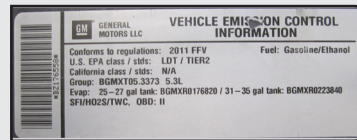


Precision II:
Cleaning & Oil Kit
SKU# 88-0008

Performance Testing

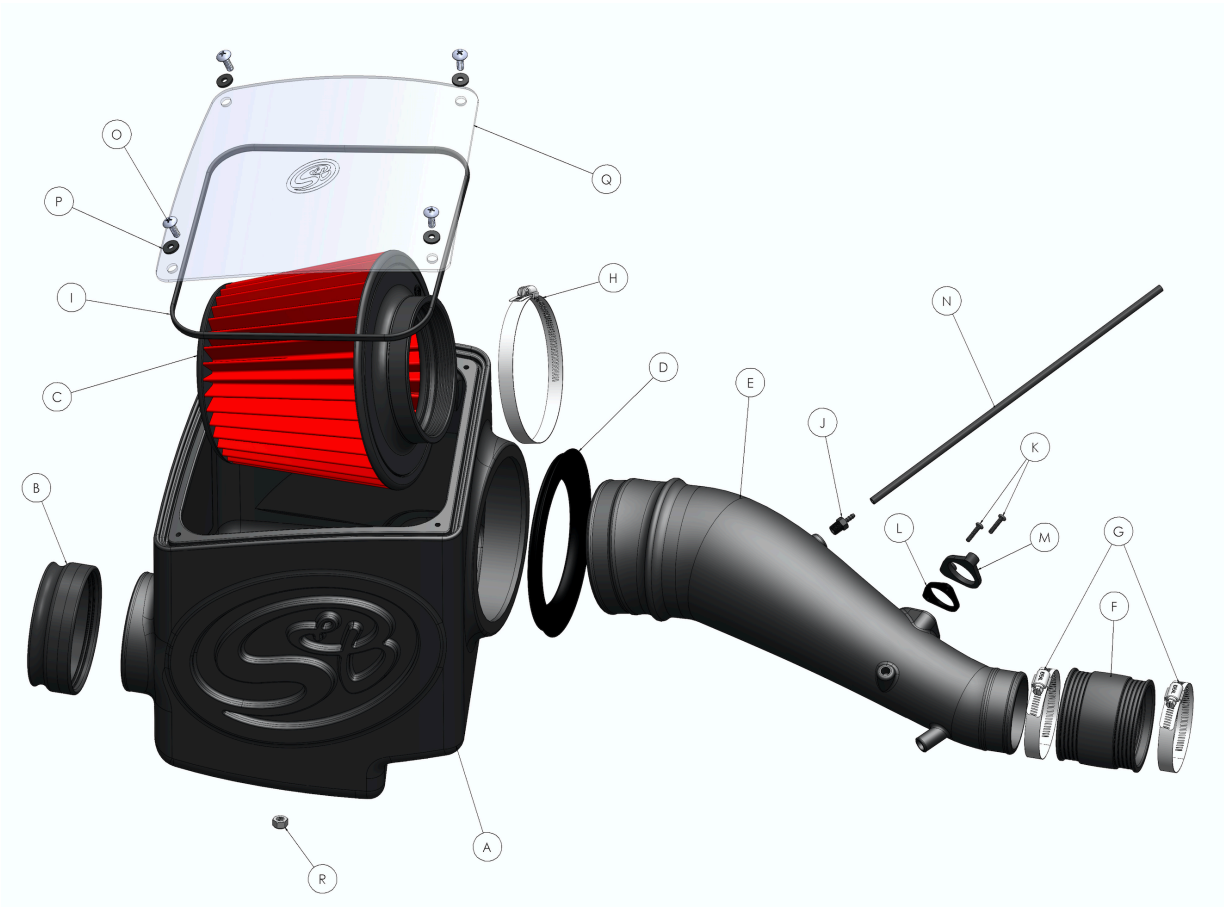
- Engage parking brake and start your engine. Listen for abnormal noises. If an air leak is detected, re-inspect hoses and connections as they may need to be repositioned and tightened.
- S&B FILTERS recommends that you keep your OE intake system in the event it is required in the future.
- In order to maintain your warranty, all connections and components must be checked periodically for alignment and for proper tension on all connections. Failure to do so may void your warranty.
- Use only S&B FILTERS cleaning and oil products to service your filter. Using any other brand oil and/or cleaners on your S&B air filter may void your warranty.

Warning! If your vehicle has a Vehicle Emission Control Information decal affixed to the factory airbox, a new replacement label must be obtained and installed in a readily visible position in the engine compartment in order to remain CARB compliant. Failure to do so will prevent the vehicle from passing a smog check. Replacement labels can be ordered from your local dealership. Regulations state that the VECI label shall not be affixed to any equipment which is easily detached from the vehicle. Label placement, under the hood on a painted surface is recommended.



Emissions Standard The California Air Resource Board (CARB) requires that an E.O. Identification label be applied to the vehicle in order to pass a smog check inspection when a Performance Intake Kit has been installed. You must place the E.O. Label provided on or near the intake kit after installation so that a smog check technician can easily verify the E.O. Number. The exemption process with CARB can take as long as 18 months. Check the status of the exemption process by looking up a specific part number at www.sbfilters.com. The CARB Exemption number and/or status is listed under the Product Details section for each part number. If the status shows as "Pending," CARB has yet to issue an exemption but the product has been submitted. Products that have not been issued an E.O. number are street legal in most states, but may not be used on emission controlled vehicles in the state of California and are for off road use only. If you purchased your kit from S&B Filters directly, we will automatically mail you your Exemption Sticker when it is issued to us. If you purchased your kit from an authorized S&B Filters Dealer, log onto our web site and register to receive your Exemption Sticker.

EXPLODED VIEW:



PARTS LIST: 75-5095/75-5095D

ITEM	QTY	DESCRIPTION	PART NUMBER
A	1	INTAKE BOX	AL1279B-00
B	1	FENDER SEAL	AI1859C-00
C	1	AIR FILTER	KF-1053
D	1	TUBE SEAL	AI1717C-00
E	1	INTAKE TUBE	AL1279-00
F	1	COUPLER	AI1806C-00
G	2	HOSE CLAMP, #52	AG1007-00
H	1	HOSE CLAMP, #80	AG1010-00
I	1	LID SEAL	AI1766-02
J	1	BARBED HOSE FITTING, 1/8"NPT X 3/16"	AI1857-00
K	2	SCREW, 8/32" X 3/4"	AI1252-00
L	1	MAF GASKET	AI1861-00
M	1	MAF PLATE	AI1860-00
N	1	VACUUM HOSE	AI1934-00
O	4	SCREW, 1/4"-20 X 3/4"	AI1684-00
P	4	WASHER, 1/4"-20	AI1571-00
Q	1	CLEAR LID	AI1862-00
R	1	LOCK NUT, M6 NYLOCK	AI1736-00

AMM0327-00-REV-D 11/06/2018

HARDWARE PACKS
HP1454-00
AG1007-00
HP1452-00
AI1860-00
AI1861-00
AI1252-00
HP1453-00
AI1857-00
AI1736-00
HP1403-00
AI1684-00
AI1571-00
AI1934-01
HP1455-00
AI1862-00
AI1766-02

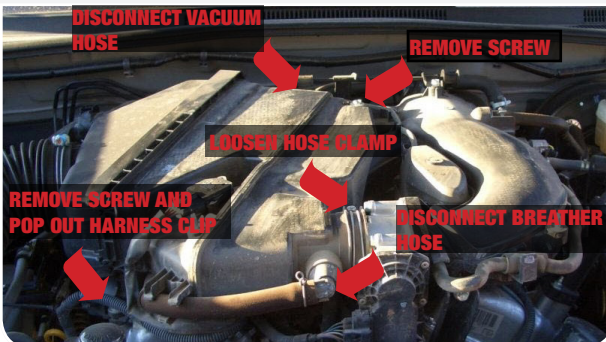
INSTALLATION STEPS:



- 2** Remove the two nuts securing engine cover then lift up and remove the engine cover from the vehicle. Set one of the nut aside, the hardware will be reused in Step 18.
Tool Required: 10mm Socket



- 4** Disconnect the breather and vacuum hose. Remove the two mounting screws on the intake box. Loosen the hose clamp on the throttle body. Pop out the wire harness clip.
Tool Required: 10mm Socket/Wrench, Panel Removal



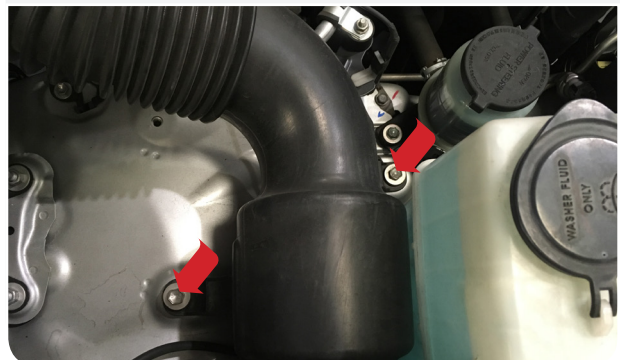
- 1** With the ignition switched off and the parking brake set, disconnect the negative battery cable on the battery. **Note:** Failure to disconnect the battery may cause the CEL to illuminate upon completion of the installation and subsequent operation. Do not skip this step!
Tool Required: 10mm Socket/Wrench



- 3** Disconnect the MAF sensor electrical connector from the sensor.

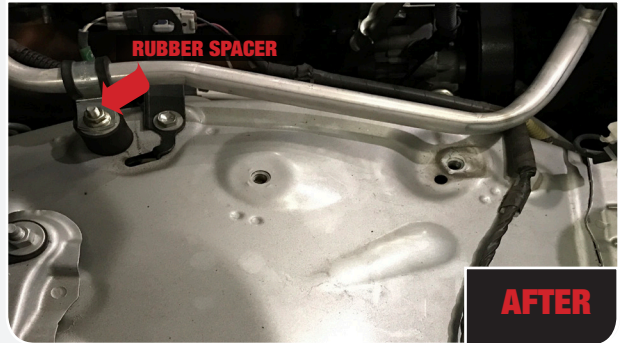
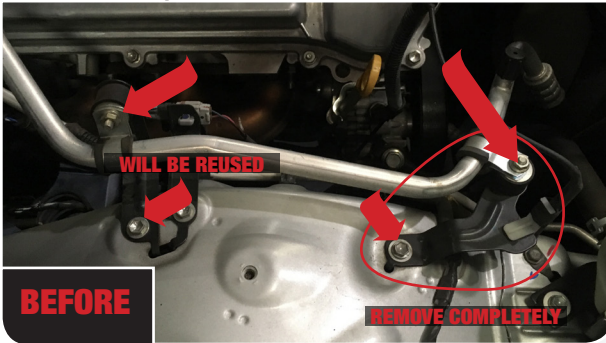


- 5** Remove the two screws securing on the stock tube then remove the entire air intake assembly from the vehicle. The two screws will be reused in Step 11.
Tool Required: 12mm Socket/Wrench



- 6** Remove the two brackets securing the AC line hose clips. Remove the screw mounted to the chassis on each bracket. Only the screw from the left AC line bracket will be reused in Step 18. Remove the lock nuts securing both the rubber spacers to the hose clips. Once everything is removed, install the rubber spacer with the AC line clips into the chassis and tighten with one of the locknuts removed.

Tool Required: 10mm Socket/Wrench



- 7** Pop out the three plastic clips. One of the holes will be used to secure the Intake Box (A) in Step 11.

Tool Required: Panel Removal Tool or Pliers



- 8** Install the Intake Tube Seal (D) onto the Intake Box (A).



- 9** Install the Fender Seal (B) onto the Intake Box (A).



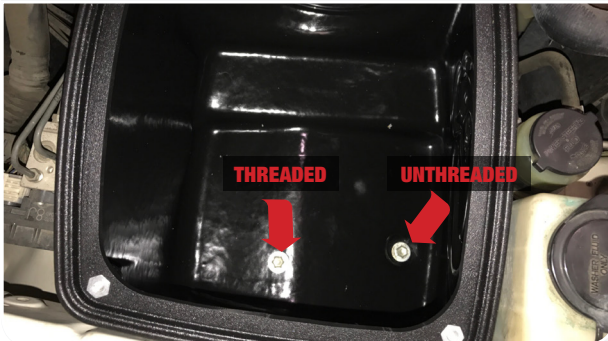
- 10** Place the Intake Box (A) into the truck.



INSTALLATION STEPS:

- 11** Reinstall the stock screws removed from Step 5 to secure the Intake Box (A). Install a M6 Locknut (R) on the bolt with the hole that is not threaded. Make sure that the bolt goes through the hole through the wheel well cover before installing the locknut from underneath the wheel well.

Tool Required: 10mm, 12mm Socket/Wrench



- 12** Carefully remove the MAF sensor from the stock intake tube. Use the supplied 8-32 Screws (K), MAF Plate (M), MAF Gasket (L) to install the sensor onto the Intake Tube (E). Install the Vacuum Hose Barb (J) until finger tight, then turn it one to two complete turns with a wrench. Do not over tighten.

Tool Required: Adjustable Wrench, 8mm Socket/Wrench, Screwdriver



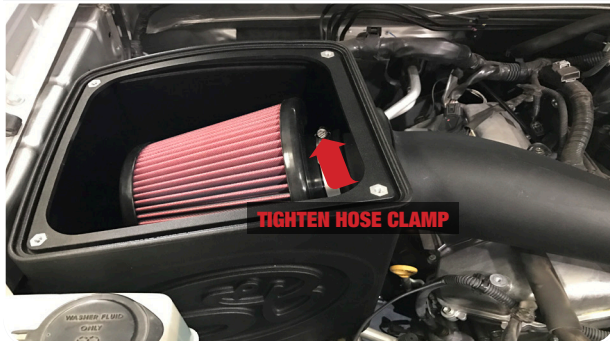
- 13** Install the Coupler (F) and two #52 Hose Clamps (G) onto the intake tube. Leave both hose clamps loose, push coupler up the tube slightly.



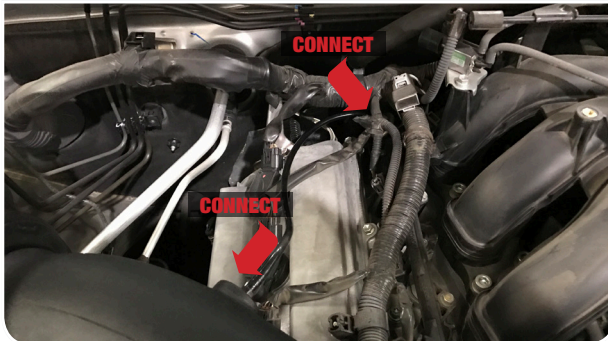
- 14** Place the Air Filter (C) into the Intake Box (A). by first having the filter top facing the front of the vehicle then sliding it in, then turn the filter to the tube outlet. The air filter should be in the same position as shown below when inserting into the intake box.



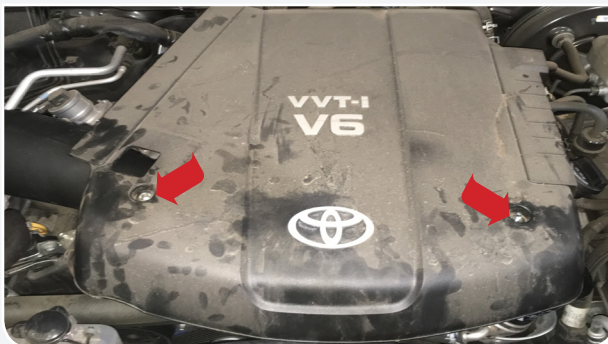
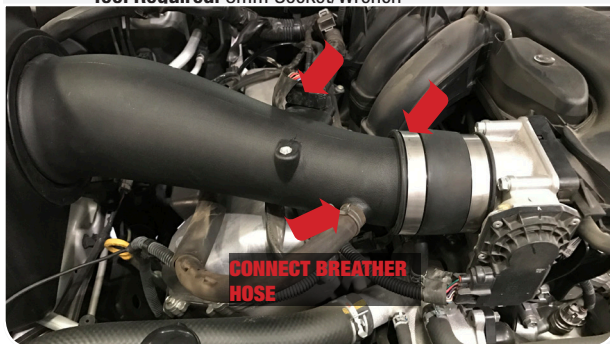
- 15** Insert the Intake Tube (E) through the Tube Seal (D) into the Intake Box (A) then slide the Air Filter (C) onto the intake tube. Tighten the #80 Hose Clamp (H).
Tool Required: 8mm Socket/Wrench



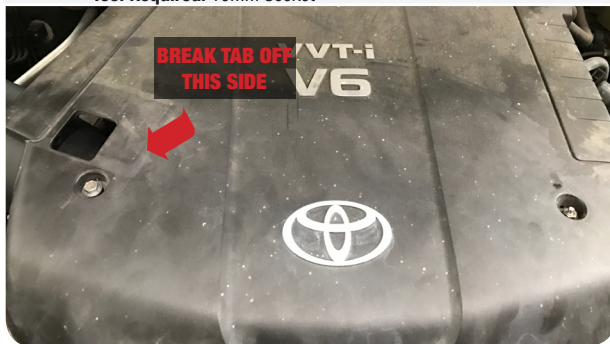
- 16** Remove the stock vacuum hose and use the Vacuum Hose (N) provided to connect the Vacuum Hose Barb (J) and the engine.



- 17** Install the Intake Tube (E) onto the throttle body. Tighten the #52 Hose Clamp (G) at the intake tube only. Leave the hose clamp at the throttle body loose. Reconnect the Breather Hose. Reconnect the MAF sensor connector into the MAF sensor. Cut the electrical tape at the main harness to give the connector extra slack and route the connector underneath the Intake Tube to connect to the sensor. **Note:** If you want to reinstall the engine cover, align the insert on the intake tube with the two mounting points on the engine cover. Make any adjustments for to the intake tube if necessary then tighten the #52 Hose Clamp (G) at the throttle body.
Tool Required: 8mm Socket/Wrench



- 18** (OPTIONAL) Reinstall the engine cover. Reuse the nut removed in Step 2 and screw removed in Step 6. You may have to rotate the tube for the threaded insert to line up properly. **Note:** You will have to break off the small tab on the bottom of the engine cover on the passenger side so the engine cover sits flush with the intake tube.
Tool Required: 10mm Socket



- 19** Press the Lid Seal (I) into the grooves on top of the Air Box (A).



INSTALLATION STEPS:

- 20** Remove the protective covering on the Clear Lid (Q).



- 22** Inspect your installation, make sure the kit is properly positioned and all fasteners are secured. Keep all stock parts in case you would ever need to reinstall the stock intake assembly. Affix the ID label near the intake kit. The installation is now complete.
Tool Required: 10mm Socket/Wrench



- 21** Install Clear Lid (Q) on top of the Air Box (A) with the 1/4-20 Screws (O) and Washers (P).
Tool Required: Screwdriver

