



INSTALLATION INSTRUCTIONS

VEHICLE APPLICATION

Year: **1994 - 2002**
 Make: **Dodge RAM**
 Model: **2500/3500**
 Engine: **5.9L Cummins**

TOOLS REQUIRED

- 10mm, 13mm Wrench/Socket
- 1/4" Wrench/Socket
- 5/16" Nut Driver
- Flat Blade Screwdriver or Panel Popper
- Pliers
- Phillips Screwdriver

S&B FILTER MAINTENANCE

- Cleanable (**KF-1035**). If the enclosed filter is Red, it came pre-oiled from the factory. Please visit www.sbfilters.com for the exact oil amount required after cleaning.
- Disposable (**KF-1035D**). If the enclosed filter is White, it is a disposable filter and should be discarded once it reaches capacity. This filter (**does not require oil**). For more info on S&B's disposable filter, visit www.sbfilters.com.

NOTES

Kit may not fit with the following Aftermarket Parts installed:

- Body Lift or Lowering Kit
- Custom Hood
- Throttle Body Spacer/ Upgrade

CARB STATUS - Pending

Product will be submitted to Air Resources Board for approval shortly.

Not legal for use in CA or other states adopting CA emissions standards See Page 3 for more info.

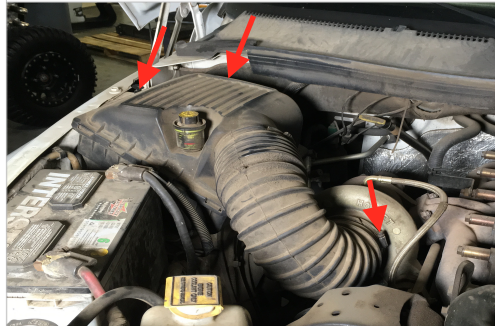
BEFORE YOU START

- Please read the entire product guide before proceeding.
- Ensure all components listed on page 4 are present.
- If you are missing any of the components, call our customer support at (909) 947-0015.
- Do not work on your vehicle while engine is hot.
- Make sure the engine is turned off and the vehicle is in Park or the Parking Brake is set.

1. With the ignition switched off, the parking brake set and engine cooled down, disconnect the negative battery cables on both batteries.



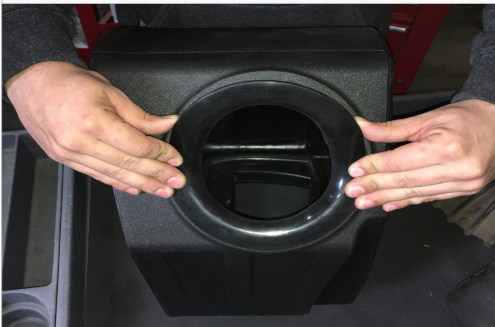
2. Use a Flat Blade Screwdriver or 5/16" Nut Driver to loosen the hose clamp at the turbo inlet. Then unclip the three clips on top of the air box. Remove the stock air box lid, air tube, and filter.



3. Use a 10mm Socket or Wrench to remove the three nuts securing the air box. Then remove the air box and fender inlet from the vehicle.



4. Install the Box Seal (**B**) into the Air Box (**A**) by pressing into position.



5. Install the Fender Seal (**D**) into the Air Box (**A**) by hooking the flange groove onto the air box opening.



6. Place a Rubber Spacer (**K**) over each of the factory threaded studs on the inner fender, then set the Air Box (**A**) in place over the studs.



7. Position the Fender Seal (**D**) up to the fender. Use a 1/4" Socket/Wrench to tighten the 1/4"-20 Locknut (**N**) and Washer (**M**) to secure the Air Box (**A**). If the stud starts to spin, proceed to Step 8 for a solution.



SEE EXPLODED VIEW ON PAGE 4



INSTALLATION INSTRUCTIONS (CONTINUED)

8. (OPTIONAL) If the factory threaded stud starts to spin you will need to remove the front passenger side fender liner to grab the bottom of the stud with pliers. Remove the factory push in pins with a Panel Popper or Flat Blade Screwdriver. The factory pins will most likely break during the process. We have provided Panel Retainer Pins (Q) to replace the broken factory pins during reinstallation. Tighten down the Air Box (A) by using pliers to grab the head of the stud from the bottom and a 1/4" Socket/Wrench on the Locknut, 1/4-20 (N) from the top.



9. Slide the Coupler (F) with Hose Clamp #64 and #72 (H & O) onto the turbo. Tighten Hose Clamp #64 with a Flat Blade Screwdriver or 5/16" Nut Driver. Leave Hose Clamp #72 loose for now.



10. Place the Air Filter (C) into the Air Box (A).



11. Slide one end of the Air Intake Tube (E) into the Air Box (A) and the other end into the Coupler (F). Tighten both Hose Clamp #80 (G) and Hose Clamp #72 (O) with Flat Blade Screwdriver or 5/16" Nut Driver.



12. Press in the Lid Seal (P) into the groove on top of the Air Box (A).



13. Remove the protective covering from the Clear Lid (L) and use a Phillips Screwdriver to tighten the 10-24 Screws (I) and Washers (J) to secure the clear lid to the Air Box (A).



14. (OPTIONAL) Reinstall the fender liner if removed in Step 8. If not proceed to the next step. Push in the Panel Retainer Pin (Q) provided to replace the broken factory pins.



15. Reconnect the negative terminal on both batteries. Inspect your installation, make sure the kit is properly positioned and all fasteners are secure. Affix the CARB and ID label near the intake kit.



SEE EXPLODED VIEW ON PAGE 4

INSTALLATION INSTRUCTIONS (CONTINUED)

RELATED ITEMS FOR YOUR PURCHASE



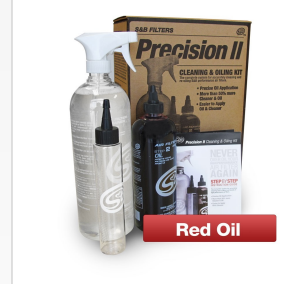
Air Filter Wrap
SKU# WF-1023



Replacement Cotton Filter
SKU# KF-1035



Replacement Dry Filter
SKU# KF-1035D



Precision II: Cleaning & Oil Kit
SKU# 88-0008



Heater Block
SKU# 76-1005



Heater Block
SKU# 76-1007-1

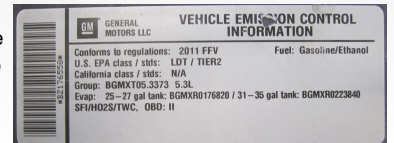
Order online today at www.sbfilters.com or through your local S&B distributor.

PERFORMANCE TESTING

- Engage parking brake and start your engine. Listen for abnormal noises. If an air leak is detected, re-inspect hoses and connections as they may need to be repositioned and tightened.
- S&B FILTERS recommends that you keep your OE intake system in the event it is required in the future.
- In order to maintain your warranty, all connections and components must be checked periodically for alignment and for proper tension on all connections. Failure to do so may void your warranty.
- Use only S&B FILTERS cleaning and oil products to service your filter. Using any other brand oil and or cleaners on your S&B air filter may void your warranty.

WARNING!

If your vehicle has a Vehicle Emission Control Information decal affixed to the factory airbox, a new replacement label must be obtained and installed in a readily visible position in the engine compartment in order to remain CARB compliant. Failure to do so will prevent the vehicle from passing a smog check. Replacement labels can be ordered from your local dealership. Regulations state that the VECI label shall not be affixed to any equipment which is easily detached from the vehicle. Label placement, under the hood on a painted surface is recommended.



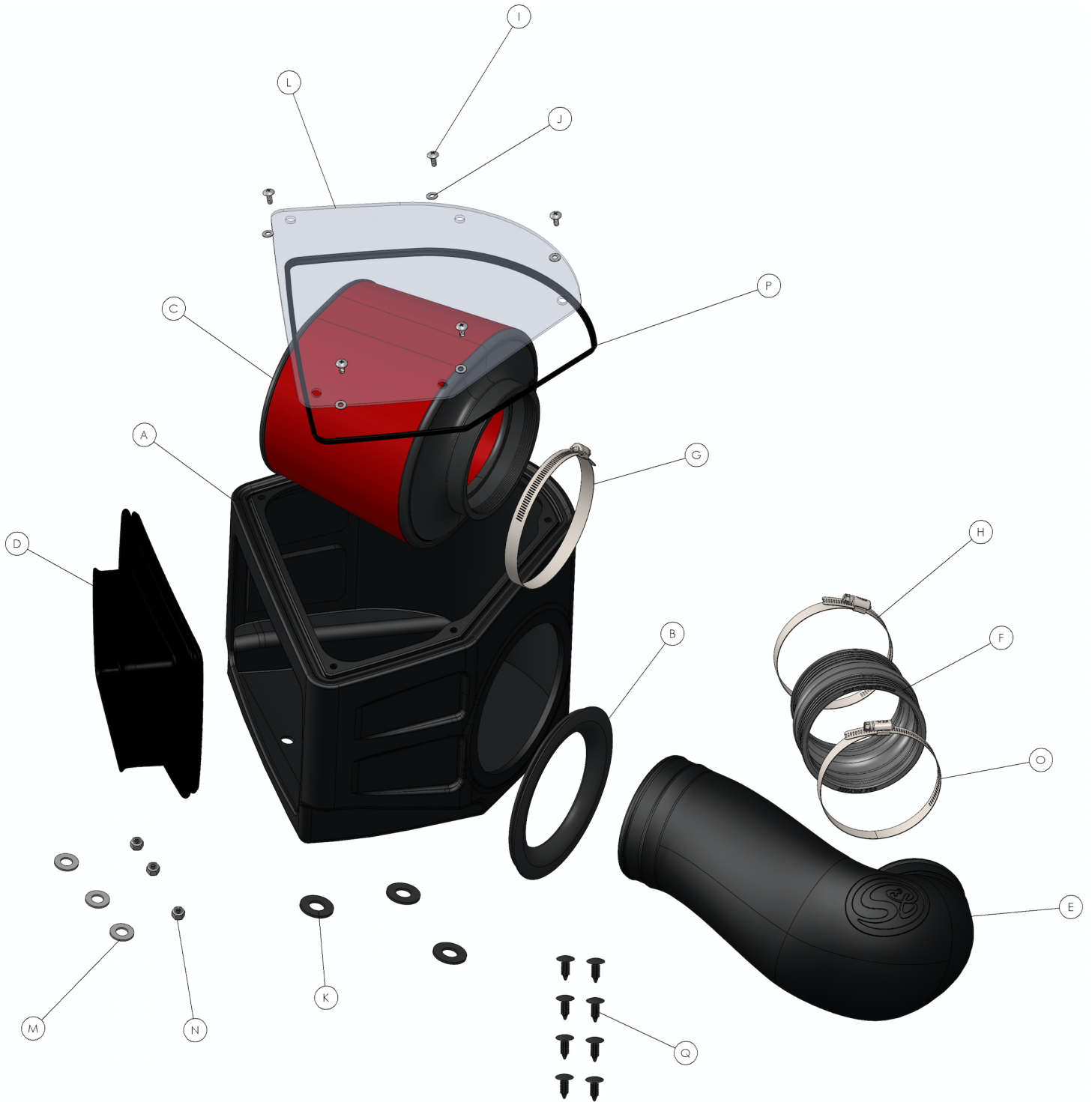
EMISSIONS STANDARD

The California Air Resource Board (CARB) requires that an E.O. identification label be applied to the vehicle in order to pass a smog check inspection when a Performance Intake Kit has been installed. You must place the E.O. label provided on or near the intake kit after installation so that a smog check technician can easily verify the E.O. number. Check the status of the exemption process by looking up a specific part number at www.sbfilters.com. The CARB Exemption number and/or status is listed under the Product Details section for each part number. If the status shows as "Pending," CARB has yet to issue an exemption. Products that have not been issued an EO number are street legal in most states, but may not be used on emission controlled vehicles in the state of California and are for off road use only. If you purchased your kit from S&B Filters directly, we will automatically mail you your Exemption Sticker when it is issued to us. If you purchased your kit from an authorized S&B Filters Dealer, log onto our web site and register to receive your Exemption Sticker.

SEE EXPLODED VIEW ON PAGE 4



EXPLODED VIEW



ITEM	QTY.	DESCRIPTION	P/N	ITEM	QTY.	DESCRIPTION	P/N
A	1	AIR BOX	AL1266B-00	J	5	WASHER, 10-24	AI1272-00
B	1	TUBE SEAL	AI1717C-00	K	3	WASHER, RUBBER, 0.250" ID x 1.00" OD x 0.125"	AI1765-00
C	1	AIR FILTER	KF-1035 or KF-1035D	L	1	CLEAR LID	AI1834-00
D	1	FENDER SEAL	AI1838C-00	M	3	WASHER, FENDER	AI1075-00
E	1	INTAKE TUBE	AL1266-00	N	3	LOCK NUT, 1/4-20	AI1074-00
F	1	COUPLER	AI1378C-00	O	1	HOSE CLAMP, #72	AG1009-00
G	1	HOSE CLAMP #80	AG1010-00	P	1	EDGE TRIM	AI1766-0A
H	1	HOSE CLAMP #64	AG1018-00	Q	8	PANEL RETAINER PIN	AI1567-00
I	5	SCREW, 10-24 x 1/2	AI1287-00				