



FILTERS

COLD AIR INTAKE

INSTALLATION INSTRUCTIONS:

P/N: 75-5087 / 75-5087D





FILTERS

BREATHE EASY. YOUR ENGINE & WARRANTY ARE PROTECTED.™

Thank You! for purchasing your new S&B Filters intake kit. If at any time you need additional assistance with installation or have any other questions or comments, feel free to call our customer service department at 909-947-0015. You can also take advantage of our live chat at www.sbfilters.com and connect with an S&B representative immediately. We hope you enjoy your new S&B Filters product and thank you for your continued support. Breathe Easy. Your Engine and Warranty Are Protected.

VEHICLE APPLICATION:

YEAR: 2014 - 2018

MAKE: Ram

MODEL: 2500/3500

ENGINE: 6.4L Hemi

APPROX. INSTALL TIME: 1HRS | 30MIN

TOOLS REQUIRED:

- 8mm, 10mm, 11mm, 13mm Wrench/Socket
- T20 Torx
- Phillips Screwdriver
- Crescent Wrench
- Panel Popper
- Silicone Spray (Optional)

NOTES:

Kit may not fit with the following Aftermarket Parts installed:

- Body Lift or Lowering Kit
- Custom Hood
- Throttle Body Spacer/ Upgrade

CARB STATUS - PENDING

Product will be submitted to Air Resources Board for approval shortly.

*Not Legal for use in CA or other states adopting CA emissions standards"
See Page 2 for more info.*

S&B FILTER MAINTENANCE:

- Cleanable (KF-1056). If the enclosed filter is Red, it came preoiled from the factory. Please visit www.sbfilters.com for exact oil amount required after cleaning.
- Disposable (KF-1056D). If the enclosed filter is White, it is a disposable filter and should be discarded once it reaches capacity. This filter **does not require oil**. For more info on S&B's disposable filter, visit www.sbfilters.com.

BEFORE YOU START

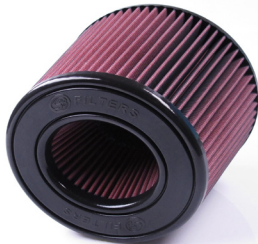
- Please read the entire product guide before proceeding.
- Ensure all components listed on pages 3 & 4 are present.
- If you are missing any of the components, call our customer support at (909) 947-0015.
- Do not work on your vehicle while engine is hot.
- Make sure the engine is turned off and the vehicle is in Park or the Parking Brake is set.

RELATED ITEMS FOR YOUR PURCHASE

Order Online today at www.sbfilters.com or through your local S&B distributor.



Filter Wrap
SKU# WF-1034



Replacement Cotton Filter
SKU# KF-1056



Replacement Dry Filter
SKU# KF-1056D



**Precision II:
Cleaning & Oil Kit**
SKU# 88-0008

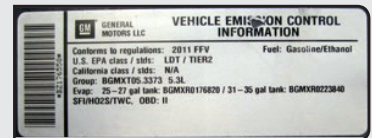
Intake Box Plug Testing

Stock air boxes are a significant contributor to poor air flow which is why S&B designs custom air boxes with secondary and/or enlarged openings. With that said, S&B recognizes the benefits of cooler air, so we have included a plug to seal off the opening if so desired. For optimal performance, we recommend that the intake be used without the end cap except in conditions of extreme heatwave

Performance Testing

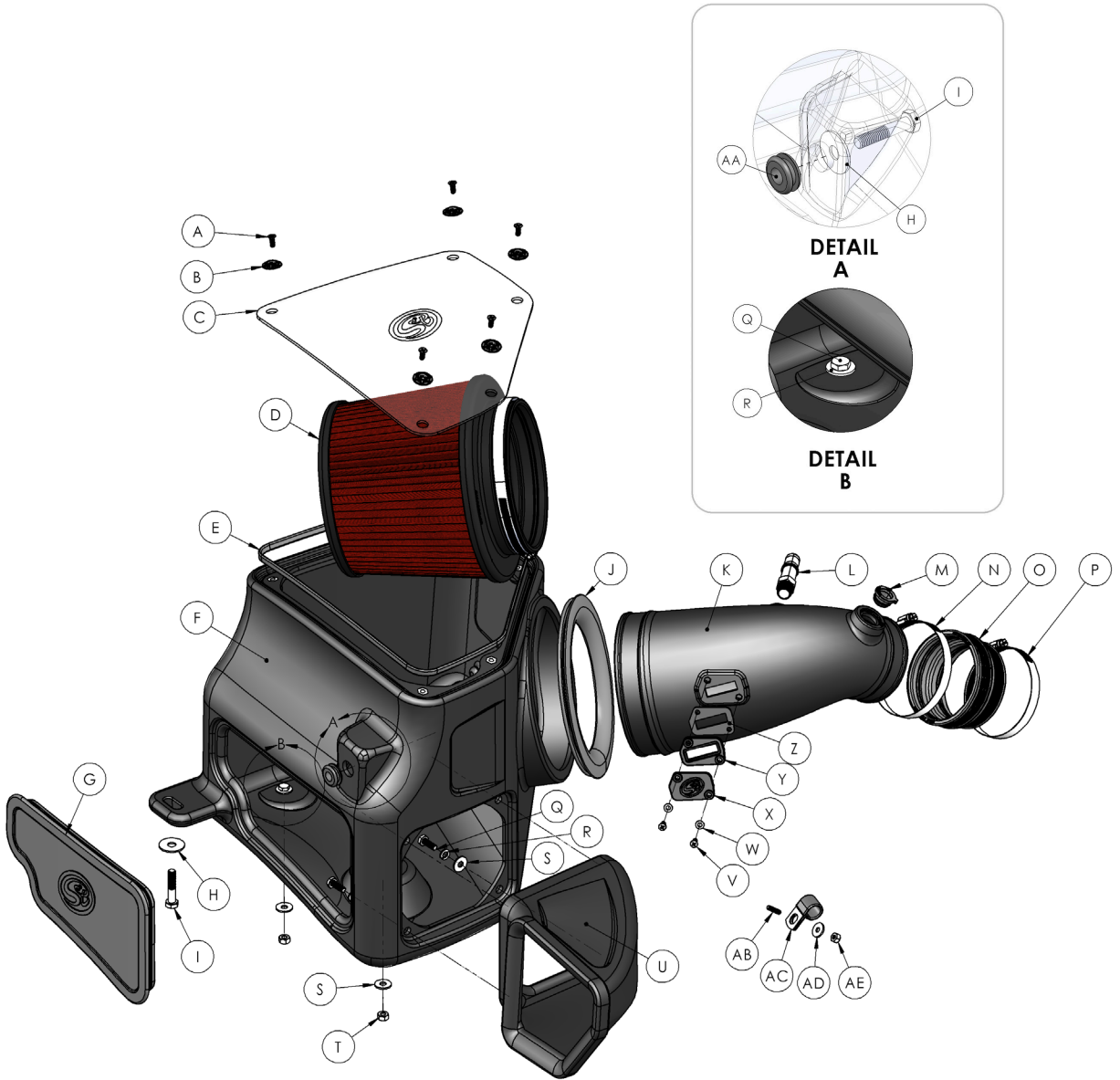
- After your installation is complete engage parking brake and start your engine. Listen for abnormal noises. If an air leak is detected, re-inspect hoses and connections as they may need to be repositioned and tightened.
- S&B FILTERS recommends that you keep your OE intake system in the event it is required in the future.
- In order to maintain your warranty, all connections and components must be checked periodically for alignment and for proper tension on all connections. Failure to do so may void your warranty.
- Use only S&B FILTERS cleaning and oil products to service your filter. Using any other brand oil and/or cleaners on your S&B air filter may void your warranty.

Warning! If your vehicle has a Vehicle Emission Control Information decal affixed to the factory airbox, a new replacement label must be obtained and installed in a readily visible position in the engine compartment in order to remain CARB compliant. Failure to do so will prevent the vehicle from passing a smog check. Replacement labels can be ordered from your local dealership. Regulations state that the VECI label shall not be affixed to any equipment which is easily detached from the vehicle. Label placement, under the hood on a painted surface is recommended.



Emissions Standard The California Air Resource Board (CARB) requires that an E.O. Identification label be applied to the vehicle in order to pass a smog check inspection when a Performance Intake Kit has been installed. You must place the E.O. Label provided on or near the intake kit after installation so that a smog check technician can easily verify the E.O. Number. The exemption process with CARB can take as long as 18 months. Check the status of the exemption process by looking up a specific part number at www.sbfilters.com. The CARB Exemption number and/or status is listed under the Product Details section for each part number. If the status shows as "Pending," CARB has yet to issue an exemption but the product has been submitted. Products that have not been issued an E.O. number are street legal in most states, but may not be used on emission controlled vehicles in the state of California and are for off road use only. If you purchased your kit from S&B Filters directly, we will automatically mail you your Exemption Sticker when it is issued to us. If you purchased your kit from an authorized S&B Filters Dealer, log onto our web site and register to receive your Exemption Sticker.

EXPLODED VIEW:



PARTS LIST: 75-5087/75-5087D

ITEM	QTY	DESCRIPTION	PART NUMBER
A	5	LID SCREW, FLAT, #10-24	AI2005-00
B	5	LID WASHER, COUNTERSUNK, #10	AI2006-00
C	1	CLEAR LID	AI1943-00
D	1	AIR FILTER	KF-1056
E	1	LID SEAL	AI2010-00
F	1	INTAKE BOX	AL1279B-00
G	1	INTAKE BOX PLUG	AI1947C-00
H	2	WASHER, FLAT, 11/32 ID X 1-3/4 OD	AI1080-00
I	2	BOLT, HEX, M8 X 40mm	AI1163-00
J	1	TUBE SEAL	AI1972C-00
K	1	AIR TUBE	AL1297-00
L	1	CCV FITTING, QUICK CONNECT TO 3/8 NPT	AI1701-00
M	1	IAT SENSOR ADAPTER	AI1948C-00
N	1	HOSE CLAMP, #60	AG1008-00
O	1	COUPLER	AI1581C-00
P	1	HOSE CLAMP, #56	AG1019-00
Q	6	BOLT, HEX, 1/4"-20 X 3/4	AI1068-00
R	4	WASHER, SPLIT LOCK, 5/16"	AI1309-00
S	8	WASHER, FLAT, 1/4"	AI1073-00
T	2	LOCKNUT, NYLON, 1/4"-20	AI1074-00
U	1	SNORKEL	AL1279S-00
V	2	SCREW, PAN, #8-32 X 3/4	AI1252-00
W	2	WASHER, FLAT, #8	AI1698-00
X	1	MAF BLOCK OFF PLATE	AI2020-00
Y	1	MAF PAD	AI1822-00
Z	1	MAF GASKET	AI1823-00
AA	1	GROMMET	AI1563C-00
AB	3	THREADED STUD, #10-24, 1.00"	AI2069-00
AC	1	LOOP CLAMP	AI1511-00
AD	3	WASHER, OVERSIZED, #10	AI2070-00
AE	3	LOCKNUT, NYLON, #10-24	AI1047-00
AF	3	PANEL RETAINER PINS	AI1567-00
AG	1	HOSE CLAMP, #104	AG1012-00

HARDWARE PACKS
HP1520-00
AG1008-00
AG1019-00
HP1522-00
AI1068-00
AI1074-00
AI1073-00
AI1163-00
AI1080-00
AI1563-00
AI1567-00
HP1523-00
AI1068-00
AI1309-00
AI1073-00
AI1701-00
AI1948C-00
AI1511-00
AI2069-00
AI2070-00
AI1047-00
HP1524-00
AI1252-00
AI1698-00
AI1822-00
AI1823-00
AI2020-00
LHP0006-00
AI2005-00
AI2006-00
HP1521-00
AI1943-00
AI1766-02

AM0358-00 REV-B 03/26/2018

INSTALLATION STEPS:

- 1** With the ignition switched off and the parking brake set, disconnect the negative battery cable on the driver side. **Note: Failure to disconnect the battery may cause the CEL to illuminate upon completion of the installation and subsequent operation. Do not skip this step!**
Tool Required: 10mm Socket/Wrench



- 2** Lift up and pull out to remove the engine cover from the vehicle.



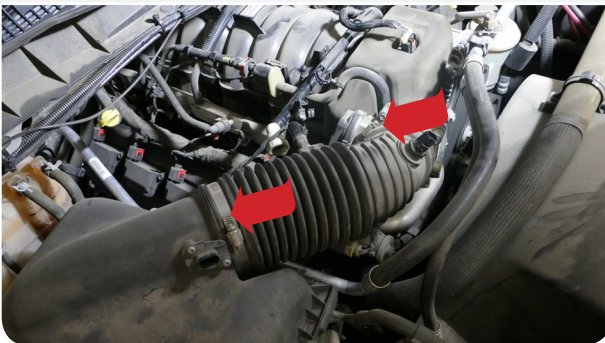
- 3** For **2014 - 2015 models** disconnect the electrical harness for both the MAP and IAT sensor on the intake tube and lid. For **2016 and newer models** you only need to disconnect the IAT sensor on the intake tube. On the newer models the MAP sensor was deleted by the factory.



- 4** Open the two plastic clips and disconnect the CCV line from the intake tube. Push the connector towards the intake tube then press the plastic tab to unlock the connector and pull out away from the tube to disconnect the CCV line.



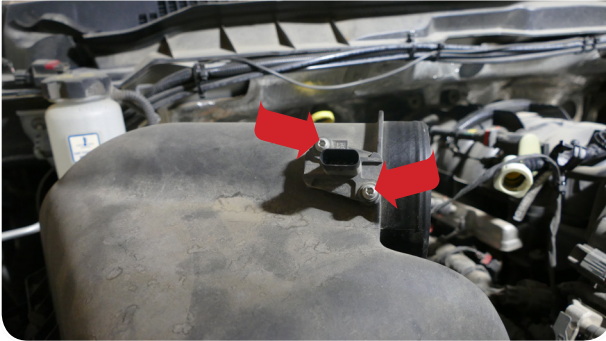
- 5** Loosen the clamp at the throttle body and intake box lid.
Tool Required: 8mm Socket/Wrench



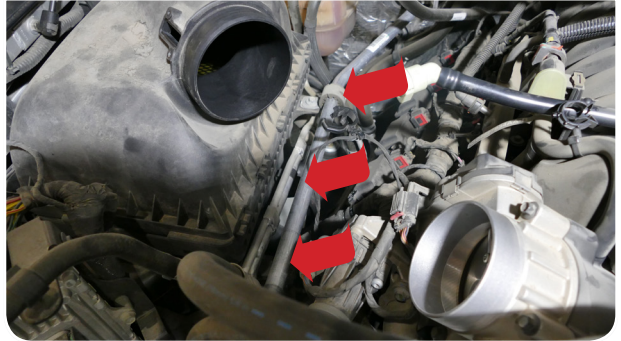
- 6** Remove the IAT sensor from the intake tube by pushing the sensor in to break the seal then rotating the sensor counter clockwise to unlock the sensor and pull the sensor out completely. Set the sensor aside it will be reused in **Step 24**.



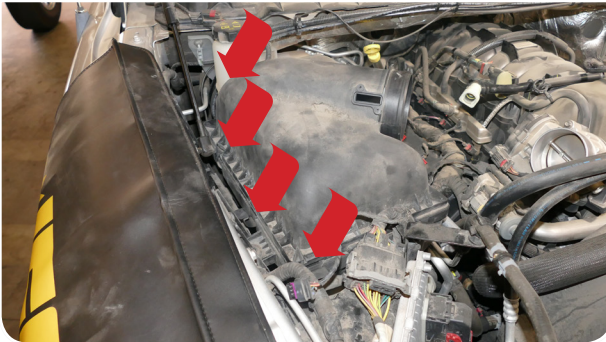
7 If your vehicle is equipped with a MAP sensor. Carefully remove the MAP sensor from the intake box lid. It will be reinstalled in **Step 26**.
Tool Required: T20 Torx



8 Disconnect the A/C line bracket and tabs securing the A/C lines to the side of the intake box. For **2014 - 2015 models** there is one bracket and two plastic tabs. For **2016 and newer** there is two brackets and two plastic tabs.
Tool Required: 10mm Socket/Wrench, Panel Popper



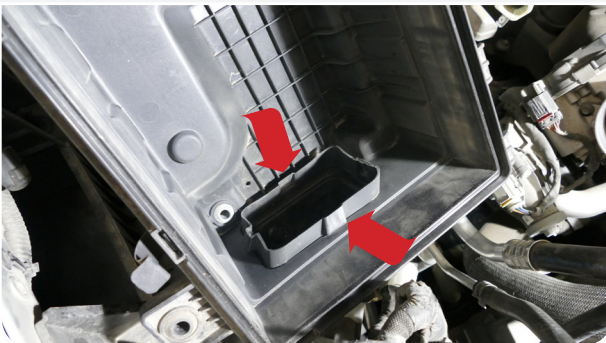
9 Unfasten the four clips to remove the intake box lid from the vehicle.



10a Lift the bottom half of the intake box up to get the intake box out of the grommets and rotate the intake box so the snorkel can clear the ECU and other brackets that are in the way. If you are still have issues getting the snorkel out, remove the filter and snorkel by pushing in the tabs, go to **Step 10b** for more details.



10b (Optional) To remove the snorkel attached to the intake box. Push in tabs inward and push out.

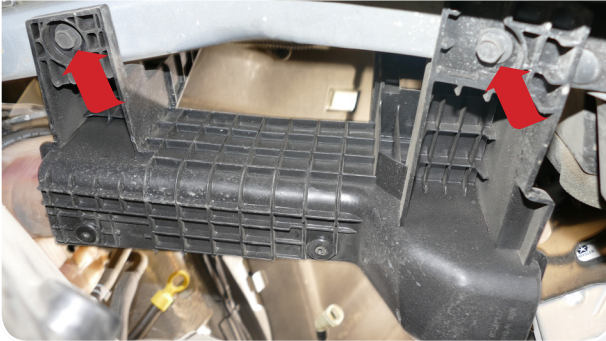


11 Remove the wheel liner. There are a combination of bolts and panel retainer pins that may need to be removed to lower the wheel liner. Do not forget to remove the two bolts that are mounted vertically that is attached to the intake box tray.
Tool Required: 8mm Socket/Wrench, Panel Popper

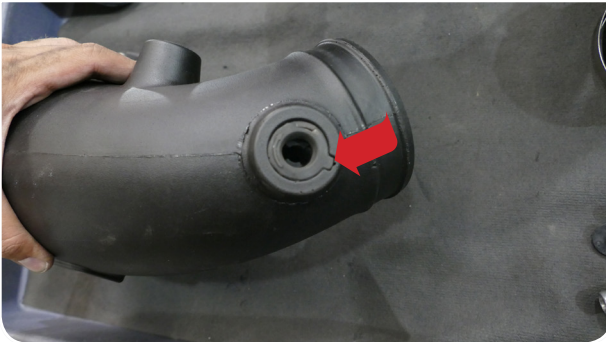


INSTALLATION STEPS:

- 12** Remove the four bolts securing the intake box tray from the vehicle. **Note:** For 2018 vehicles, disconnect the harness clip from the intake box tray.
Tool Required: 13mm Socket/Wrench, Panel Popper



- 13** Install the IAT Sensor Adapter (M) by pressing it into the raised pad on the Intake tube (K). Align the tab on the adapter with the notch on the intake tube.



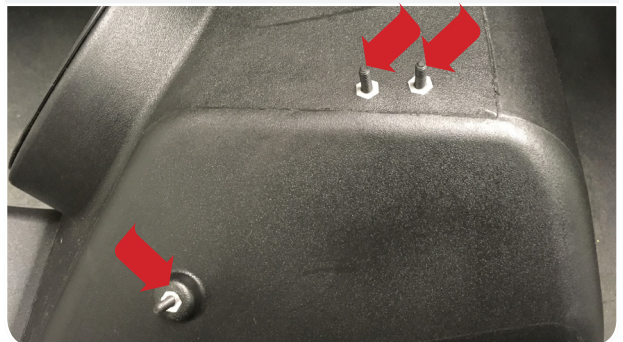
- 14** Install the Grommet (AA) into the Intake Box (F).



- 15** Install the Tube Seal (J) into the Intake Box (F).



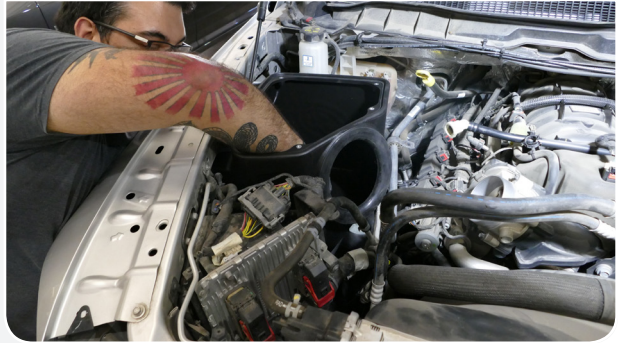
- 16** Install the Threaded Studs (AB) into the inserts on the side of the Intake Box (F) until finger tight. Depending on your model's year you may require to install two or three studs. See **Step 21** for A/C line configurations.



17 Determine if you want to install the Intake Box Plug (G) onto the Intake Box (F). See the "Intake Box Plug" note on Page 2 to decide the desired setup.



18 For ease of installation it is suggested to assemble the intake inside the vehicle. First place Snorkel (U) in position close to the fender inlet then place the Intake Box (F) into the vehicle.



19 Align the Snorkel (U) with the Intake Box (F) and secure them together with 1/4"-20 Bolts (Q), 5/16" Split Lock Washers (R), 1/4" Flat Washers (S). Tighten all four 1/4"-20 Bolts.
Tool Required: 11mm Socket/Wrench



20a Secure the Intake Box (F) to the fender with the M8 Bolt (I) and Flat Washer (H). Leave the bolts loose.
Tool Required: 13mm Socket/Wrench

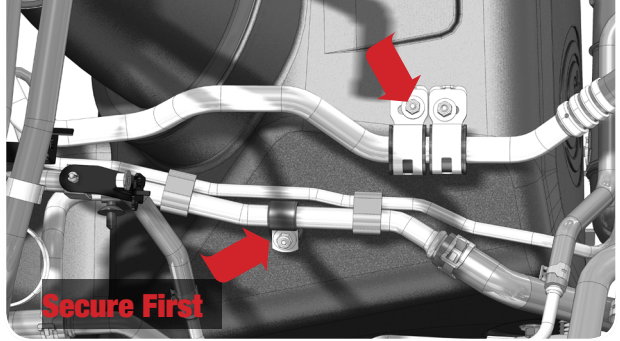


INSTALLATION STEPS:

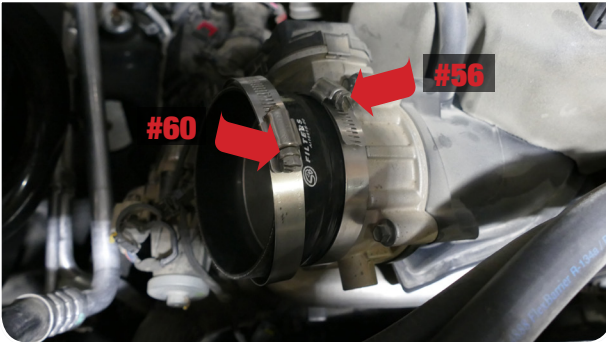
- 20b** From inside the wheel well, secure the Intake Box (F) to the frame with the M8 Bolt (I) and Flat Washer (H). Make any final adjustments if needed then tighten both bolts.
Tool Required: 13mm Socket/Wrench



- 21** Secure the two A/C lines disconnected in Step 8. The lower A/C line with the Loop Clamp (AC), Washer (AD), and Locknut (AE). Align the stock A/C brackets on the higher A/C line and secure with the Washer (AD), and Locknut (AE).
Tool Required: 10mm Socket/Wrench



- 22** Slide the Coupler (O) onto the throttle body with the Hose Clamps #56 and #60 (P & N). Only tighten the #56 Hose Clamp, leave the other one loose.
Tool Required: 8mm Socket/Wrench



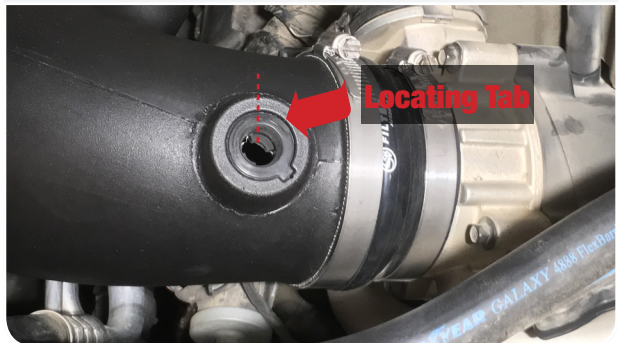
- 23** If necessary, spray some silicone lubricant around the Tube Seal (J) so the Intake Tube (K) can go through the tube seal easier. Feed the air tube through the tube seal from inside the Intake Box (F) then connect the other end of the intake tube into the Coupler (O). Tighten the #60 Hose Clamp (N).
Tool Required: 8mm Socket/Wrench



- 24** Install the CCV Fitting (L) onto the Intake Tube (K) until finger tight then use a crescent wrench and give it a one to two complete turns. Connect the CCV line to the CCV fitting and secure the plastic clips to the hoses.
Tool Required: Crescent Wrench



- 25a** Install the IAT sensor removed in Step 6. Line up the tab on the sensor in between the arrow and left of the locating tab then rotate the sensor clockwise until it gets to the right side of the locating tab.



25b Reconnect the electrical harness into the IAT sensor.



26a For **2014 - 2015 models** carefully install the MAP sensor removed in Step 7 with the MAP Gasket (Z) and MAP Pad (Y) and #8-32 Screws (V). For **2016 and newer models** go to **Step 27**.
Tool Required: Phillips Screwdriver



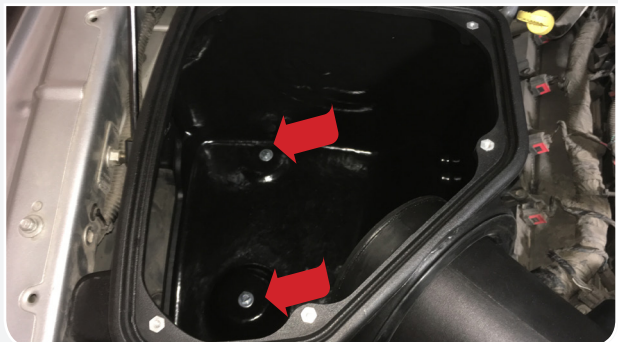
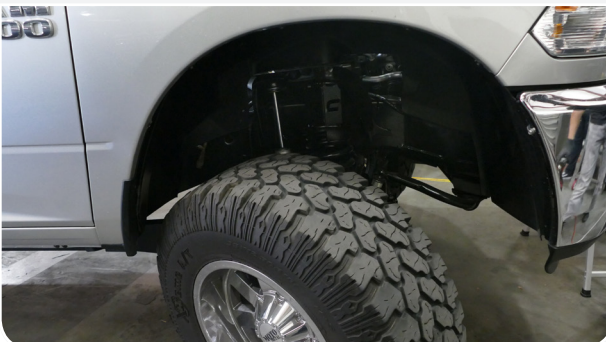
26b Reconnect the electrical harness into the MAP sensor.



27 **2016 and newer models** do not have a MAP sensor. Install the MAP Gasket (Z), MAP Block Off Plate (X) and #8-32 Screws (V) to block the opening.
Tool Required: Phillips Screwdriver



28 Reinstall the wheel liner and the bolts. Use the Panel Retainer Pins (AF) to replace any pins broken during the removal process. Secure the wheel liner to the Air Box (F) with the 1/4"-20 Bolts (Q), Flat Washers (S), and Locknuts (T). You will need two 11mm sockets, wrenches or a combination of the two to tighten both the bolt and locknut.
Tool Required: (2) 11mm Socket/Wrench



INSTALLATION STEPS:

- 29** Install the Lid Seal (E) into the grooves on top of the Intake Box (F).



- 30** Place the Air Filter (C) into the Intake Box (A). Slide the Air Filter (D) onto the Intake Tube (K) and tighten the #104 Hose Clamp (AG) on the filter.

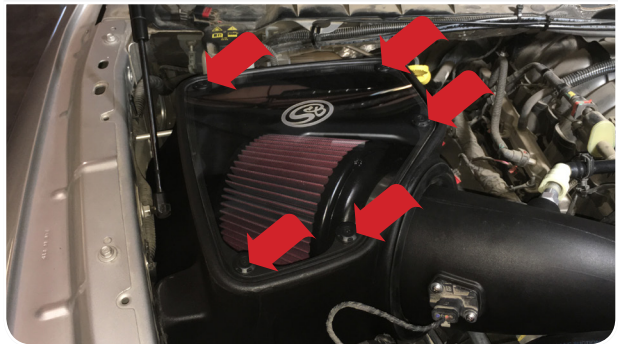


- 31** Peel off the protective covering on the Clear Lid (C).



- 32** Place the Clear Lid (C) on top of the Intake Box (F) and secure with the five #10-24 Lid Screws (A) and Lid Washers (B).

Tool Required: Phillips Screwdriver



- 33** Reinstall the engine cover.



- 34** Reconnect the negative battery cable. Inspect your installation, make sure the kit is properly positioned and all fasteners are secured. Keep all stock parts in case you would ever need to reinstall the stock intake assembly. Affix the ID label near the intake kit. The installation is now complete.

Tool Required: 10mm Socket/Wrench

