



FILTERS

COLD AIR INTAKE

INSTALLATION INSTRUCTIONS:

P/N: 75-5086 / 75-5086D





FILTERS

BREATHE EASY. YOUR ENGINE & WARRANTY ARE PROTECTED.™

Thank You! for purchasing your new S&B Filters intake kit. If at any time you need additional assistance with installation or have any other questions or comments, feel free to call our customer service department at 909-947-0015. You can also take advantage of our live chat at www.sbfilters.com and connect with an S&B representative immediately. We hope you enjoy your new S&B Filters product and thank you for your continued support. Breathe Easy. Your Engine and Warranty Are Protected.

VEHICLE APPLICATION:

YEAR: 2016 - 2018

MAKE: Chevrolet/GMC

MODEL: Colorado/Canyon

ENGINE: 2.8L Duramax

APPROX. INSTALL TIME: 1HRS | 00MIN

TOOLS REQUIRED:

- 10mm and 11mm Wrench/Socket
- 5/16" Nut Driver or Flat Blade Screwdriver
- T20 Torx Key (Supplied)
- Phillips Screwdriver

NOTES:

Kit may not fit with the following Aftermarket Parts installed:

- Body Lift or Lowering Kit
- Custom Hood
- Throttle Body Spacer/ Upgrade

CARB STATUS - EXEMPT

Product will be submitted to Air Resources Board for approval shortly.

Not Legal for use in CA or other states adopting CA emissions standards"
See Page 2 for more info.

S&B FILTER MAINTENANCE:

- Cleanable (KF-1064). If the enclosed filter is Red, it came preoiled from the factory. Please visit www.sbfilters.com for exact oil amount required after cleaning.
- Disposable (KF-1064D). If the enclosed filter is White, it is a disposable filter and should be discarded once it reaches capacity. This filter **does not require oil**. For more info on S&B's disposable filter, visit www.sbfilters.com.

BEFORE YOU START

- Please read the entire product guide before proceeding.
- Ensure all components listed on pages 1 & 2 are present.
- If you are missing any of the components, call our customer support at (909) 947-0015.
- Do not work on your vehicle while engine is hot.
- Make sure the engine is turned off and the vehicle is in Park or the Parking Brake is set.

RELATED ITEMS FOR YOUR PURCHASE

Order Online today at www.sbfilters.com or through your local S&B distributor.



Replacement
Cotton Filter
SKU# KF-1064



Replacement
Dry Filter
SKU# KF-1064D



Precision II:
Cleaning & Oil Kit
SKU# 88-0008

Air Box Plug Testing

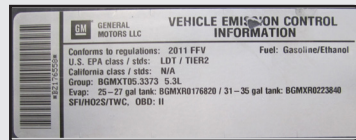
Stock air boxes are a significant contributor to poor air flow which is why S&B designs custom air boxes with secondary and/or enlarged openings. With that said, S&B recognizes the benefits of cooler air, so we have included a plug to seal off the opening or a scoop for additional air flow. For optimal performance, we recommend that the intake be used with the scoop installed except in conditions of extreme heat.

Note: This intake kit deletes the stock resonating chamber, so there will be an increase in turbo whistle/engine noise coming from the engine bay. If you prefer a quieter riding experience, installing the box plug in lieu of the auxiliary scoop is recommended.

Performance Testing

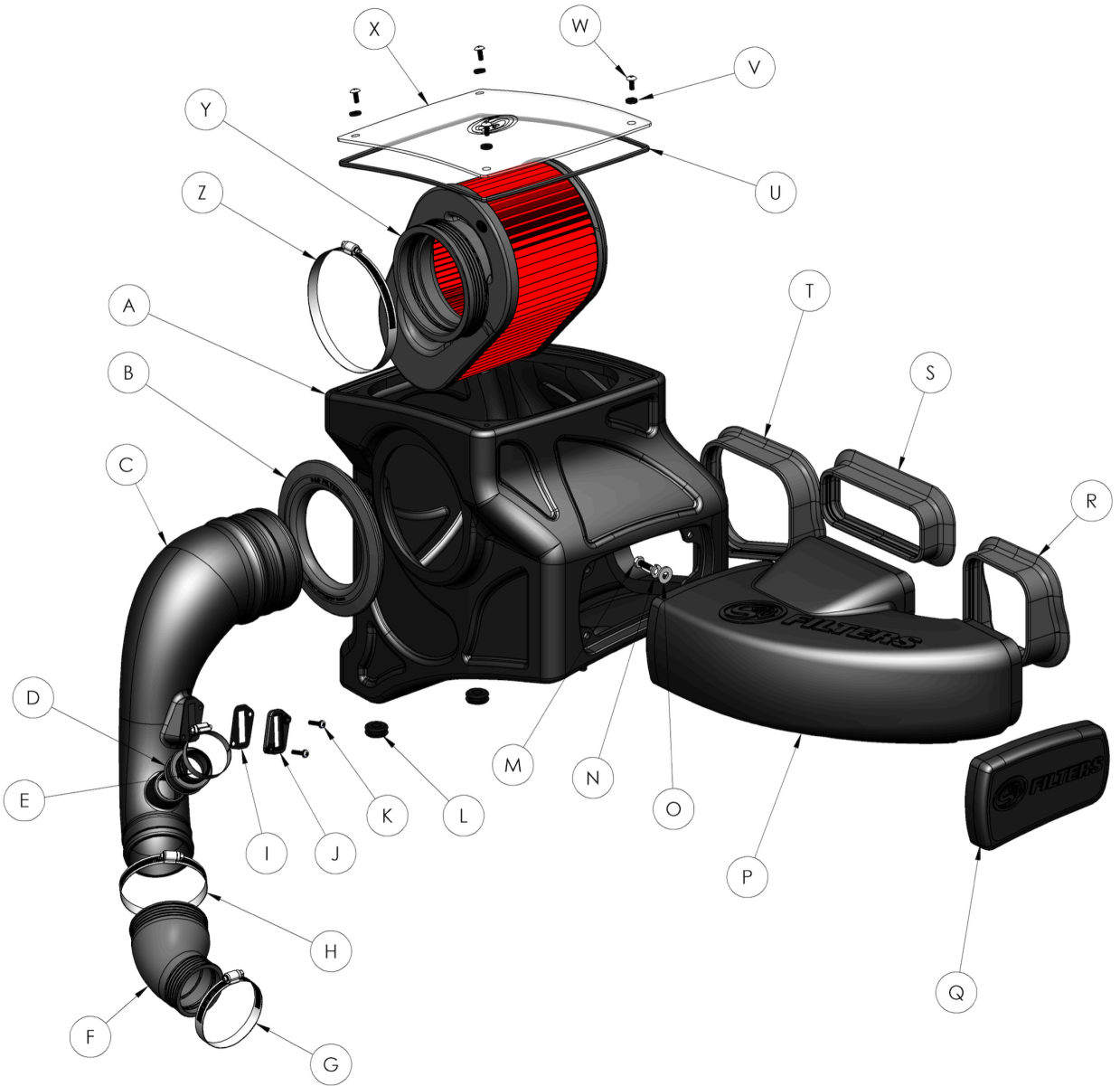
- After your installation is complete engage parking brake and start your engine. Listen for abnormal noises. If an air leak is detected, re-inspect hoses and connections as they may need to be repositioned and tightened.
- S&B FILTERS recommends that you keep your OE intake system in the event it is required in the future.
- In order to maintain your warranty, all connections and components must be checked periodically for alignment and for proper tension on all connections. Failure to do so may void your warranty.
- Use only S&B FILTERS cleaning and oil products to service your filter. Using any other brand oil and/or cleaners on your S&B air filter may void your warranty.

Warning! If your vehicle has a Vehicle Emission Control Information decal affixed to the factory airbox, a new replacement label must be obtained and installed in a readily visible position in the engine compartment in order to remain CARB compliant. Failure to do so will prevent the vehicle from passing a smog check. Replacement labels can be ordered from your local dealership. Regulations state that the VECL label shall not be affixed to any equipment which is easily detached from the vehicle. Label placement, under the hood on a painted surface is recommended.



Emissions Standard The California Air Resource Board (CARB) requires that an E.O. Identification label be applied to the vehicle in order to pass a smog check inspection when a Performance Intake Kit has been installed. You must place the E.O. Label provided on or near the intake kit after installation so that a smog check technician can easily verify the E.O. Number. Check the status of the exemption process by looking up a specific part number at www.sbfilters.com. The CARB Exemption number and/or status is listed under the Product Details section for each part number. If the status shows as "Pending," CARB has yet to issue an exemption but the product has been submitted. Products that have not been issued an EO number are street legal in most states, but may not be used on emission controlled vehicles in the state of California and are for off road use only. If you purchased your kit from S&B Filters directly, we will automatically mail you your Exemption Sticker when it is issued to us. If you purchased your kit from an authorized S&B Filters Dealer, log onto our web site and register to receive your Exemption Sticker.

EXPLODED VIEW:



PARTS LIST: 75-5086/75-5086D

ITEM	QTY	DESCRIPTION	PART NUMBER
A	1	AIR BOX	AL1260-00
B	1	TUBE SEAL	AI1650C-00
C	1	INTAKE TUBE	AL1261-00
D	1	BREATHER HOSE ADAPTER	AI1828C-00
E	1	HOSE CLAMP, #24	AG1017-00
F	1	COUPLER	AI1856C-00
G	1	HOSE CLAMP, #44	AG1006-00
H	1	HOSE CLAMP, #52	AG1007-00
I	1	MAF GASKET	AI1823-00
J	1	MAF PAD	AI1822-00
K	2	SCREW, SEMS, 8/32" x 3/4"	AI1837-00
L	2	AIR BOX GROMMET	AI1563-00
M	4	SCREW, HEX, 1/4-20 x 3/4"	AI1068-00
N	4	LOCK WASHER, 5/16"	AI1309-00
O	4	FLAT WASHER, 5/16"	AI1073-00
P	1	AUXILIARY SCOOP	AL1262-00
Q	1	BOX PLUG	AL1263-00
R	1	SCOOP FENDER SEAL #2	AI1827C-00
S	1	SCOOP FENDER SEAL #1	AI1826C-00
T	1	AIR BOX FENDER SEAL	AI1825C-00
U	1	LID SEAL	AI1766-04
V	4	LID WASHER	AI2006-00
W	4	SCREW, FLAT, #10-24 X 1/2"	AI2005-00
X	1	CLEAR LID	AI1893-00
Y	1	AIR FILTER	KF-1064
Z	1	HOSE CLAMP, #80	AG1010-00
ITEMS BELOW ARE NOT SHOWN IN THE EXPLODED VIEW			
AA	1	T20 TORX KEY	AI1327-00

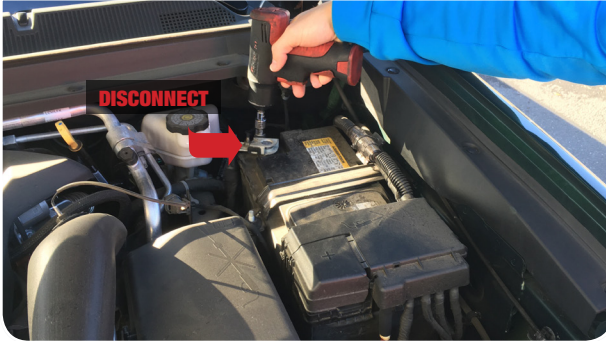
HARDWARE PACKS

HP1442-00
 AG1017-00
 AG1006-00
 AG1007-00
 HP1295-00
 AI2005-00
 AI2006-00
 HP1188-00
 AI1068-00
 AI1309-00
 AI1073-00
 HP1444-00
 AI1563-00
 AI1327-00
 HP1407-00
 AI1837-00
 AI1822-00
 AI1823-00
 HP1443-00
 AI1893-00
 AI1766-04

AM0321-00 REV-G 07/25/2018

INSTALLATION STEPS:

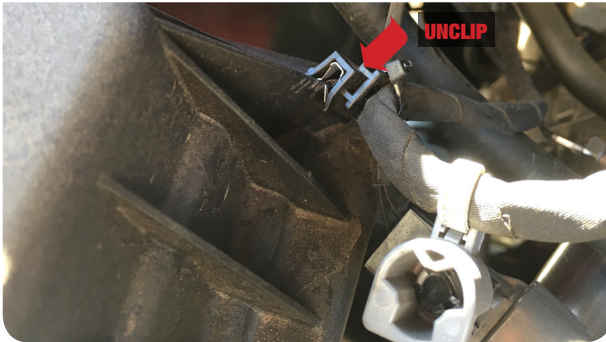
- 1** With the ignition switched off and the parking brake set, disconnect the negative battery cable on the passenger's side with a 10mm Socket/Wrench. **Note: Failure to disconnect the battery may cause the CEL to illuminate upon completion of the installation and subsequent operation. Do not skip this step!**



- 2** Disconnect the MAF sensor harness from the sensor. Disengage the red locking clip and press down the tab to remove.



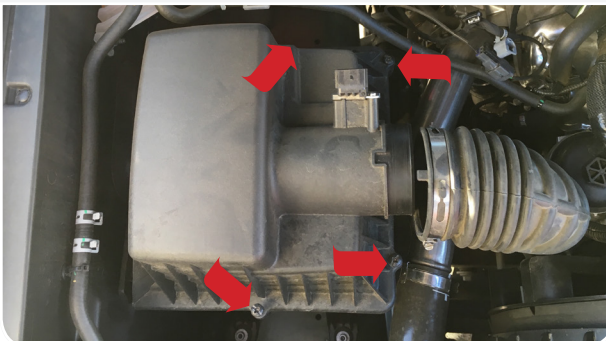
- 3** Remove the wire loom clip from the stock intake box lid.



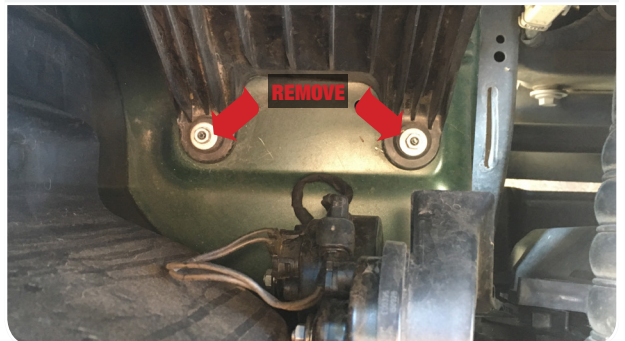
- 4** Use a 5/16" Nut Driver to loosen the stock hose clamp and pull the stock intake tube away from the stock intake box lid.



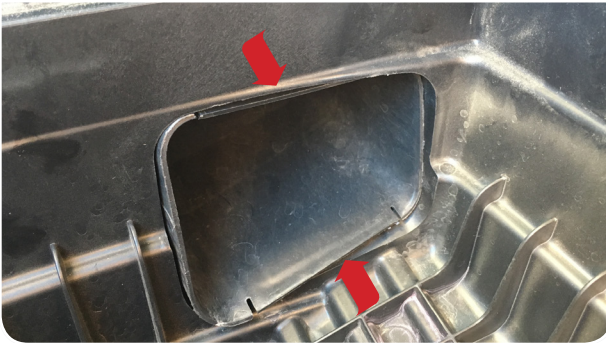
- 5** Loosen the four screws securing the stock intake box lid with a Phillips Screwdriver, then remove both the stock intake box lid and stock air filter.



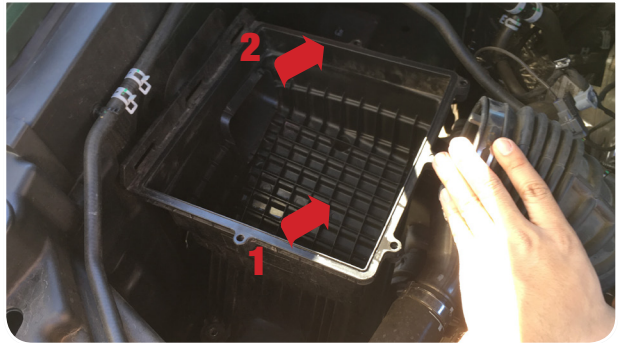
- 6** Use a 10mm Socket/Wrench to remove the two mounting nuts securing the stock intake box. Set the mounting nuts aside, they will be reused in Step 25.



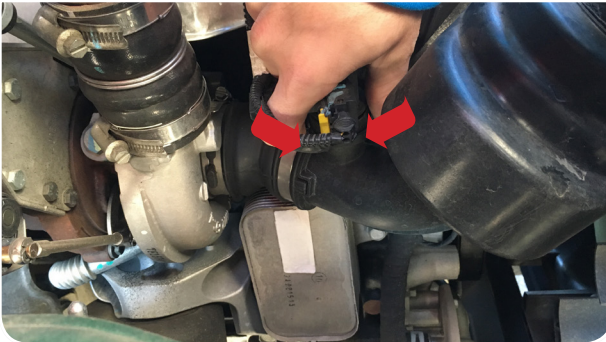
7 Disconnect the stock air inlet from the stock intake box by squeezing in the tabs.



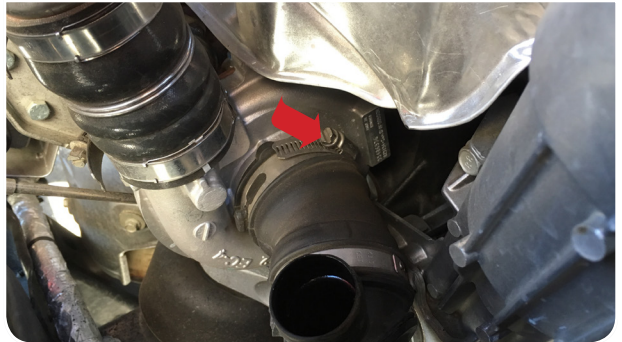
8 Remove the stock intake box from the vehicle, then remove the stock air inlet from the fender wall. Be careful not to pull too hard when removing the stock intake box. Remove a section of the intercooler piping for more clearance if necessary.



9 Remove the intercooler pipe if needed. Disconnect the breather hose connection from the stock intake tube. Squeeze the tabs to remove.



10 Loosen the hose clamp at the turbo inlet, then remove the stock intake tube from the vehicle.



11a (Optional) If you would like to remove the stock air duct from inside the fender, follow steps 11b and 11c, otherwise skip to Step 12.



11b (Optional) Using the supplied T20 Torx key, remove the three screws securing the front passenger fender liner and carefully pull it down from the fender. This will give access to the stock air duct.



INSTALLATION STEPS:

- 11c** (Optional) Using a panel popper or flat head screwdriver, remove the two clips securing the stock air duct to the fender wall, then remove the stock air duct from the vehicle. Once the stock air duct is removed, return the fender liner to its original position and secure using the three screws removed in Step 11b.



- 12** Remove the metal bushings from the stock intake box.



- 13** Install the Air Box Grommets (L) into the Air Box (A).



- 14** Install the metal bushings removed in Step 12 into the Air Box Grommets (L).



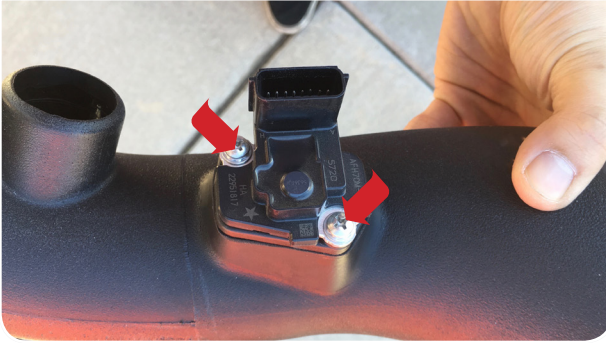
- 15** Insert the Air Box Fender Seal (T) into the Air Box (A).



- 16** Install the Tube Seal (B) onto the Air Box (A).



17 Carefully remove the MAF sensor from the stock intake box lid with a T20 Torx. Use the supplied 8-32 Screws (K), MAF Pad (J), Gasket (I) to install the sensors onto the Intake Tube (C) with a Phillips Screwdriver. Do not over tighten.



18 Install the Breather Hose Adapter (D) and Hose Clamp #24 (E) onto the Intake Tube (C). Tighten the hose clamp with a 5/16" Nut Driver or Flat Blade Screwdriver.



19 Insert the Intake Tube (C) into the Air Box (A). The intake tube stop bead should meet up to the Tube Seal (B).



20 Determine if you want to install the Box Plug (Q) "Step 20" or Auxiliary Scoop (P) "Step 21" onto the Air Box (A). See the "Air Box Plug" note on Page 2 to decide the desired setup. To install the box plug, install the 1/4-20 Screws (M), Lock Washers (N), and Washers (O) with a 10mm Socket/Wrench from inside the air box then proceed to Step 22.

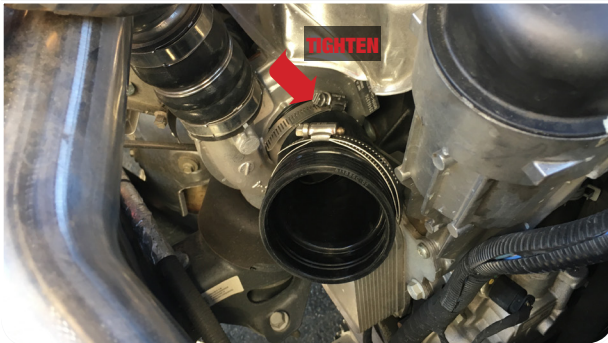


21 To install the Auxiliary Scoop (P), first install the Scoop Fender Seal #1 and #2 (S & R) onto the auxiliary scoop. Place the Auxiliary Scoop (P) into the truck underneath the coolant tank. The Auxiliary Scoop (P) will be secured to the Air Box (A) later, in Step 24.



INSTALLATION STEPS:

- 22** Install the Coupler (F) onto the turbo with the #44 and #52 Hose Clamps (G & H). Try to get the angle of the coupler as shown below. Tighten the hose clamp at the turbo, leave the other one loose.



- 23b** Make sure the Air Box Fender Seal (T) is sitting flat against the fender wall and not being pushed upward.



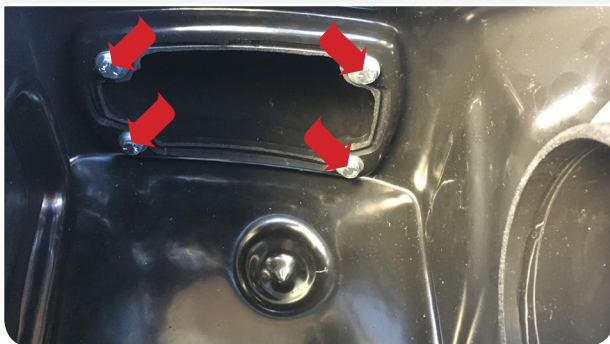
- 25** Use a 10mm Socket/Wrench to reinstall the two mounting nuts removed in Step 6.



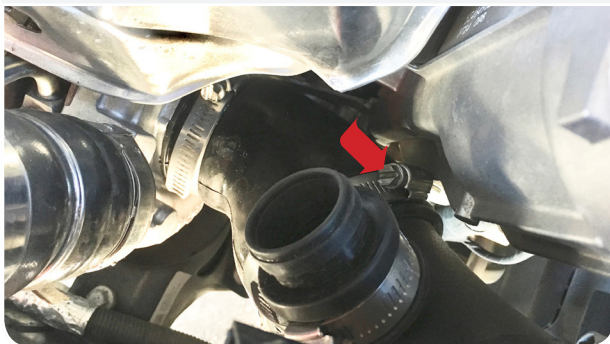
- 23a** Place the Air Box (A) assembly into the truck and connect the Air Tube (C) into the Coupler (F). Ensure that the threaded studs go through the Grommets (L) and Metal Bushings installed in Steps 13 and 14.



- 24** Skip to Step 25 if you installed the Box Plug (Q) in Step 20. If you installed the Auxiliary Scoop (P) use install the 1/4-20 Screws (M), Lock Washers (N), and Washers (O) with a 11mm Socket/Wrench from inside the Air Box (A).



- 26** Make sure that the Air Tube (C) is in the Coupler (F) and tighten the #52 Hose Clamp (H).



27 Connect the breather hose into the Breather Hose Adapter (D) and MAF sensor harness back into the sensor. Engage the red locking clip. Give the breather hose a little tug to make sure that it is secure.



28 Place the Air Filter (Y) into the Air Box (A). Rotate the air filter into position as shown below and tighten the #80 Hose Clamp (Z).



29 Press the Lid Seal (U) into the groove on top of the Air Box (A).



30 Remove the protective covering on the Clear Lid (X).



31 Install the Clear Lid (X) onto the Air Box (A) with the 10-24 Screws (W) and Lid Washers (V) using a Screwdriver.



32 Reconnect the negative terminal on the battery. Inspect your installation, make sure the kit is properly positioned and all fasteners are secure. Keep all stock parts in case you ever need to reinstall the stock intake assembly. Affix the ID label near the intake kit. The installation is now complete.

