



# FILTERS

## COLD AIR INTAKE

### INSTALLATION INSTRUCTIONS:

P/N: 75-5039/75-5039D





# FILTERS

**BREATHE EASY. YOUR ENGINE & WARRANTY ARE PROTECTED.™**

**Thank You!** for purchasing your new S&B Filters intake kit. If at any time you need additional assistance with installation or have any other questions or comments, feel free to call our customer service department at 909-947-0015. You can also take advantage of our live chat at [www.sbfilters.com](http://www.sbfilters.com) and connect with an S&B representative immediately. We hope you enjoy your new S&B Filters product and thank you for your continued support. Breathe Easy. Your Engine and Warranty Are Protected.

## VEHICLE APPLICATION:

**YEAR:** 2010 - 2017 (4.6L), 2007-2018 (5.7L)

**MAKE:** Toyota

**MODEL:** Tundra

**ENGINE:** 4.6L, 5.7L

**APPROX. INSTALL TIME:** 1HRS | 00MIN

## TOOLS REQUIRED:

- 8mm, 10 mm socket wrench
- Phillips Screwdriver

## NOTES:

Kit may not fit with the following Aftermarket Parts installed:

- Body Lift or Lowering Kit
- Custom Hood
- Throttle Body Spacer/ Upgrade

## CARB STATUS - PENDING

Product will be submitted to Air Resources Board for approval shortly.

**Not Legal for use in CA or other states adopting CA emissions standards"**  
**See Page 2 for more info.**

## THREAD LOCKER USE

We have provided a small tube of thread locker in your kit. Whenever you see the symbol above on a step of the instructions apply 1 small drop of the thread locker to the threads of the screws or bolts. This will keep your hardware from vibrating loose during rough driving. If the hardware ever needs to be removed, do so slowly to avoid having the inserts strip out from the plastic.

## S&B FILTER MAINTENANCE:

- Cleanable (KF-1056). If the enclosed filter is Red, it came preoiled from our factory. Please visit [www.sbfilters.com](http://www.sbfilters.com) for exact oil amount required after cleaning.
- Disposable (KF-1056D). If the enclosed filter is White, it is a disposable filter and should be discarded once it reaches capacity. This filter **does not require oil**. For more info on S&B's disposable filter, visit [www.sbfilters.com](http://www.sbfilters.com).

## BEFORE YOU START

- Please read the entire product guide before proceeding.
- Ensure all components listed on pages 3 & 4 are present.
- If you are missing any of the components, call our customer support at (909) 947-0015.
- Do not work on your vehicle while engine is hot.
- Make sure the engine is turned off and the vehicle is in Park or the Parking Brake is set.

## GENERAL INFORMATION AND WARNINGS

### Operation in snow and rain

If you are driving in heavy snowfall or extreme rain conditions, you should always check for accumulated snow and water on the air filter following your OE recommendations for driving in these conditions.

The following is recommended after operating the vehicle up to 100 miles in heavy snowfall or extreme rain: At the earliest opportunity, open the hood and check the air box and filter. If any snow has accumulated, make sure to remove the snow from the filter, box, and inlet. It is okay if the filter is a little wet. Wet filters will normally dry out on their own. If the filter is dripping wet, it should be replaced with another filter that is not wet. Do not reuse the dripping wet filter until it has naturally dried.

### Air Box Plug Testing

Stock intake boxes are a significant contributor to poor air flow which is why S&B designs custom air boxes with secondary and/or enlarged openings. With that said, S&B recognizes the benefits of cooler air, so we have included a plug to seal off the opening if so desired. For optimal performance, we recommend that the intake be used without the end cap except in conditions of extreme heatwave.

### Performance Testing

- After your installation is complete engage parking brake and start your engine. Listen for abnormal noises. If an air leak is detected, re-inspect hoses and connections as they may need to be repositioned and tightened.
- S&B FILTERS recommends that you keep your OE intake system in the event it is required in the future.
- In order to maintain your warranty, all connections and components must be checked periodically for alignment and for proper tension on all connections. Failure to do so may void your warranty.
- Use only S&B FILTERS cleaning and oil products to service your filter. Using any other brand oil and/or cleaners on your S&B air filter may void your warranty.

### Periodically check the following:

- Intake tube and filter connections, and intake box fasteners, making sure they are tight.
- All electrical connections and wire harnesses moved during the installation of the intake and make sure they are secure and away from any hot or moving components
- Check for any signs of abrasion or wear and tear on the intake tube, box, filter, and electrical harnesses moved or near the intake and repair/replace as necessary.

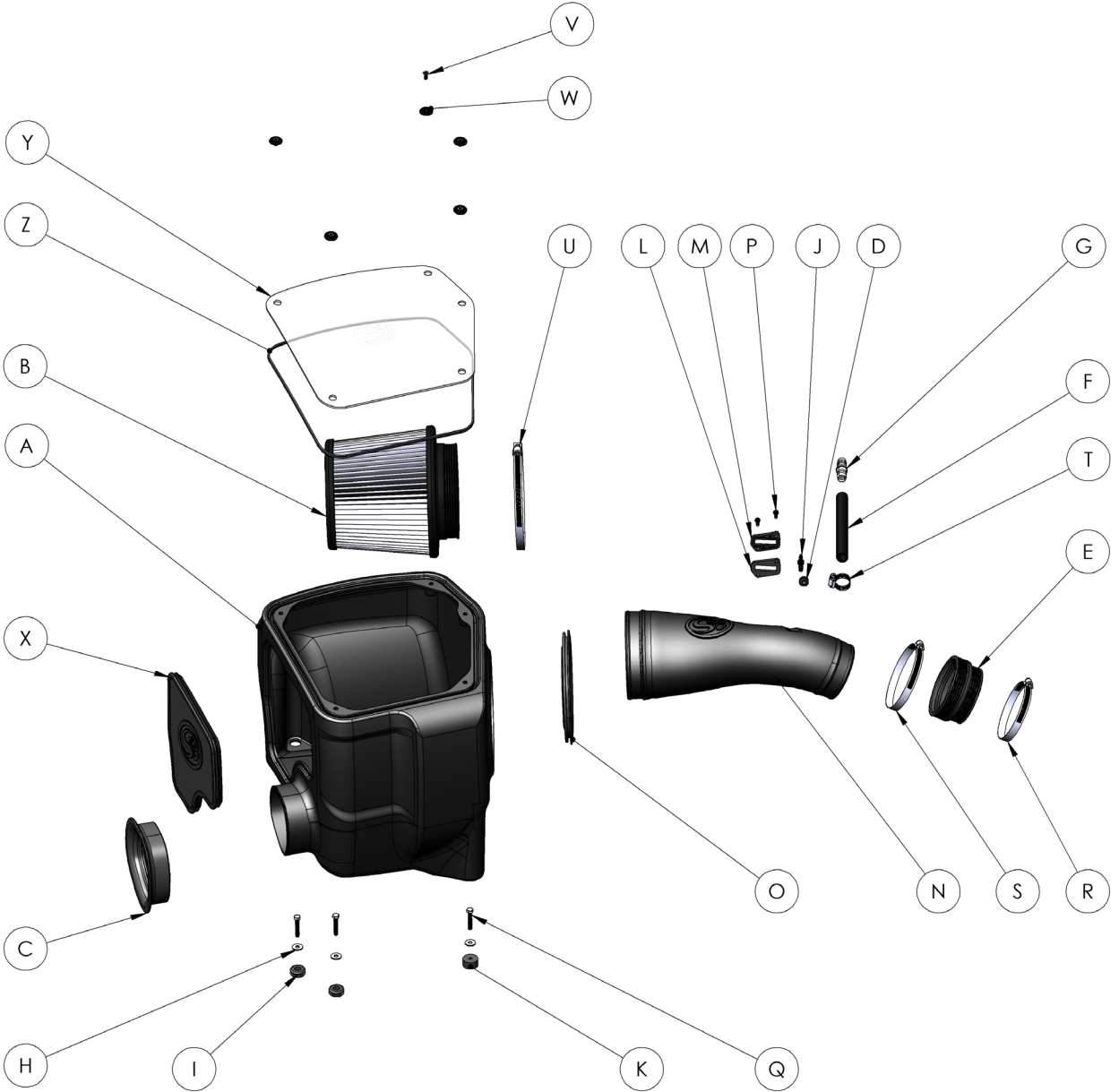
### Emissions Standard

The California Air Resource Board (CARB) requires that an E.O. Identification label be applied to the vehicle in order to pass a smog check inspection when a Performance Intake Kit has been installed. You must place the E.O. Label provided on or near the intake kit after installation so that a smog check technician can easily verify the E.O. Number. Check the status of the exemption process by looking up a specific part number at [www.sbfilters.com](http://www.sbfilters.com). The CARB Exemption number and/or status is listed under the Product Details section for each part number. If the status shows as "Pending," CARB has yet to issue an exemption but the product has been submitted. Products that have not been issued an E.O. number are street legal in most states, but may not be used on emission controlled vehicles in the state of California and are for off road use only. If you purchased your kit from S&B Filters directly, we will automatically mail you your Exemption Sticker when it is issued to us. If you purchased your kit from an authorized S&B Filters Dealer, log onto our web site and register to receive your Exemption Sticker.

If your vehicle has a Vehicle Emission Control Information decal affixed to the factory airbox, a new replacement label must be obtained and installed in a readily visible position in the engine compartment in order to remain CARB compliant. Failure to do so will prevent the vehicle from passing a smog check. Replacement labels can be ordered from your local dealership. Regulations state that the VECI label shall not be affixed to any equipment which is easily detached from the vehicle. Label placement, under the hood on a painted surface is recommended.



**EXPLODED VIEW:**



# PARTS LIST: 75-5039/75-5039D

ITEM	QTY	DESCRIPTION	PART NUMBER
A	1	AIRBOX	AL1326B-00
B	1	SILICONE FILTER	KF-1056
C	1	FENDER SEAL	AI1580C-00
D	1	TUBE GROMMET	AI1593-00
E	1	SILICONE COUPLER	AI1581C-00
F	1	SILICONE HOSE	AI1038-01
G	1	HOSE ADAPTER	AI1110-00
H	3	WASHER, FLAT, M6	AI1535-00
I	2	BOX GROMMET	AI1563-00
J	1	SMALL HOSE ADAPTER	AI1594-00
K	1	BOX MOUNT SPACER	AI2051-00
L	1	MAF GASKET	AI1823-00
M	1	MAF PLATE	AI1822-00
N	1	AIR TUBE	AL1326-00
O	1	TUBE SEAL	AI1972C-00
P	2	MAF PLATE SCREW (8-32 X 3/4")	AI1837-00
Q	3	BOLT, HEX, M6X30	AI1257-00
R	1	#56 HOSECLAMP	AG1019-00
S	1	#64 HOSECLAMP	AI1018-00
T	1	#6 HOSECLAMP	AG1013-00
U	1	#88 HOSECLAMP	AG1011-00
V	5	LID SCREW	AI2005-00
W	5	LID WASHER	AI2006-00
X	1	BOX PLUG	AI2052C-00
Y	1	CLEAR LID	AI2054-00
Z	1	LID SEAL	AI1766-05
ITEMS NOT SHOWN IN THE EXPLODED VIEW			
AA	1	THREAD LOCKER	AI1595-00

HARDWARE PACKS
HP1541-00
AG1019-00
AG1018-00
AI1038-01
HP1407-00
AI1837-00
AI1822-00
AI1823-00
HP1543-00
AI1110-00
AG1013-00
AI1593-00
AI1594-00
HP1544-00
AI2051-00
AI1563-00
AI1257-00
AI1535-00
AI1595-00
LHP0006-00
AI2005-00
AI2006-00
HP1542-00
AI2054-00
AI1766-05

AM0371-00 REV-E 08/16/2018

## INSTALLATION STEPS:

- 1** With the ignition switched off and the parking brake set, disconnect the negative battery cable on the passenger side then remove the engine cover. **Note: Failure to disconnect the battery may cause the CEL to illuminate upon completion of the installation and subsequent operation. Do not skip this step!**  
**Tool Required:** 10mm Socket/Wrench



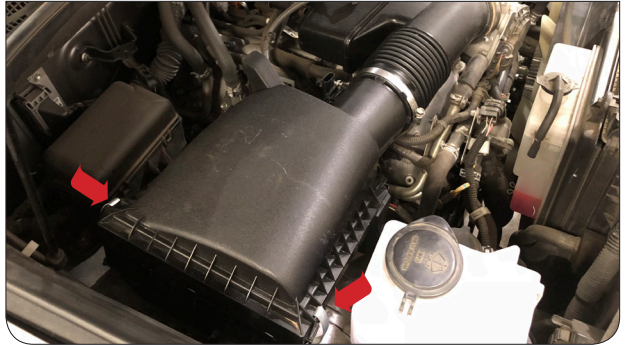
- 2** Disconnect MAF sensor and vacuum lines from the stock intake tube.



- 3** Loosen hose clamp on the intake tube at the throttle body.  
**Tool Required:** 10mm Socket/Wrench



- 4** Un-latch clips on the airbox and remove intake tube assembly and stock air filter from the vehicle.



- 5** Loosen the two bolts securing the airbox and remove airbox from the vehicle.  
**Tool Required:** 10mm Socket/Wrench



- 6** Remove MAF sensor from stock intake tube  
**Tool Required:** Phillips Screwdriver



**7** Install MAF Sensor, Plate (M), and Gasket (L) onto Intake Tube (N) with provided Hardware (P).  
**Tool Required:** Phillips Screwdriver



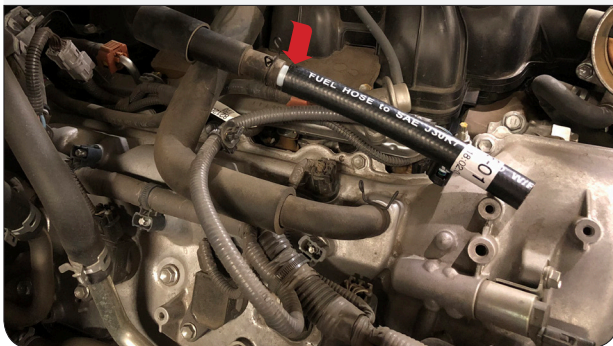
**8** Install Grommet (D) and Hose Adapter (J) into Intake Tube (N). The large side of the adapter goes into the intake tube grommet.



**9** Install Hose Adapter (G) into Hose (F).




**10** Install assembled Hose (F) into stock vacuum hose.



**11** Install Grommets (I) into two holes on the bottom of Airbox (A).



**12** Install M6 Bolt (Q), Washer (H), and Spacer (K) into the remaining hole in the bottom of the Air Box (A) then apply Thread Locker (AA) to the threads on the bolt. 



## INSTALLATION STEPS:

- 13** Install Tube Seal (O) onto Air Box (A).



- 14** Install Fender Seal (C) onto Air Box (A).



- 15** (Optional): Determine if you want to install the Box Plug (X) onto the Air Box (A). See the "Intake Box Plug" note on Page 2 to decide the desired setup. Leave Box Plug uninstalled for maximum airflow.



- 16** Install Airbox (A) into the vehicle. Apply Threadlocker (AA) to the threads on the remaining two M6 Bolts (Q). Tighten the bolts with Washers (H). **Note:** Do not fully tighten the bolt. The washer will begin to pull through the grommet if overtighten. Applying the threadlocker will prevent the bolts from backing out. **Tool Required:** 10mm Socket/Wrench



- 17** Install Coupler (E) onto throttle body using Hoseclamp (R). Tighten the Hoseclamp.



- 18a** Install Intake Tube (N) by first feeding the intake tube from inside of the airbox to the throttle body and tighten Hoseclamp (S).





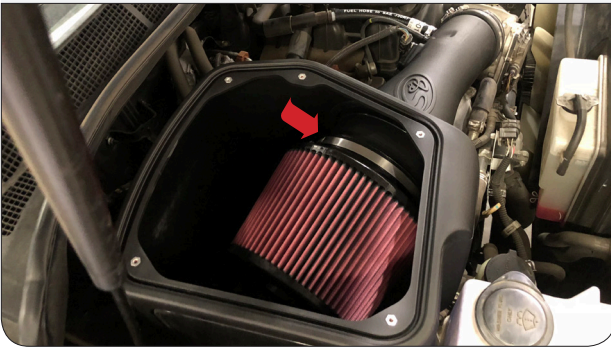
## 18b ...continued from Step 18a



**19** Secure vacuum hoses onto Intake Tube (N) and tighten Hosclamp (T) for Hose (F) and pushing the smaller hose onto Hose Adapter (J). Ensure Adapter (J) is properly seated in Tube Grommet (D). Reconnect MAF sensor harness to MAF sensor.



**20** Install Filter (B) onto Intake Tube (N) and tighten the Hoseclamp (U).  
**Tool Required:** 8mm Socket/Wrench



**21** Install Lid Seal (Z) into Airbox (A).



**22** Remove all protective film from Clear Lid (Y).



**23** Instal Clear Lid (Y) with Lid Washers (W) and Lid Screws (V).  
**Tool Required:** Phillips Screwdriver



## INSTALLATION STEPS:

- 24** Reconnect negative battery terminal.  
**Tool Required:** 10mm Socket/Wrench



- 25** Reinstall the stock engine cover.



- 26** Inspect your installation, make sure the kit is properly positioned and all fasteners are secure. Keep all stock parts in case you would ever need to reinstall the stock intake assembly. Affix the ID label near the intake kit. The installation is now complete.



## RELATED ITEMS FOR YOUR PURCHASE

Order Online today at [www.sbfilters.com](http://www.sbfilters.com) or through your local S&B distributor.



**Filter Wrap**  
SKU# WF-1034



**Replacement  
Cotton Filter**  
SKU# KF-1056



**Replacement  
Dry Filter**  
SKU# KF-1056D



**Precision II:  
Cleaning & Oil Kit**  
SKU# 88-0008