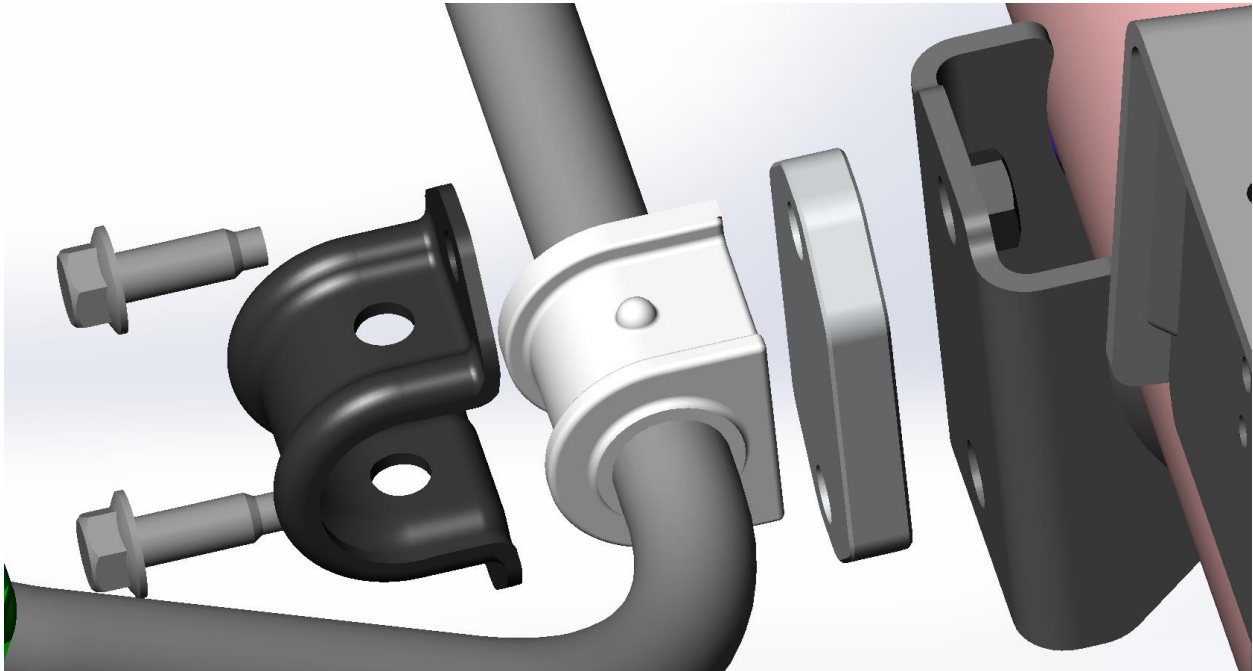




**DOWNLOAD THE LATEST
INSTALL MANUALS AT
www.bddiesel.com**





DODGE REAR SWAY BAR SPACER

PLEASE READ ALL INSTRUCTIONS BEFORE INSTALLATION

KIT CONTENTS:

Please check to make sure that you have all the parts listed in this kit **before** you start the disassembly of your truck.

1601836	FT-11115682
	
Spacer	Mounting Bolt
Qty: 2	Qty: 4

This aluminum spacer when installed will allow sufficient clearance between the #1601825 Differential Cover and the rear sway bar.

1. Position vehicle on a hoist on neutral position.

2. Remove rear sway bar bushing retainer bolts (2).
3. Remove the Bushing retainer (3)
4. Remove the sway bar (1).

Caution some parts maybe loaded and can shift when removing.

5. Install the stabilizer bar (1) to the vehicle by placing spacer (4) and install the bushing retainer (3) to the axle. Tighten the bolts (2) to 135 Nm (100 ftlbs). Repeat process for both passenger and driver side.

